

TRBOnet Enterprise/PLUS

Capacity Plus (Capacity Plus Single Site)

Deployment Guide

Last revised on 30 April 2025

USA Office

Neocom Software
150 South Pine Island Rd., Suite 300
Plantation, FL 33324, USA

Sales

EMEA: +44 203 608 0598
Americas: +1 872 222 8726
APAC: +61 28 607 8325

www.trbonet.com
info@trbonet.com

Contents

1	Introduction	2
1.1	About This Document	2
1.2	About TRBOnet.....	2
1.3	Contacts.....	2
2	System Components and Terms	3
2.1	TRBOnet Software	3
2.2	IP Connection (Wireline Connection)	3
2.3	Wireless Connection (Control Stations)	3
3	System Topology	4
3.1	Capacity Plus without NAI	4
3.2	Capacity Plus with NAI	8
4	Configuring MOTOTRBO Equipment.....	11
4.1	Configuring a Repeater	11
4.2	Configuring a Control Station	16
4.3	Configuring a Subscriber Radio	26
4.4	Configuring MOTOTRBO DDMS.....	36
4.5	Configuring MOTOTRBO MNIS	38
5	Configuring TRBOnet Enterprise	43
5.1	Configuring TRBOnet Server	43
5.2	Configuring TRBOnet Dispatch Console	58

1 Introduction

1.1 About This Document

The information in this guide is intended for administrators setting up evaluation and proof-of-concept deployments of MOTOTRBO Dispatch over IP solutions. The document describes the steps required to configure communication with a MOTOTRBO Capacity Plus system.

For more comprehensive information on the Neocom TRBOnet family of radio network software tools, refer to the [Documentation section](#) of our web site.

1.2 About TRBOnet

TRBOnet is a suite of professional applications for MOTOTRBO digital two-way radio networks. TRBOnet manages voice and data communication paths across network endpoints. It provides a unified graphical dispatcher workbench interface for the entire range of workforce fleet management tasks.

1.3 Contacts

Region	Phone	Email & Support
EMEA	+44 203 608 0598	info@trbonet.com — general and commercial inquiries
Americas	+1 872 222 8726	support@trbonet.com — technical support
APAC	+61 28 607 8325	https://trbonet.com/kb/ — online knowledge base

2 System Components and Terms

2.1 TRBOnet Software

The TRBOnet software consists of several modules, a combination of which enables you to build enterprise dispatch solutions of different levels of complexity and redundancy. The first step in implementing the best solution is determining the topology for the customer's system; then identifying the combination of modules to implement the best customer solution.

2.2 IP Connection (Wireline Connection)

TRBOnet Server can be connected to a two-way radio system via an IP connection creating a direct communications path for all voice and data information between them. The topologies can be in the form of a LAN, WAN, or VLAN and/or any combination thereof.

2.3 Wireless Connection (Control Stations)

If TRBOnet Server doesn't have an IP connection to the radio system, it can be connected via control stations (also known as control radios or donor radios). The number of control stations depends on how many talk groups and revert channels are registered in your system.

3 System Topology

Capacity Plus (also known as Capacity Plus Single Site) is a digital trunked two-way MOTOTRBO system that allows you to accommodate high volume communication. It is designed to provide a stable connection between a few groups within one building or a set of buildings. This system type allows you to increase the number of channels for voice and data transmission between the radio units and control centers. The radio units are always automatically forwarded to a free channel. The main objective of a Capacity Plus system is to support more simultaneous voice and data transmissions within one capacious system.

Also note that, according to the Motorola MOTOTRBO System Planner, if two or more repeaters are used in a Capacity Plus system, these repeaters must reside on the same LAN behind a router. In addition, the PC with TRBOnet Server must not reside on the same LAN with the repeaters.

3.1 Capacity Plus without NAI

3.1.1 System with Trunked Control Stations

TRBOnet Server can be connected to a Capacity Plus system using one or more Trunked Control Stations. The number of Trunked Control Stations depends on how many talk groups are registered in your system. To make a call to a talk group, the dispatcher uses the Trunked Control Station associated with the group.

Note: It is reasonable that the number of Trunked Control Stations shouldn't be greater than the total number of repeaters slots.

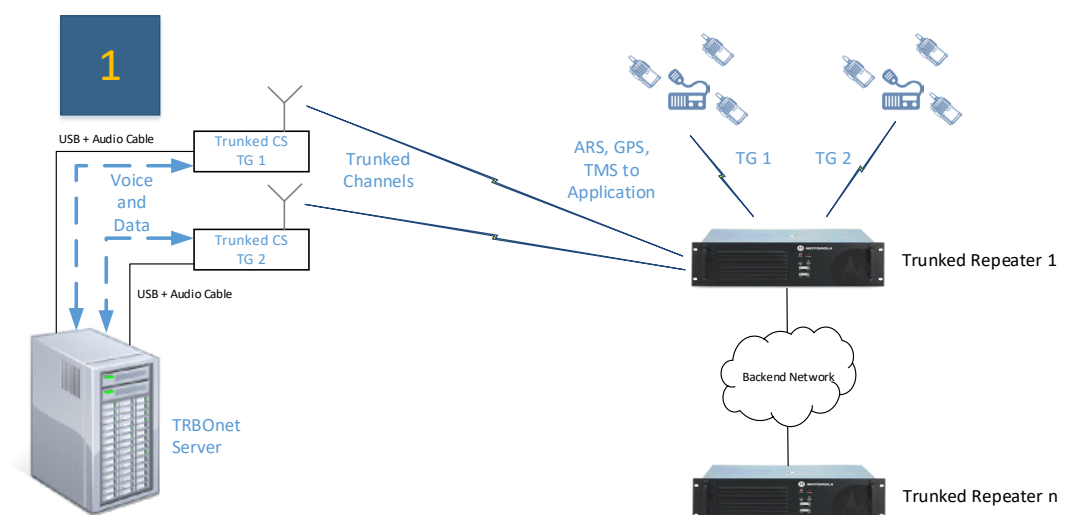


Figure 1: System with Trunked Control Stations

3.1.2 System with Trunked Control Stations and Revert Control Stations

For a higher data throughput, the preferred configuration is to have channels dedicated for data only. Such channels are defined as Data Revert Channels. If Data Revert Repeaters are present in the system, then one Revert Control Station is required per Data Revert Slot.

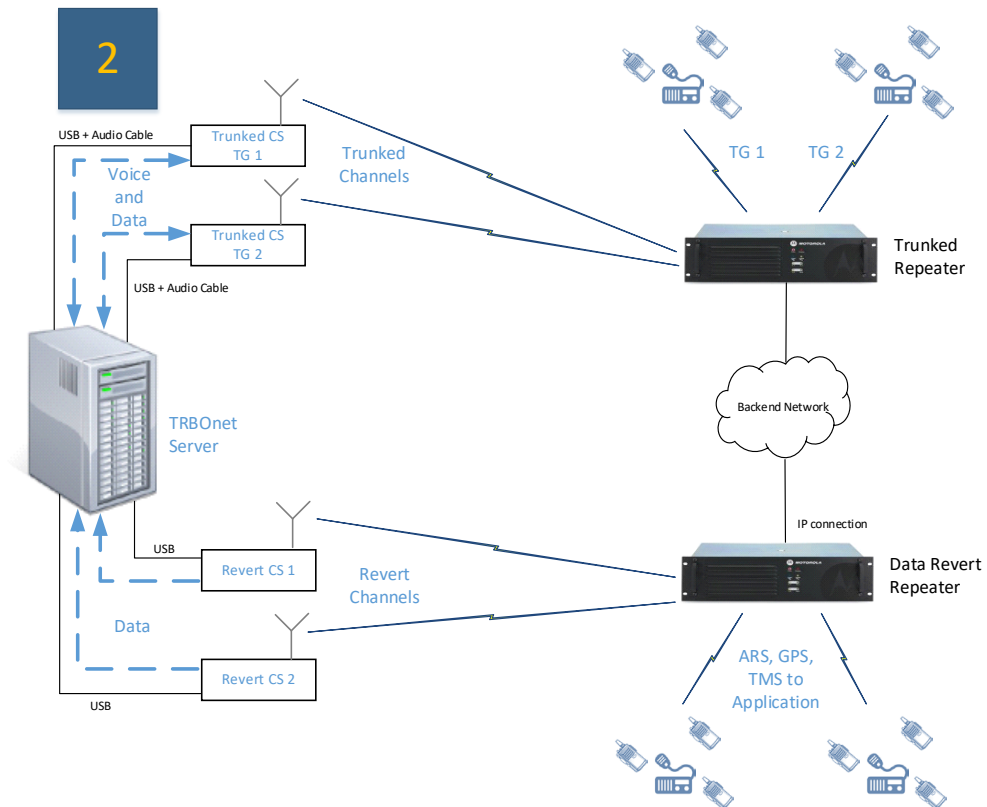


Figure 2: System with Trunked Control Stations and Revert Control Stations

3.1.3 System with Data Revert Repeaters having IP Connection

In this configuration, TRBOnet Server has an IP connection to Data Revert Repeaters to receive data from, and Trunked Control Stations associated with the talk groups.

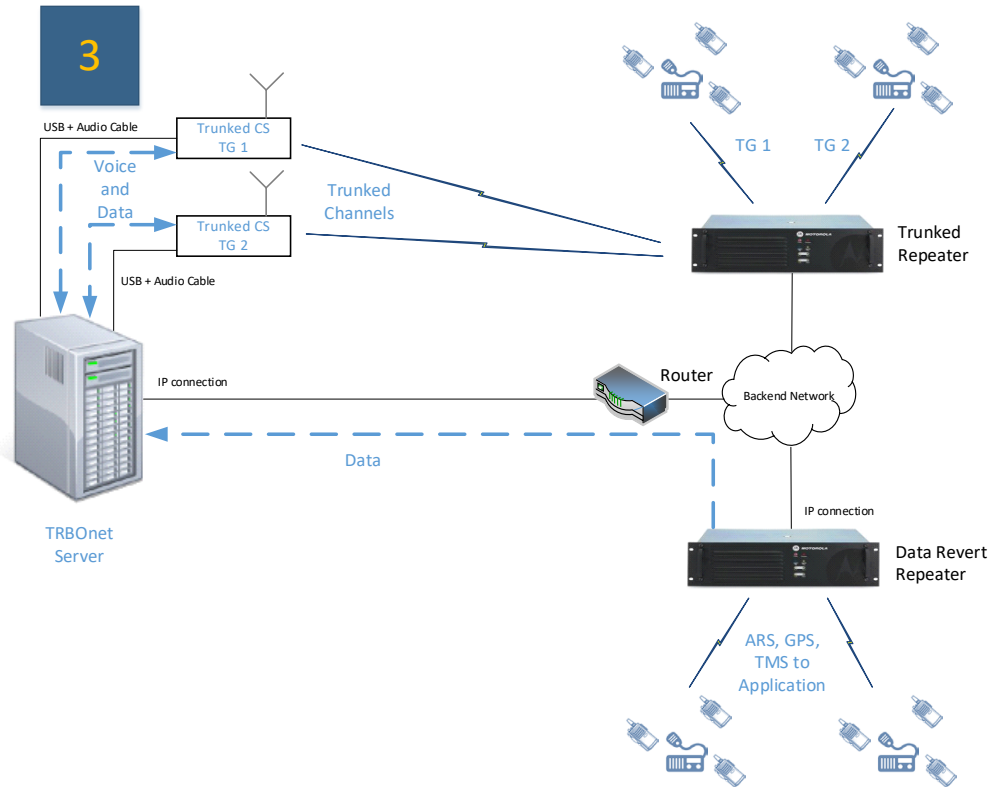


Figure 3: System with Data Revert Repeaters having IP Connection

3.1.4 System with Trunked and Data Repeaters having IP Connection

In this configuration, TRBOnet Server has an IP connection to Data Revert Repeaters as well as to Trunked Repeaters. To transmit voice and data from TRBOnet Server to radios, a Control Station shared by all talk groups can be used. Note that in this case only one radio call is possible at a time.

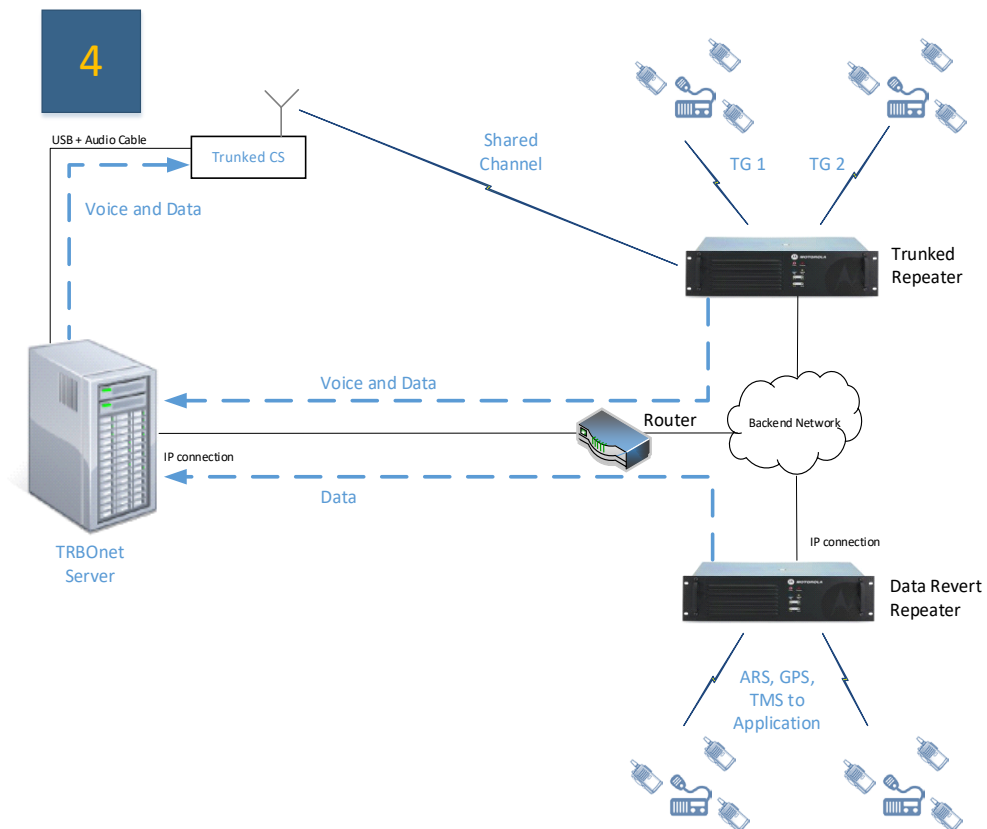


Figure 4: System with Trunked and Data Repeaters having IP Connection

3.2.2 System with NAI Data and Shared Control Station

Analogously to the previous configuration, Trunk Repeaters and Data Revert Repeaters have IP connection to TRBOnet Server, as well as NAI Data protocol is used on Data Revert repeaters and Trunked repeaters. Unlike the previous configuration, to transmit voice from TRBOnet Server to radios, a Control Station shared by all talk groups is used. Note that in this case only one radio call is possible at a time.

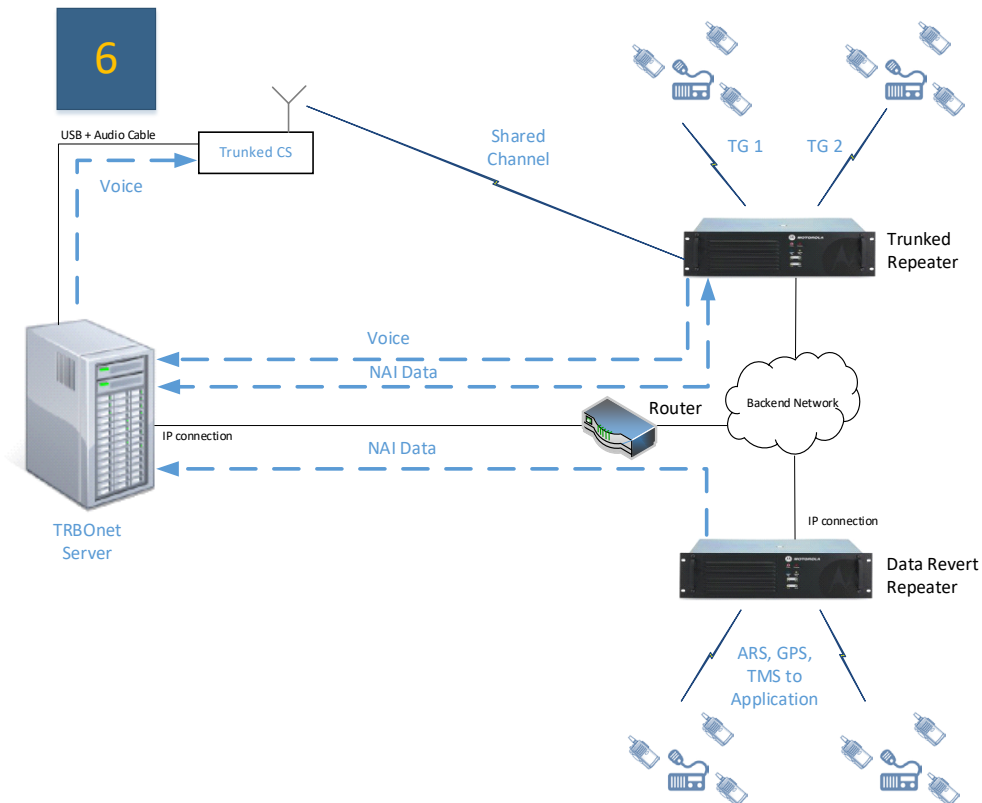


Figure 6: System with NAI Data and Shared Control Station

3.2.3 System with NAI Data and NAI Voice

This is the most advanced configuration using the power of NAI Data and NAI Voice protocols. All voice and data will be received and transmitted over an IP connection, that is, no Control Stations are required. Note that TRBOnet PLUS is required to utilize this system topology.

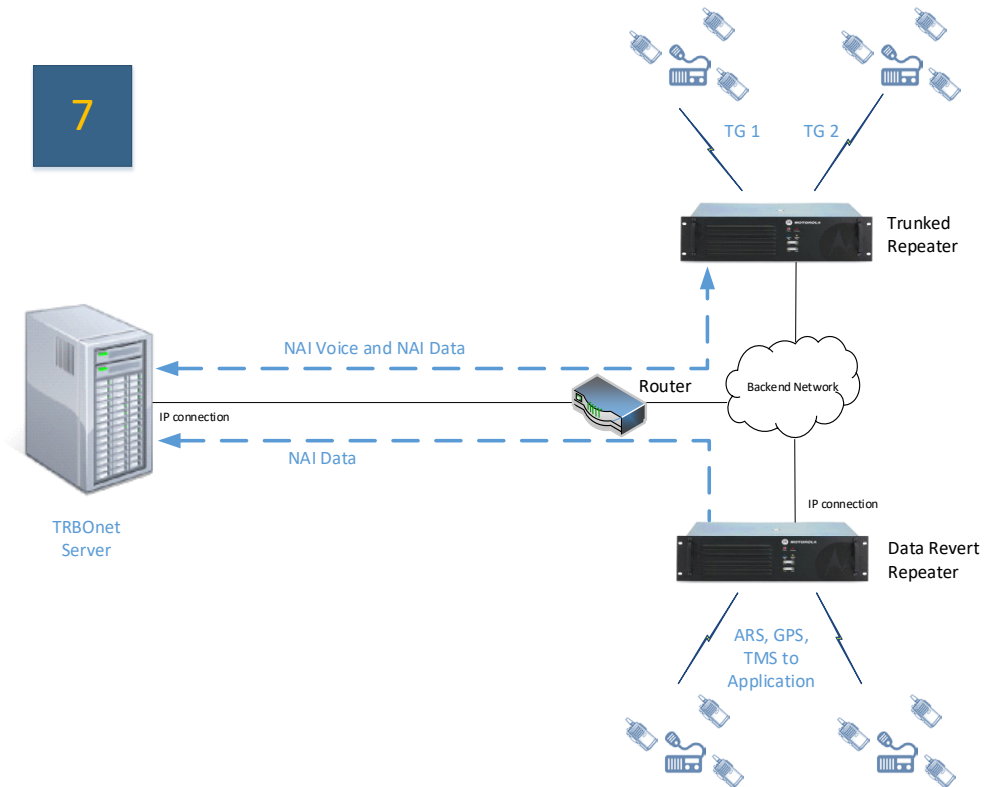


Figure 7: System with NAI Data and NAI Voice

4 Configuring MOTOTRBO Equipment

This section describes how to configure MOTOTRBO equipment, such as repeaters, control stations and subscriber radios, using MOTOTRBO Customer Programming Software (CPS).

- Launch MOTOTRBO CPS.
- On the menu bar, select **View > Expert**.

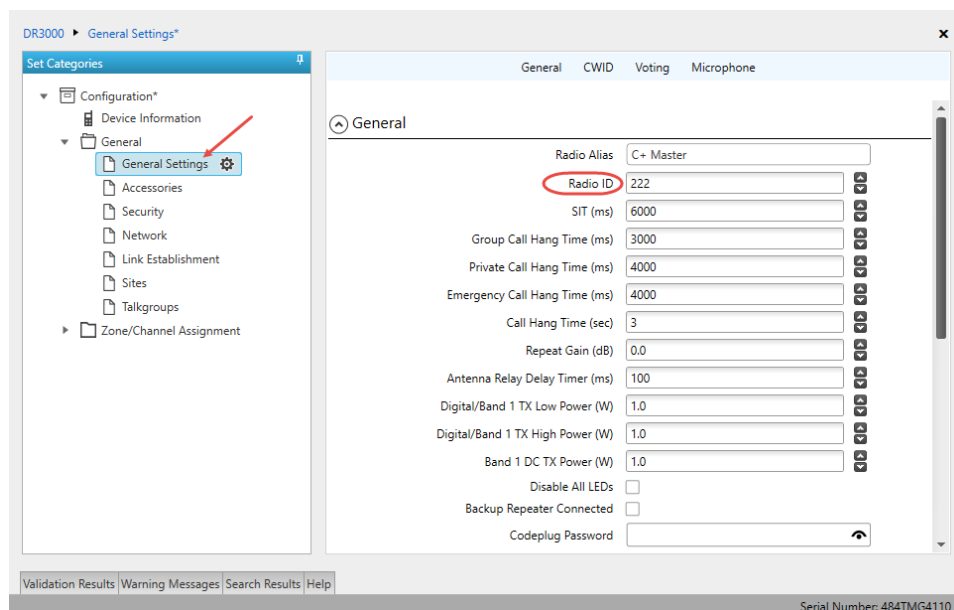
4.1 Configuring a Repeater

This section describes how to configure a repeater to be used in a Capacity Plus system.

- Connect your repeater to the PC via a programming cable (USB).
- Click the **Read** button on the toolbar.

4.1.1 General Settings

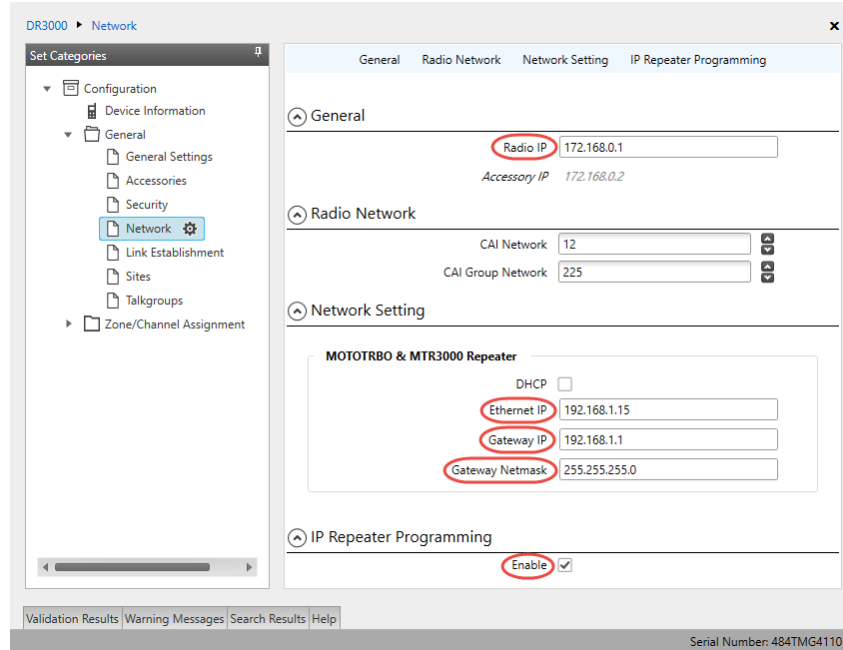
- In the **Set Categories** pane, select **General > General Settings**.



- In the right pane, specify the **Radio ID** of the repeater. This must be a unique Peer ID among the repeaters in a radio system and also not in conflict with any other third-party application Peer ID. The recommended range is from 1 to 255.

4.1.2 Network

- In the **Set Categories** pane, select **General > Network**.



- In the right pane, specify the following parameters:
 - **Radio IP**
This is the IP address used by the radio to communicate with a PC (using USB connection) and has to be unique. To avoid conflicts in case there are several stations connected with USB, you can change the third octet of the address.

Network Setting

If your radio system is on a Private Network, specify the following network parameters:

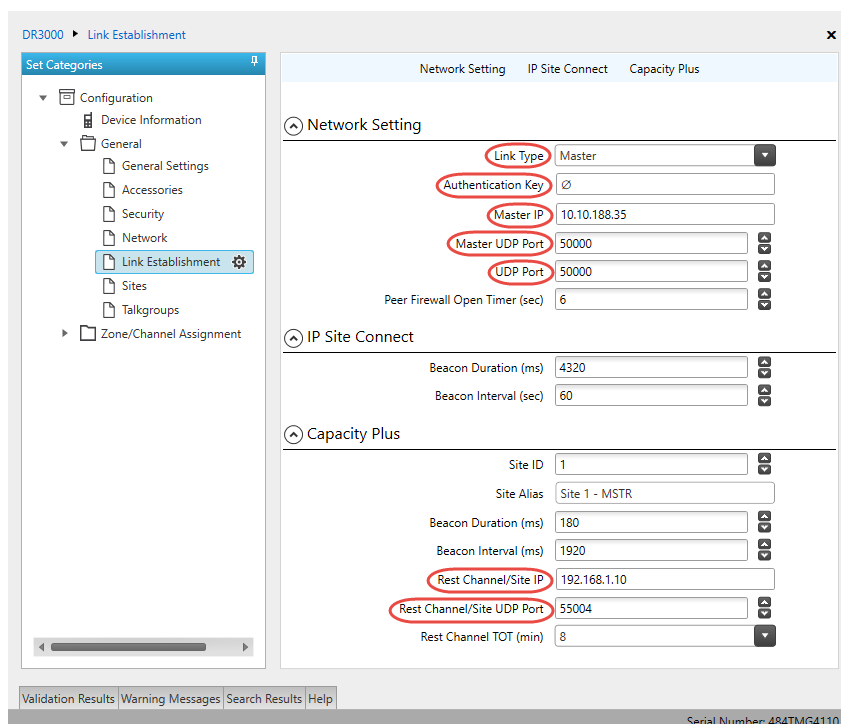
- **Ethernet IP**
This is the LAN address of the repeater that can be obtained from your network details; the last octet of the IP address must be unique for the system's local network.
- **Gateway IP**
This is the address of an upstream system (router). If a router exists, specify its LAN address here.
- **Gateway Netmask**
Set the Subnet Mask, for example, 255.255.255.0 or 255.255.0.0 depending on the subnet.

IP Repeater Programming

- **Enable**
Select this checkbox to provide the ability to remotely program the repeater.

4.1.3 Link Establishment

- In the **Set Categories** pane, select **General > Link Establishment**.



- In the right pane, specify the following parameters:
 - Link Type**
From the drop-down list, select **Master** if you are configuring a master repeater, or **Peer** if you are configuring a peer repeater.
 - Authentication Key**
Specify the authentication key that can optionally be used to access the repeater.
 - Master IP**
 - Enter the WAN IP address of the site router if you are configuring a master repeater, or the LAN IP address of the master repeater, if you are configuring a peer repeater and a NAT loopback is disabled on the router.
 - Enter the WAN IP address of the site router on all the repeaters, if a NAT loopback is enabled and the port forwarding rules are specified for all the repeaters and the rest channel on the site router.

Note: In all the cases, the port forwarding rules must be specified for both the master repeater and the rest channel on the site router.

- Master UDP Port**
Enter the UDP port number of the master repeater.

- **UDP Port**

Enter the UDP port number of this repeater. If you are configuring a master repeater, set this value the same as that for **Master UDP Port**.

- **Rest Channel/Site IP**

This is a private network IP address that is required for correct operation of a Capacity Plus system. This IP address **MUST** be the same for all repeaters.

- **Rest Channel/Site UDP Port**

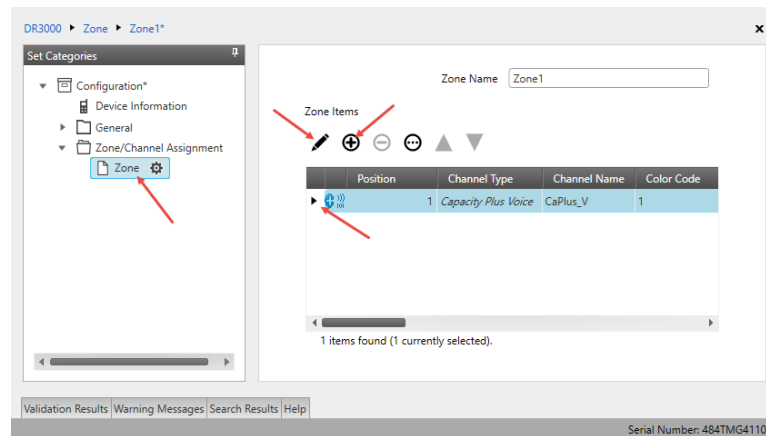
This is the UDP port of the Repeater's rest channel. This UDP port **MUST** be the same for all repeaters.

4.1.4 Capacity Plus Channel

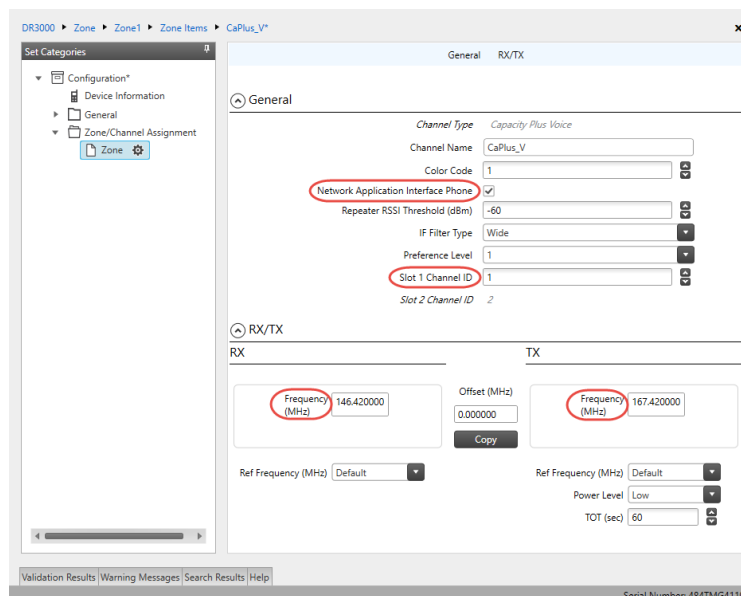
Depending on its role in a Capacity Plus system (Trunked or Data Revert Repeater), the repeater can be configured either with a Voice Channel or with a Data Channel, respectively.

4.1.4.1 Adding a Voice Channel

- In the **Set Categories** pane, select **Zone/Channel Assignment > Zone**.
- In the right pane, click the plus sign button and then choose **Type: Capacity Plus Voice**.
- In the right pane, select the channel you have added (for example, CaPlus_V) and click the pencil button.



- In the right pane, specify the following channel-related parameters:



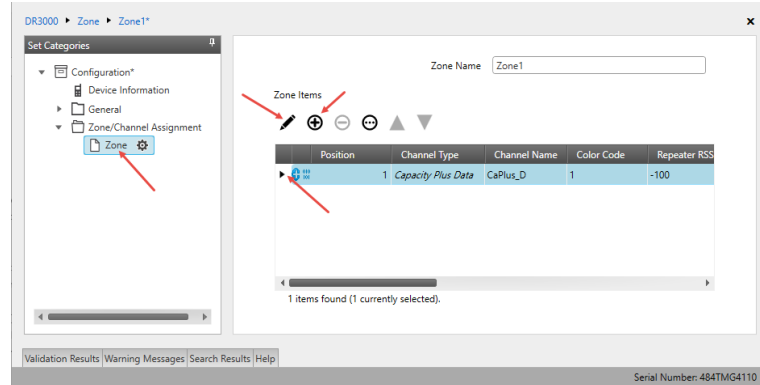
- **Network Application Interface Phone**
Select this option to support the telephone calls over the repeater's NAI interface.
- **Slot 1 Channel ID**
Specify the Channel ID of Slot 1 for voice channels. This also determines the value for **Slot 2 Channel ID** which is always one increment higher than the value of Slot 1 Channel ID.

Note: The Slot IDs of the repeater must not match with the Slot IDs of other repeaters within a single Capacity Plus system.

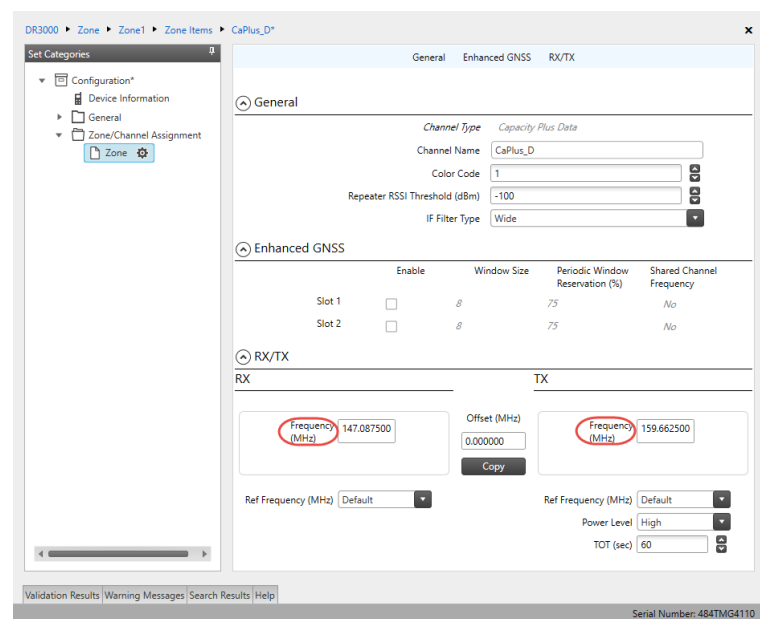
- In the **RX Frequency** box, enter the radio frequency the repeater will receive on.
- In the **TX Frequency** box, enter the radio frequency the repeater will transmit on.

4.1.4.2 Adding a Data Channel

- In the **Set Categories** pane, select **Zone/Channel Assignment > Zone**.
- In the right pane, click the plus sign button and then choose **Type: Capacity Plus Data**.
- In the right pane, select the channel you have added (for example, CaPlus_D) and click the pencil button.



- In the right pane, specify the following parameters:



- In the **RX Frequency** box, enter the radio frequency the repeater will receive on.
- In the **TX Frequency** box, enter the radio frequency the repeater will transmit on.
- Once you have finished configuring the desired repeater parameters, click the **Write** button on the toolbar.

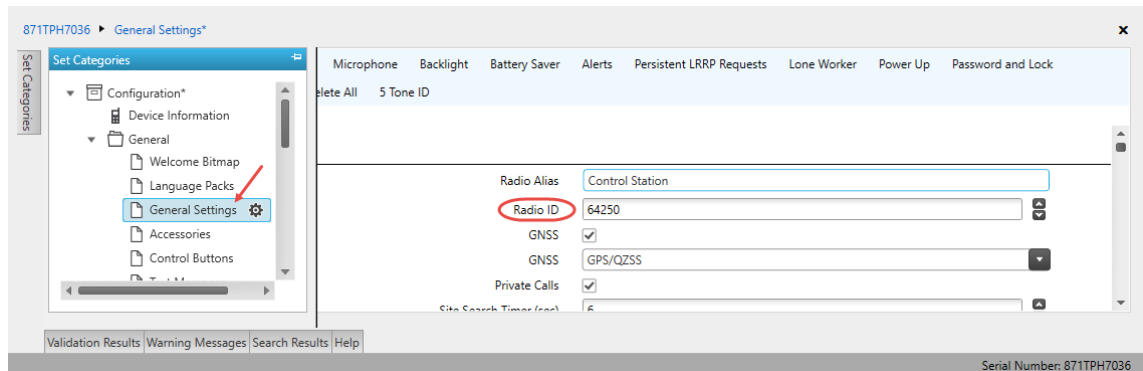
4.2 Configuring a Control Station

This section describes how to configure the radio to be used as a control station in a Capacity Plus system. Control stations are used in the topologies depicted in Figures 1-6.

- Connect your radio to the PC via a programming cable.
- Turn on the radio.
- Click the **Read** button on the toolbar.

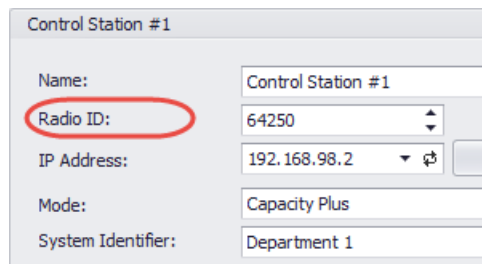
4.2.1 General Settings

- In the **Set Categories** pane, select **General > General Settings**.



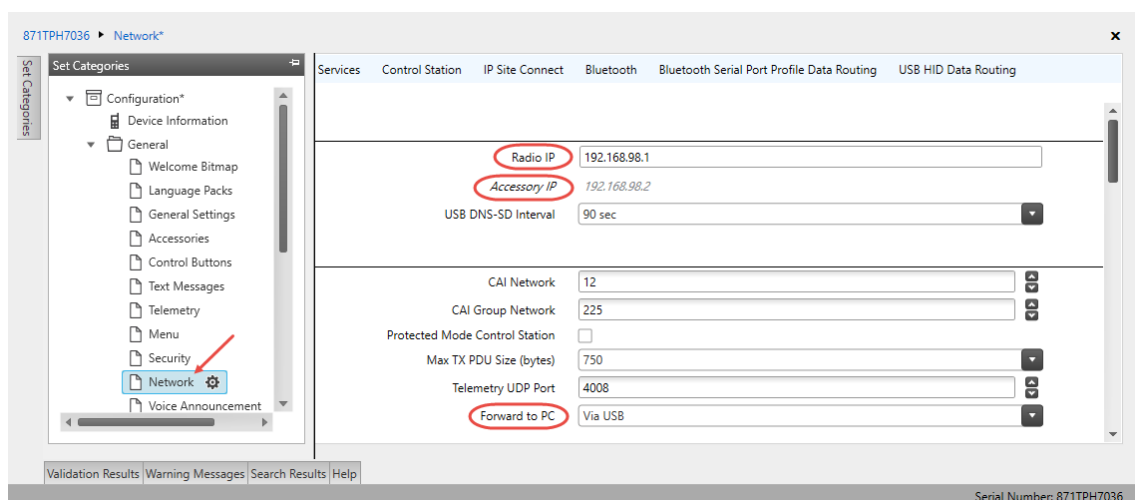
- In the right pane, specify the following:
 - Radio ID**
Enter the Radio ID of the control station. The default value is **64250**.

Note: This value will then be used as the control station's **Radio ID** when connecting a control station to the TRBOnet Server. See section [5.1.2, Adding a Control Station](#).



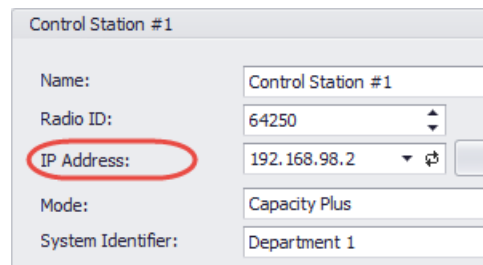
4.2.2 Network

- In the **Set Categories** pane, select **General > Network**.



- In the **Network** pane, specify the following parameters:
 - **Radio IP**
This is the IP address used by the radio to communicate with the PC (using the USB connection) and has to be unique. To avoid conflicts in case there are several stations connected with USB, you can change the third octet of the address.
 - **Accessory IP**
This is the IP address that is given to the PC by the radio that is connected to it.

Note: This value will then be used as the control station's **IP Address** when connecting a control station to the TRBOnet Server. See section [5.1.2, Adding a Control Station](#).



Control Station #1

Name: Control Station #1

Radio ID: 64250

IP Address: 192.168.98.2

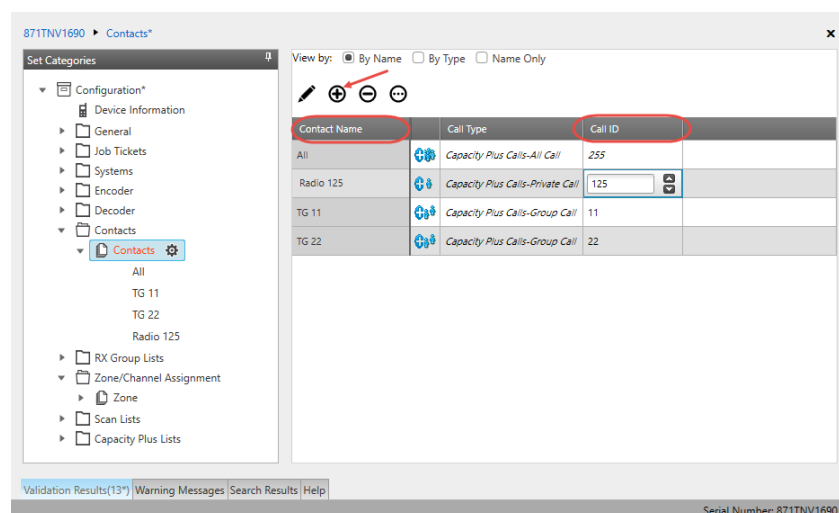
Mode: Capacity Plus

System Identifier: Department 1

- **Forward to PC**
From the drop-down list, select **Via USB**.

4.2.3 Contacts

- In the **Set Categories** pane, select **Contacts > Contacts**.
- In the right pane, click the plus sign button, then click **Capacity Plus** and choose the call type.



871TNV1690 - Contacts*

Set Categories

- Configuration*
 - Device Information
 - General
 - Job Tickets
 - Systems
 - Encoder
 - Decoder
 - Contacts
 - Contacts** (selected)
 - All
 - TG 11
 - TG 22
 - Radio 125
 - RX Group Lists
 - Zone/Channel Assignment
 - Zone
 - Scan Lists
 - Capacity Plus Lists

View by: ☒ By Name ☐ By Type ☐ Name Only

Contact Name	Call Type	Call ID
All	Capacity Plus Calls-All Call	255
Radio 125	Capacity Plus Calls-Private Call	125
TG 11	Capacity Plus Calls-Group Call	11
TG 22	Capacity Plus Calls-Group Call	22

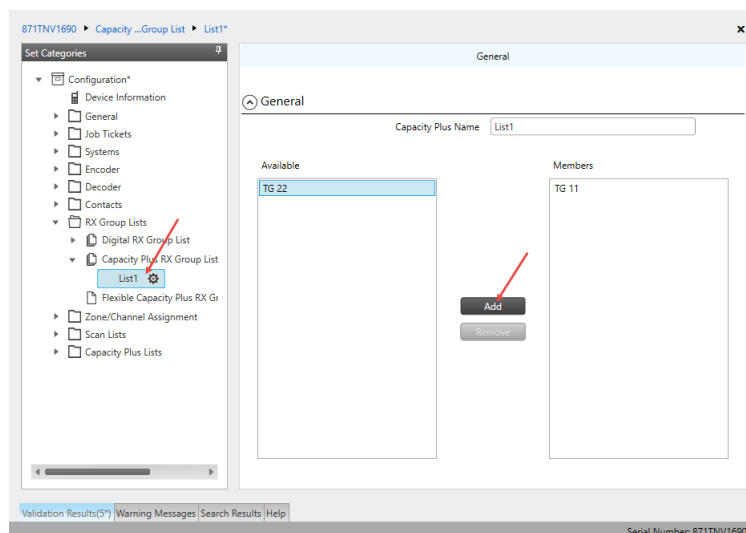
Validation Results(13*) | Warning Messages | Search Results | Help

Serial Number: 871TNV1690

- Enter the **Contact Name** and **Call ID** for the contacts you have added.

4.2.4 RX Group Lists

- In the **Set Categories** pane, select **RX Group Lists > Capacity Plus RX Group List**.
- In the right pane, click the plus sign button and add the corresponding group list.



- In the left pane, select the group you have added.
- In the right pane, in the **Available** list select a group, or multiple groups using the SHIFT key, and click the **Add** button.

As a result, the group(s) will appear in the **Members** list.

4.2.5 Channel

4.2.5.1 Important Notes

Depending on its role in a Capacity Plus system ([Trunked Control Station](#) or [Data Revert Control Station](#)), the control station can be configured either with a Capacity Plus Personality Channel or with a Digital Channel, respectively.

When using the configurations depicted on figures 1, 3, 4, 5, and 6, you are employing a Capacity Plus Personality Channel.

In the configuration depicted in fig. 2, that is a configuration with the data revert repeater, you will need to use a Digital Channel. The fact is that there are no rest channels on a data revert repeater. Thus, to send data to TRBOnet Server, the subscriber radios will use a data revert channel. In this case, you'll have to forcibly set the control station to the corresponding frequencies of the data revert repeater.

A single data revert control station may receive data from only one data revert slot. If there is only one data revert control station in the radio system, then all subscribers must send data only to the slot with which this control station operates. The Radio ID of this data revert control station must match the Radio ID of at least one voice control station. If the system has several data revert

control stations, their Radio ID's be the same and match at least one voice control station.

Also note that the system identifier in TRBOnet Server should be the same for all control stations and repeaters used in the same radio system.

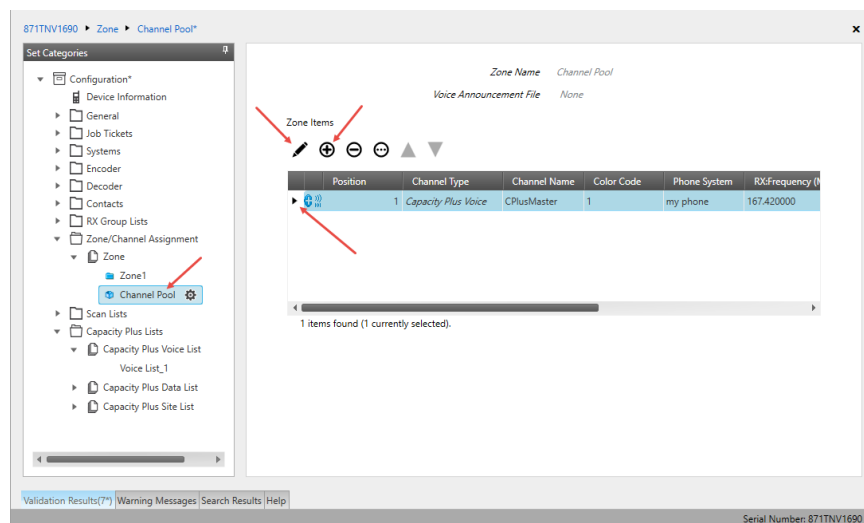
4.2.5.2 Trunked Control Station

This section describes how to configure channels on a trunked control station.

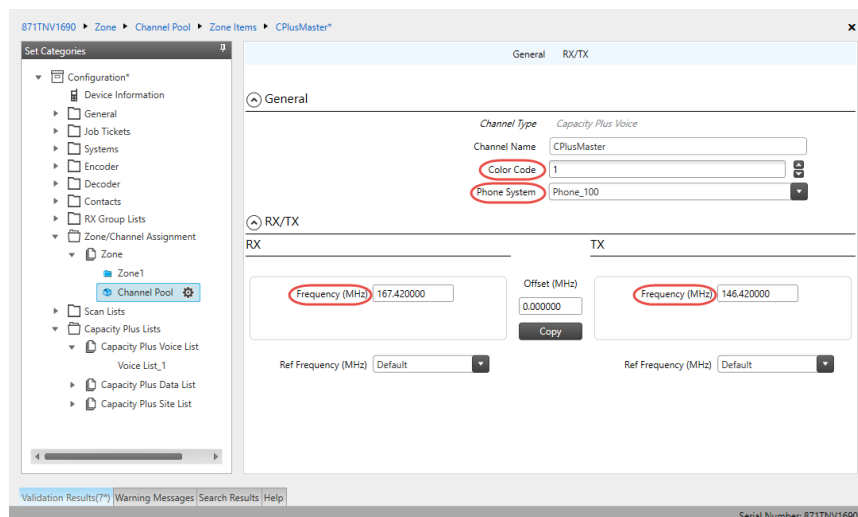
Adding Channels to Channel Pool

The Channel Pool is used for organizing channels in the radio that are not tied to a channel selector position. The Channel Pool is not visible when the radio user navigates through the zones.

- In the **Set Categories** pane, select **Zone/Channel Assignment > Zone > Channel Pool**.
- In the right pane, click the plus sign button and then choose **Type: Capacity Plus Voice**.
- In the right pane, select the channel you have added (for example, CPlusMaster) and click the pencil button.



- In the right pane, specify the following parameters:



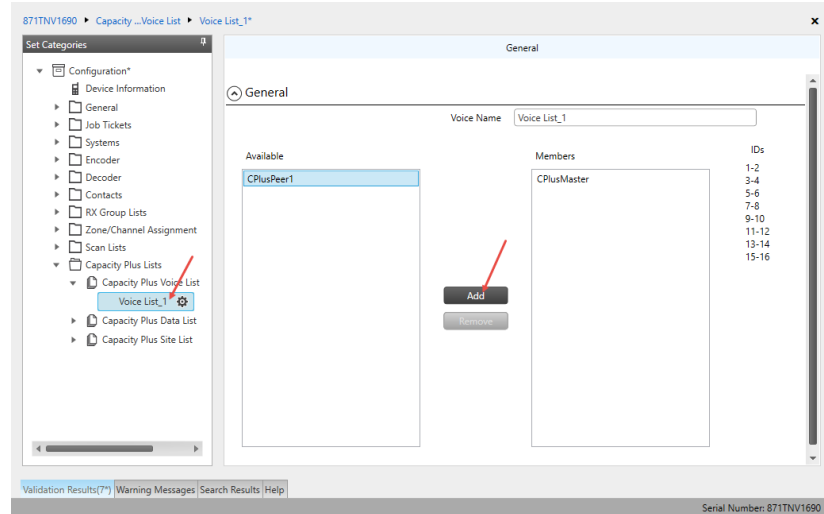
- **Color Code**
Enter the color code for the radio. Note that the color codes on the radios must match the color code of the repeater.
- **Phone System**
Select the phone system you have specified in section [4.3.6, Phone System](#).
- In the **RX Frequency** box, specify the radio frequency the radio will receive on.
- In the **TX Frequency** box, specify the radio frequency the radio will transmit on.

Note: The RX and TX frequencies of the radio must be the opposite to the RX and TX frequencies of the repeater. In other words, the RX frequency of the repeater must be the same as the TX frequency of the radio; the TX frequency of the repeater must be the same as the RX frequency of the radio.

Capacity Plus Voice List

This section describes how to add the channels contained in the Channels Pool to a Capacity Plus Voice List.

- In the **Set Categories** pane, select **Capacity Plus Lists> Capacity Plus Voice List**.
- In the right pane, click the plus sign button and add the corresponding voice list.

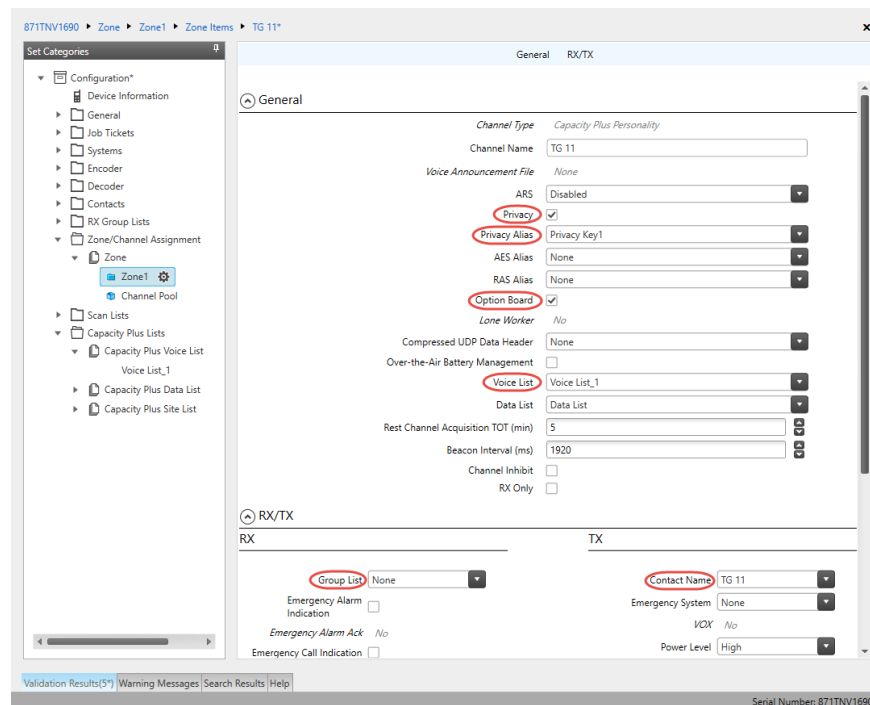
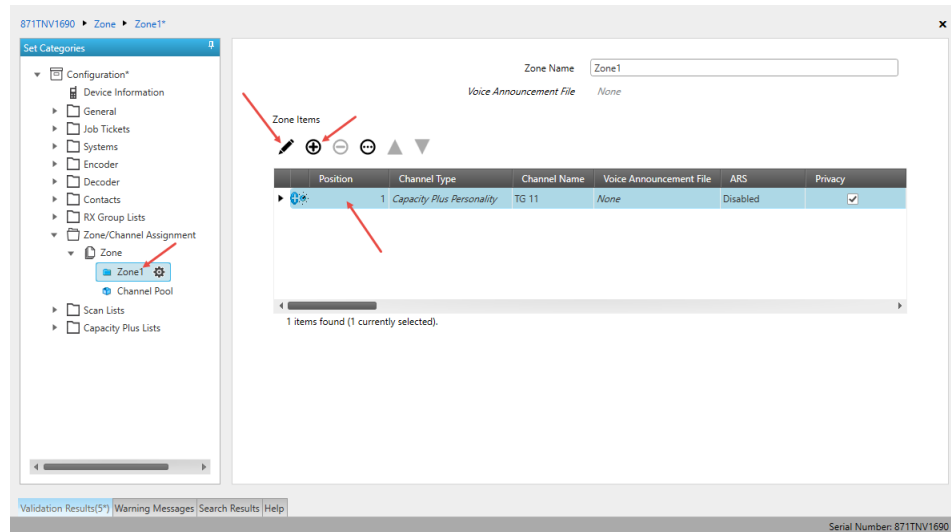


- In the left pane, select the voice list you have added.
 - In the right pane, in the **Available** list select a channel, or multiple channels using the SHIFT key, and click the **Add** button.
- As a result, the channel(s) will appear in the **Members** list.

Note: The order of the channels in the Members list must follow the order of their respective Slot IDs, for example 1-2, 3-4, and so on.

Adding a Capacity Plus Personality Channel

- In the **Set Categories** pane, select **Zone/Channel Assignment**.
- In the right pane, click the plus sign button to add a zone.
- In the **Set Categories** pane, select the zone you have added.
- In the right pane, click the plus sign button and then choose **Type: Capacity Plus Personality**.
- In the right pane, select the channel (for example, TG 11) you have added and click the pencil button.



- In the right pane, specify the following parameters:

- **Privacy**

Select this option to allow privacy on the channel.

Note: The **Privacy** option is available if the Basic or Enhanced Privacy Type has been selected in the Security section.

- **Privacy Alias**

From the drop-down list, select the Key Alias.

Note: The **Privacy Alias** option is available if the Enhanced Privacy Type has been selected in the Security section. The same Key Alias must be used on all system nodes (repeaters and radios).

- **Option Board**

Select this option to enable the option board capability on the channel. The option board must be installed and enabled in the radio otherwise this feature will not function.

- **Voice List**

Select the Capacity Plus Voice List you have specified in section [Capacity Plus Voice List](#).

- **RX Group List**

Select the Group list you have specified in section [4.2.4, RX Group Lists](#). If you select **None**, the radio will receive calls only from the group specified in the **TX Contact Name** box.

- **TX Contact Name**

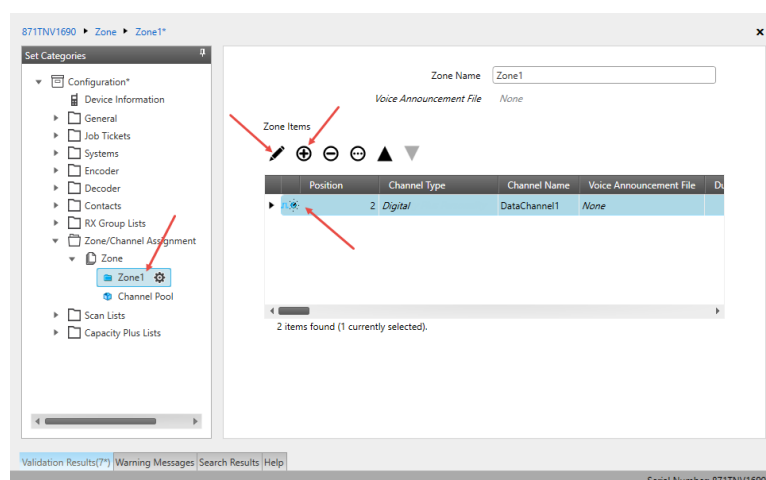
Select the contact to which a call will be initiated on the channel when pressing the PTT button. The contact is selected from the Contact list you have created in section [4.2.3, Contacts](#).

4.2.5.3 Data Revert Control Station

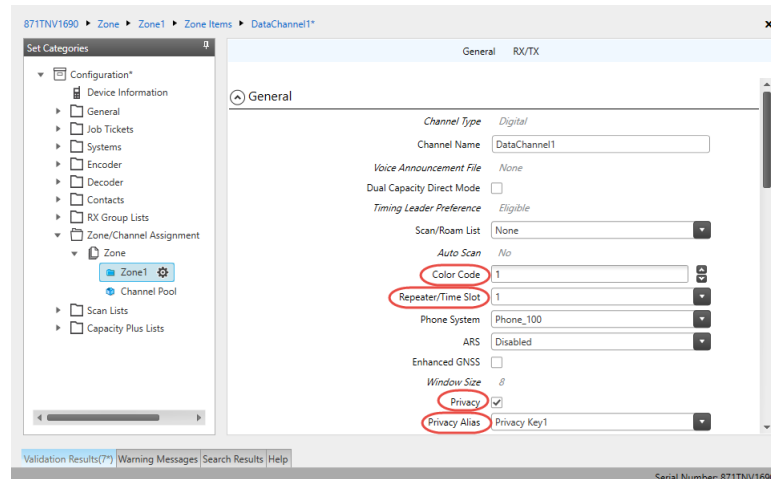
Adding a Digital Channel for Receiving Data

This section describes how to configure a data revert channel for receiving data on a control station (see also section [4.2.5.1, Important Note](#)).

- In the **Set Categories** pane, select **Zone/Channel Assignment > Zone > Zone1**.
- In the right pane, click the plus sign button and then choose **Type: Digital**.
- In the right pane, select the channel (for example, DataChannel1) you have added and click the pencil button.



- In the right pane, specify the following parameters:



871TNV1690 > Zone > Zone1 > Zone Items > DataChannel1*

Set Categories

- Configuration*
 - Device Information
 - General
 - Job Tickets
 - Systems
 - Encoder
 - Decoder
 - Contacts
 - RX Group Lists
 - Zone/Channel Assignment
 - Zone
 - Zone1** (selected)
 - Channel Pool
 - Scan Lists
 - Capacity Plus Lists

General RX/TX

Channel Type: Digital

Channel Name: DataChannel1

Voice Announcement File: None

Dual Capacity Direct Mode: ☐

Timing Leader Preference: Eligible

Scan/Roam List: None

Auto Scan: No

Color Code: 1

Repeater/Time Slot: 1

Phone System: Phone_100

ARS: Disabled

Enhanced GNSS: ☐

Window Size: 8

Privacy: ☒

Privacy Alias: Privacy Key1

Validation Results(?) Warning Messages Search Results Help

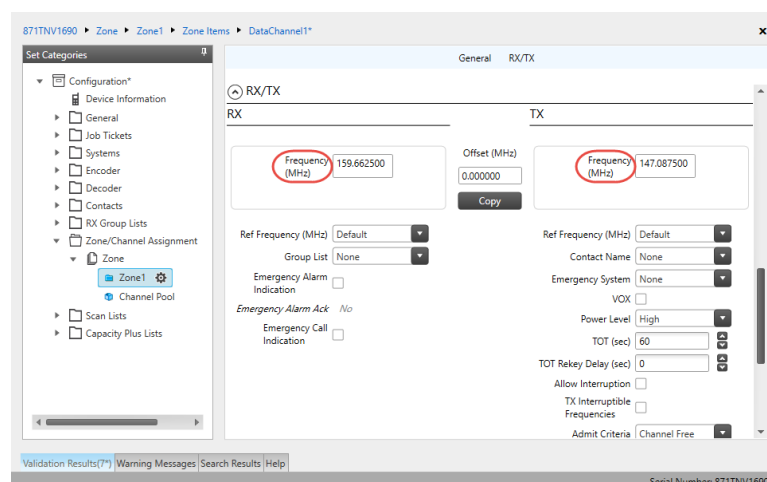
Serial Number: 871TNV1690

- **Color Code**
Enter the color code for the radio. Note that the color codes on the radios must match the color code of the data repeater.
- **Repeater/Time Slot**
Select one of the data repeater time slots.
- **Privacy**
Select this option to allow privacy on the channel.

Note: The **Privacy** option is available if the Basic or Enhanced Privacy Type has been selected in the Security section.

- **Privacy Alias**
From the drop-down list, select the Key Alias.

Note: The **Privacy Alias** option is available if the Enhanced Privacy Type has been selected in the Security section. The same Key Alias must be used on all system nodes (repeaters and radios).



871TNV1690 > Zone > Zone1 > Zone Items > DataChannel1*

Set Categories

- Configuration*
 - Device Information
 - General
 - Job Tickets
 - Systems
 - Encoder
 - Decoder
 - Contacts
 - RX Group Lists
 - Zone/Channel Assignment
 - Zone
 - Zone1** (selected)
 - Channel Pool
 - Scan Lists
 - Capacity Plus Lists

General RX/TX

RX TX

Frequency (MHz): 159.662500

Offset (MHz): 0.000000

Frequency (MHz): 147.087500

Copy

Ref Frequency (MHz): Default

Group List: None

Emergency Alarm Indication: ☐

Emergency Alarm Ack: No

Emergency Call Indication: ☐

Ref Frequency (MHz): Default

Contact Name: None

Emergency System: None

VOX: ☐

Power Level: High

TOT (sec): 60

TOT Rekey Delay (sec): 0

Allow Interruption: ☐

TX Interruptible Frequencies: ☐

Admit Criteria: Channel Free

Validation Results(?) Warning Messages Search Results Help

Serial Number: 871TNV1690

- In the **RX Frequency** box, specify the radio frequency the radio will receive on.
- In the **TX Frequency** box, specify the radio frequency the radio will transmit on.

Note: The RX and TX frequencies of the radio must be the opposite to the RX and TX frequencies of the corresponding data repeater. In other words, the RX frequency of the repeater must be the same as the TX frequency of the radio; the TX frequency of the repeater must be the same as the RX frequency of the radio.

- Once you have finished configuring the desired radio parameters, click the **Write** button on the toolbar.

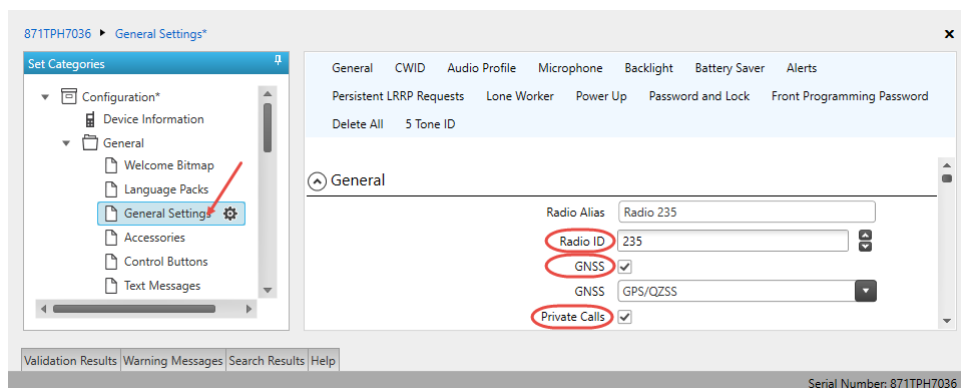
4.3 Configuring a Subscriber Radio

This section describes how to configure a subscriber radio to be used in a Capacity Plus system.

- Connect your radio to the PC via a programming cable.
- Turn on the radio.
- Click the **Read** button on the toolbar.

4.3.1 General Settings

- In the **Set Categories** pane, select **General > General Settings**.



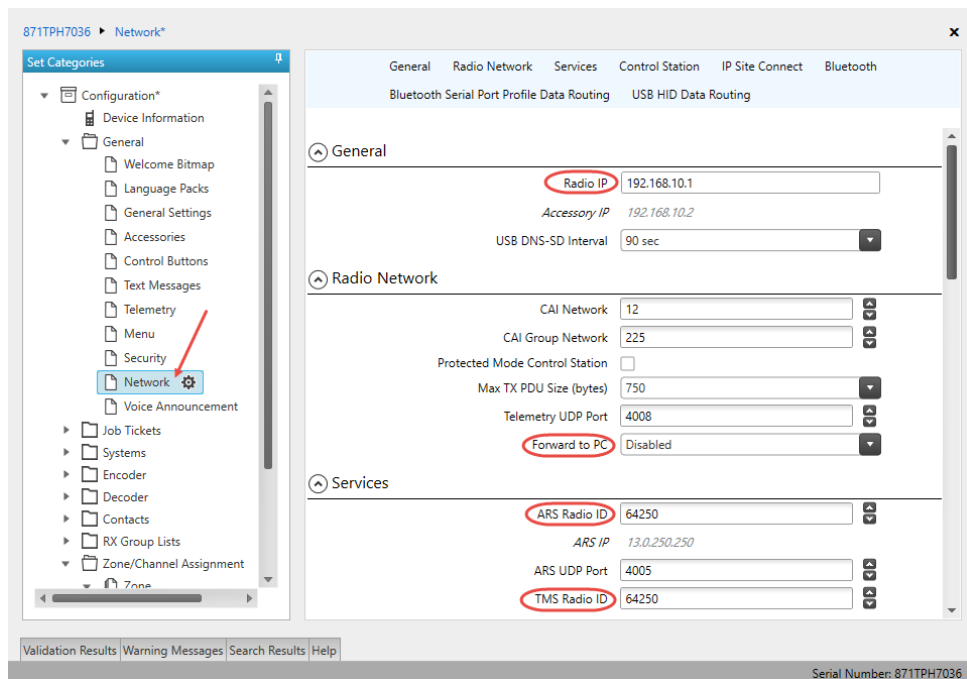
- In the right pane, specify the following parameters:
 - **Radio ID**
Enter the Radio ID of the radio. This ID is used by other calling radios when addressing the radio, for instance, when making a private call or sending a text message.
 - **GNSS**
Select this checkbox to track the location of the radio if the radio is equipped with a GPS module.

- **Private calls**

Select this checkbox to enable the initiation of a Private Call on a digital channel. When disabled, a prohibit tone will sound when the user tries to initiate a Private Call.

4.3.2 Network

- In **Set Categories** pane, select **General > Network**.

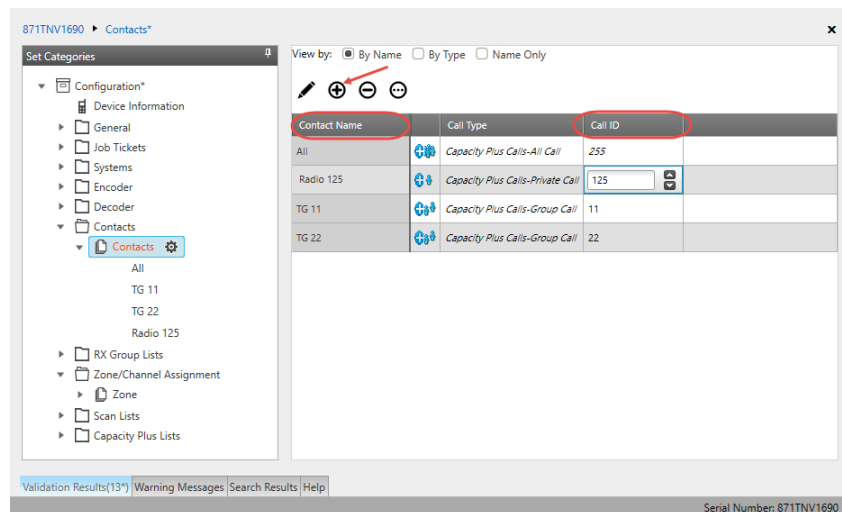


- In the right pane, specify the following parameters.
 - **Radio IP**
This is the IP address used by the radio to communicate with the PC (using the USB connection) and has to be unique. To avoid conflicts in case there are several stations connected with USB, you can change the third octet of the address.
 - **Forward to PC**
From the drop-down list, select **Disabled**.
 - **ARS Radio ID**
Specify the Radio ID of the ARS server.
 - **TMS Radio ID**
Specify the Radio ID of the TMS server.

Note: The **ARS Radio ID** and **TMS Radio ID** must be the same as either **TRBOnet Radio ID** in the Repeater settings if the master repeater is connected to TRBOnet Server via a wireline connection (see section [5.1.1, Adding a Master Repeater](#)), or **Radio ID** in the Control Station settings if the control station is connected to TRBOnet Server via USB (see section [5.1.2, Adding a Control Station](#)), or **MNIS Application ID**, if MNIS is enabled (see section [4.5, Configuring MOTOTRBO MNIS](#)). The recommended value is **64250** for both parameters.

4.3.3 Contacts

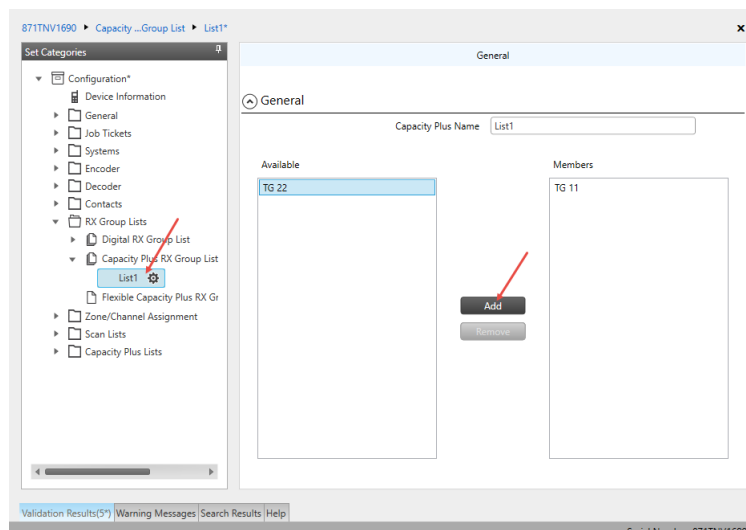
- In the **Set Categories** pane, select **Contacts > Contacts**.
- In the right pane, click the plus sign button, then click **Capacity Plus** and choose the call type.



- Enter the **Contact Name** and **Call ID** for the contacts you have added.

4.3.4 RX Group Lists

- In the **Set Categories** pane, select **RX Group Lists > Capacity Plus RX Group List**.
- In the right pane, click the plus sign button and add the corresponding group list.



- In the left pane, select the group you have added.
- In the right pane, in the **Available** list select a group, or multiple groups using the SHIFT key, and click the **Add** button.

As a result, the group(s) will appear in the **Members** list.

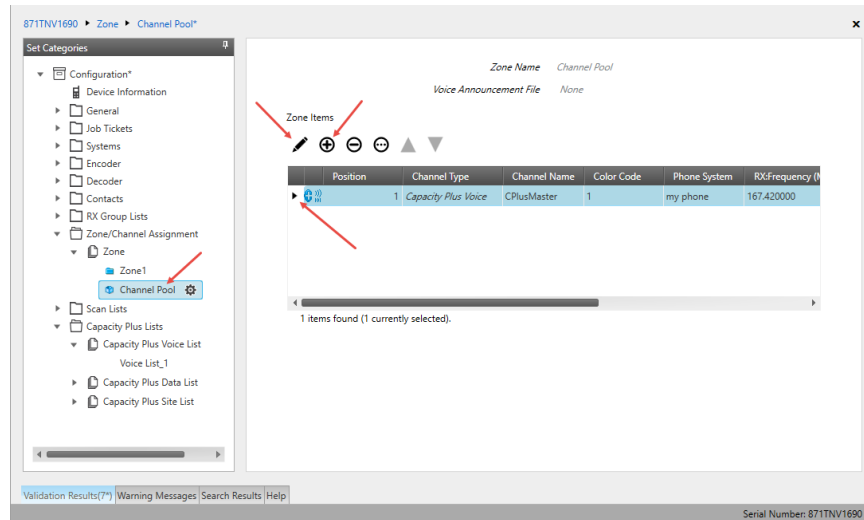
4.3.5 Channels

4.3.5.1 Adding Channels to Channel Pool

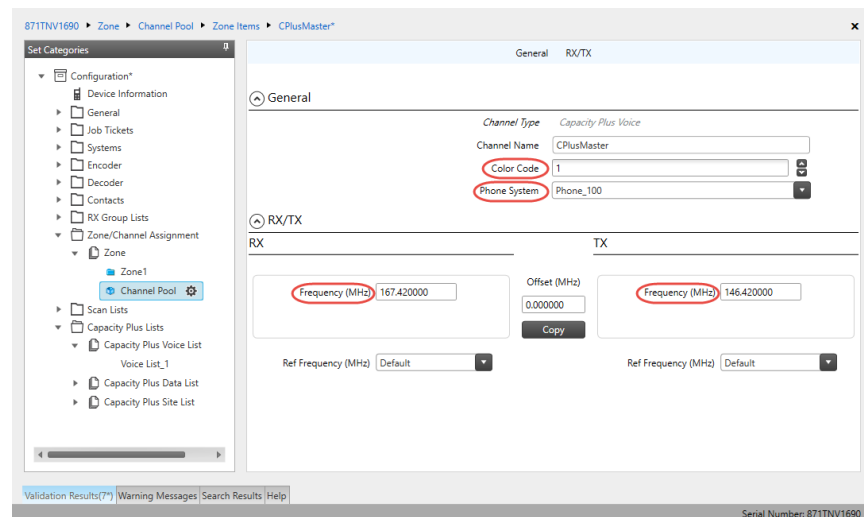
The Channel Pool is a zone for keeping all the Trunked and Data Revert Channels in a Capacity Plus system. It is used for organizing channels in the radio that are not tied to a channel selector position. The Channel Pool is not visible when the radio user navigates through the zones.

Adding Capacity Plus Voice Channel

- In the **Set Categories** pane, select **Zone/Channel Assignment > Zone > Channel Pool**.
- In the right pane, click the plus sign button and then choose **Type: Capacity Plus Voice**.
- In the right pane, select the channel you have added (for example, CPlusMaster) and click the pencil button.



- In the right pane, specify the following parameters:

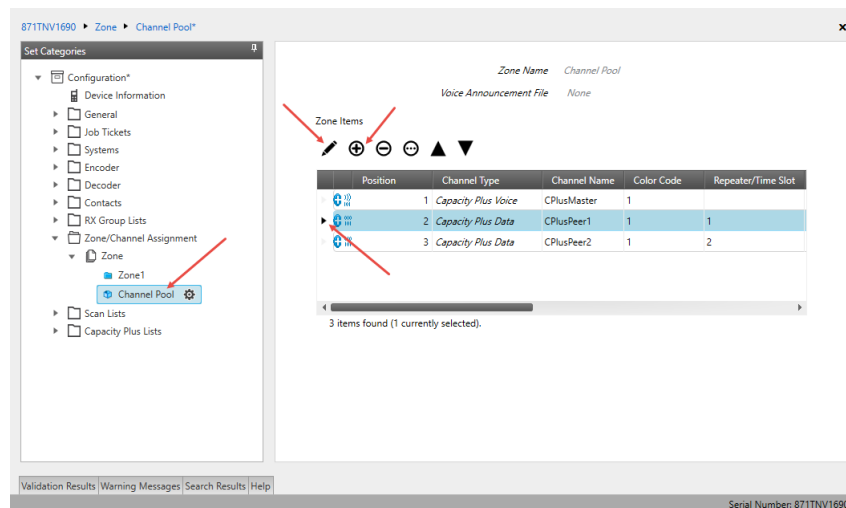


- **Color Code**
Enter the color code for the radio. Note that the color codes on the radios must match the color code of the repeater.
- **Phone System**
Select the phone system you have specified in section [4.3.6, Phone System](#).
- In the **RX Frequency** box, specify the radio frequency the radio will receive on.
- In the **TX Frequency** box, specify the radio frequency the radio will transmit on.

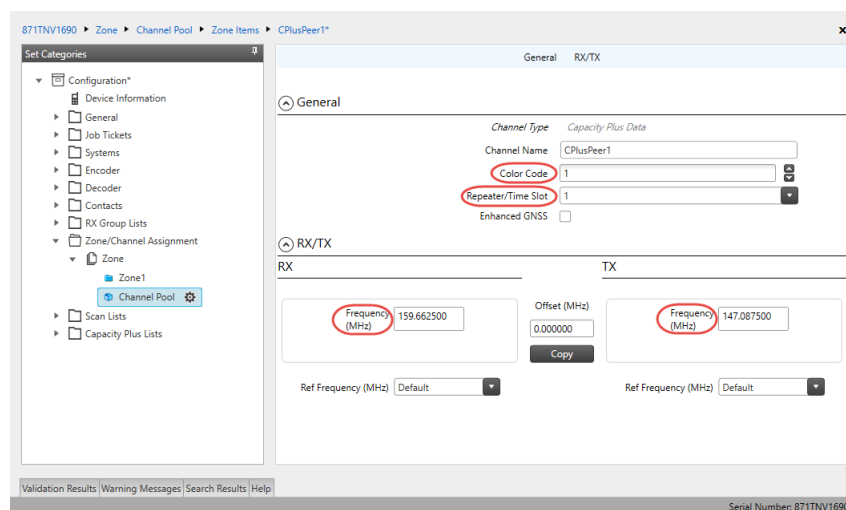
Note: The RX and TX frequencies of the radio must be the opposite to the RX and TX frequencies of the repeater. In other words, the RX frequency of the repeater must be the same as the TX frequency of the radio; the TX frequency of the repeater must be the same as the RX frequency of the radio.

Adding Capacity Plus Data Channel

- In the **Set Categories** pane, select **Zone/Channel Assignment > Zone > Channel Pool**.
- In the right pane, click the plus sign button and then choose **Type: Capacity Plus Data**.
- In the right pane, select the channel you have added (for example, CPlusPeer1) and click the pencil button.



- In the right pane, specify the following parameters:



- **Color Code**

Enter the color code for the radio. Note that the color codes on the radios must match the color code of the data repeater.

- **Repeater/Time Slot**

Select one of the data repeater time slots.

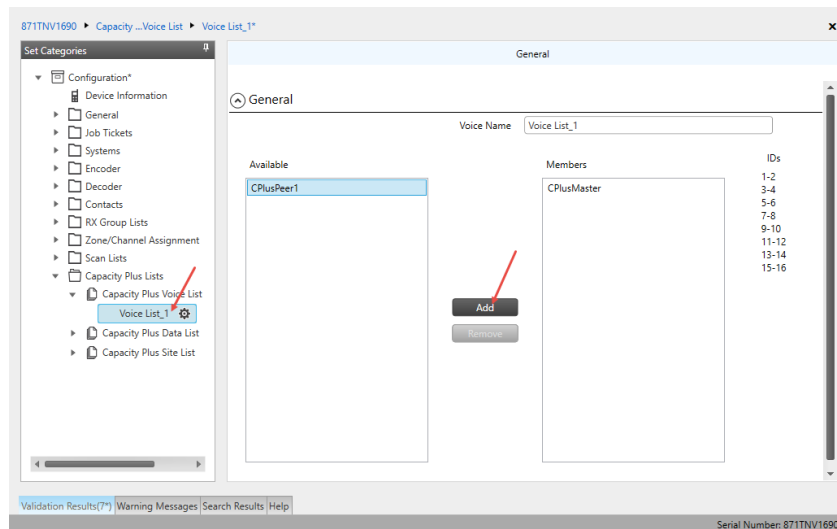
- In the **RX Frequency** box, specify the radio frequency the radio will receive on.
- In the **TX Frequency** box, specify the radio frequency the radio will transmit on.

Note: The RX and TX frequencies of the radio must be the opposite to the RX and TX frequencies of the repeater (see section [4.1.4.2, Adding a Data Channel](#)).

4.3.5.2 Capacity Plus Voice List

This section describes how to add the channels contained in the Channels Pool to a Capacity Plus Voice List.

- In the **Set Categories** pane, select **Capacity Plus Lists> Capacity Plus Voice List**.
- In the right pane, click the plus sign button and add the corresponding voice list.



- In the left pane, select the Voice List you have added.
- In the right pane, in the **Available** list select a channel, or multiple channels using the SHIFT key, and click the **Add** button.

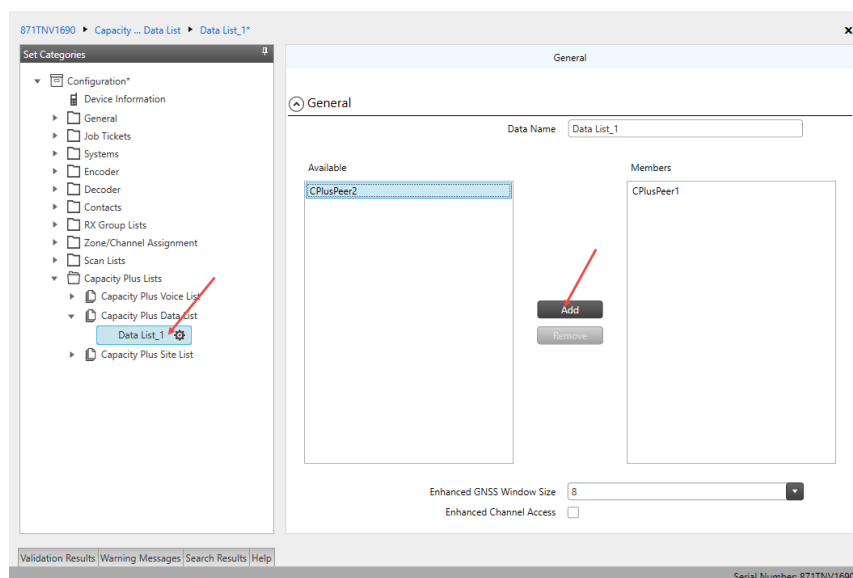
As a result, the channel(s) will appear in the **Members** list.

Note: The order of the channels in the Members list must follow the order of their respective Slot IDs, for example 1-2, 3-4, and so on.

4.3.5.3 Capacity Plus Data List

This section describes how to add the channels contained in the Channels Pool to a Capacity Plus Data List.

- In the **Set Categories** pane, select **Capacity Plus Lists> Capacity Plus Data List**.
- In the right pane, click the plus sign button and add the corresponding data list.

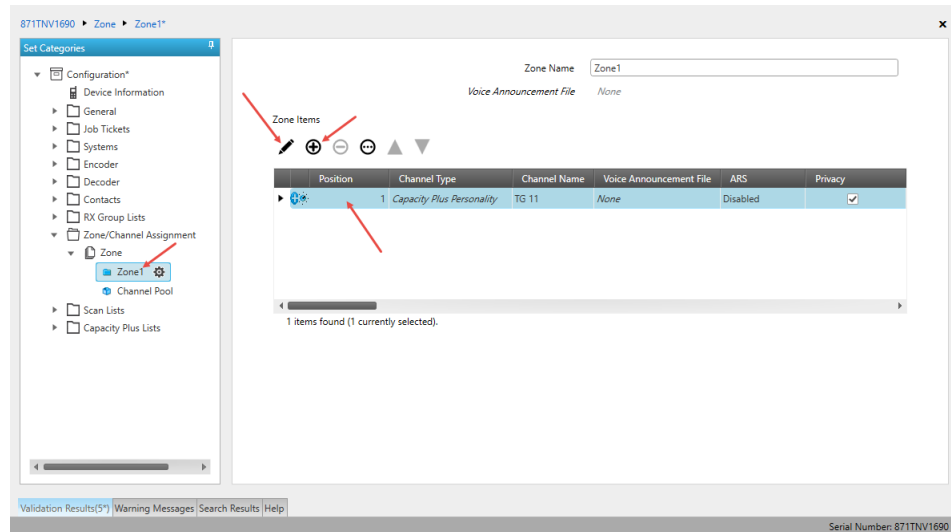


- In the left pane, select the Data List you have added.
- In the right pane, in the **Available** list select a channel, or multiple channels using the SHIFT key, and click the **Add** button.

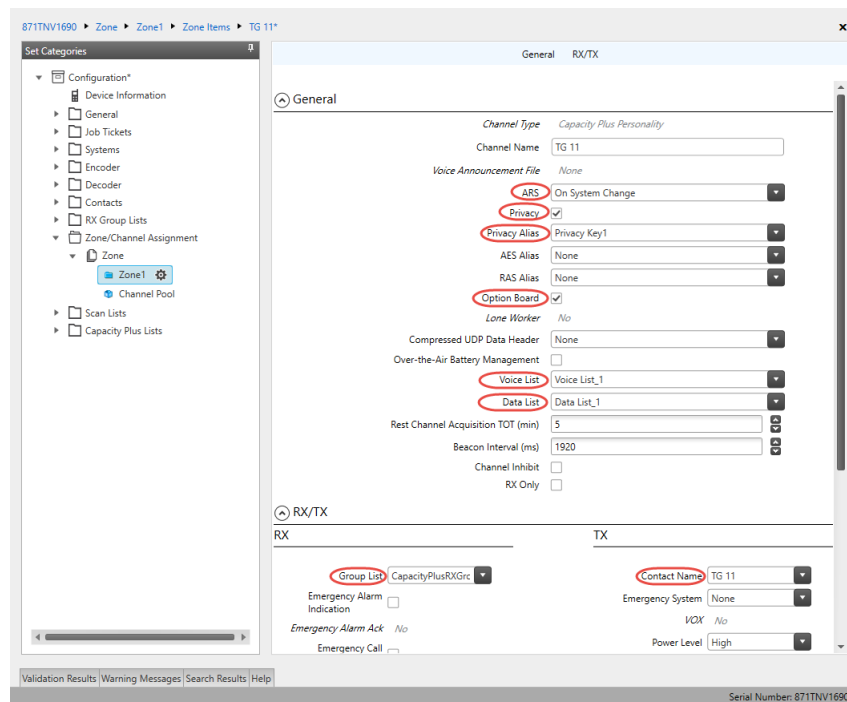
As a result, the channel(s) will appear in the **Members** list.

4.3.5.4 Adding a Capacity Plus Personality Channel

- In the **Set Categories** pane, select **Zone/Channel Assignment**.
- In the right pane, click the plus sign button to add a zone.
- In the **Set Categories** pane, select the zone you have added.
- In the right pane, click the plus sign button and then choose **Type: Capacity Plus Personality**.
- In the right pane, select the channel (for example, TG 11) you have added and click the pencil button.



- In the left pane, select the first channel (for example, named CapacityPlus) that has previously been added.



- In the right pane, specify the following parameters:
 - **ARS**
Select **On System Change** to provide the automated registration for the radio.
 - **Privacy**
Select this option to allow privacy on the channel.

Note: The **Privacy** option is available if the Basic or Enhanced Privacy Type has been selected in the Security section.

■ Privacy Alias

From the drop-down list, select the Key Alias.

Note: The **Privacy Alias** option is available if the Enhanced Privacy Type has been selected in the Security section. The same Key Alias must be used on all system nodes (repeaters and radios).

■ Option Board

Select this option to enable the option board capability on the channel. The option board must be installed and enabled in the radio or this feature will not function.

■ Voice List

Select the Capacity Plus Voice List you have specified in section [4.3.5.2, Capacity Plus Voice List](#).

■ Data List

Select the Capacity Plus Data List you have specified in section [4.3.5.3, Capacity Plus Data List](#).

■ RX Group List

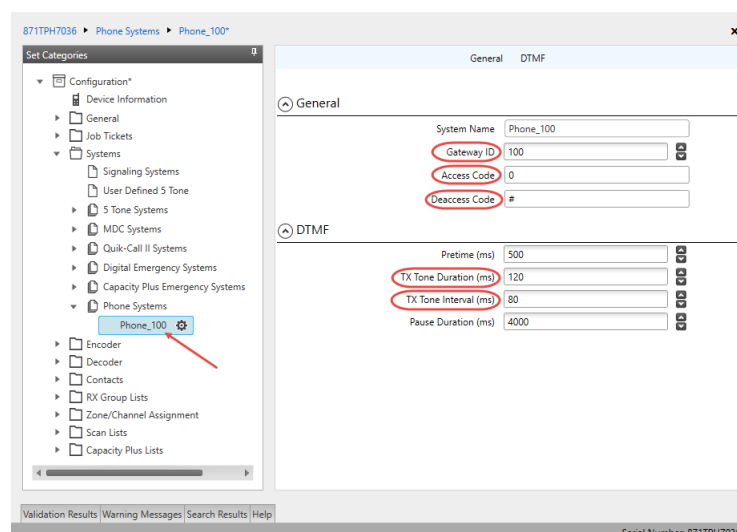
Select the Group list you have specified in section [4.3.4, RX Group Lists](#).

■ TX Contact Name

Select the contact to which a call will be initiated on the channel when pressing the PTT button. The contact is selected from the Contact list you have created in section [4.3.3, Contacts](#).

4.3.6 Phone System

- In the **Set Categories** pane, select **Systems > Phone Systems**.
- In the right pane, click the plus sign button and add the corresponding phone system.
- In the left pane, select the phone system you have added.

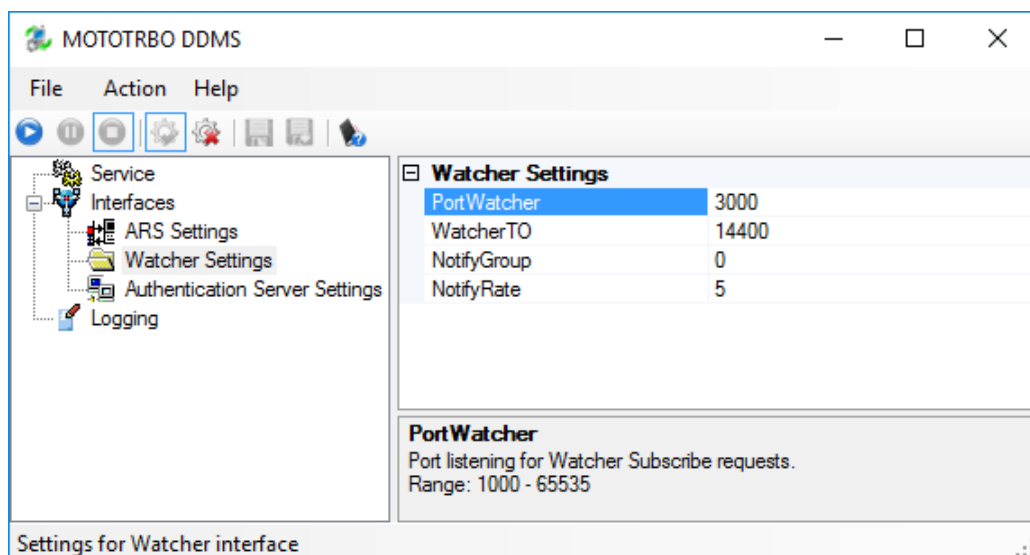


- In the right pane, specify the following parameters:
 - **Gateway ID**
Enter the same ID as **TRBOnet Peer ID** in the Repeater settings of TRBOnet Server.
 - Set **Access Code** to **0** and **Deaccess Code** to **#**, respectively.
 - **TX Tone Duration (ms)**
Enter the duration of the DTMF tone digits, in milliseconds, for the phone system. It is recommended to set this value to **120**.
 - **TX Tone Interval (ms)**
Enter the duration of the intervals between the DTMF tone digits in a transmission sequence, in milliseconds, for the phone system. It is recommended to set this value to **80**.
- Once you have finished configuring the desired radio parameters, click the **Write** button on the toolbar.

4.4 Configuring MOTOTRBO DDMS

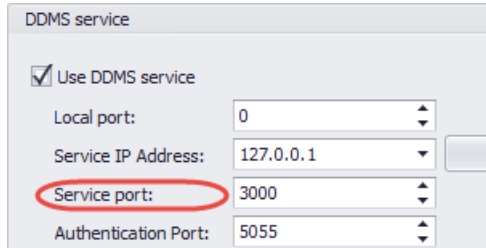
The DDMS, or Device Discovery and Mobility Service is a service for tracking the presence of radio subscribers in the radio network and transmitting the data to the server. The topologies using DDMS are depicted in Figures 6-7. This section describes how to configure and run MOTOTRBO DDMS service using MOTOTRBO DDMS Administrative Client.

- Launch MOTOTRBO DDMS Administrative Client.
- In the left pane, select **Watcher Settings**.



- **PortWatcher**
This is the port number for listening TRBOnet Server requests.

Note: This value will be used when configuring DDMS parameters in section [5.1.1.3, DDMS Service](#), **Service port**.



DDMS service

☒ Use DDMS service

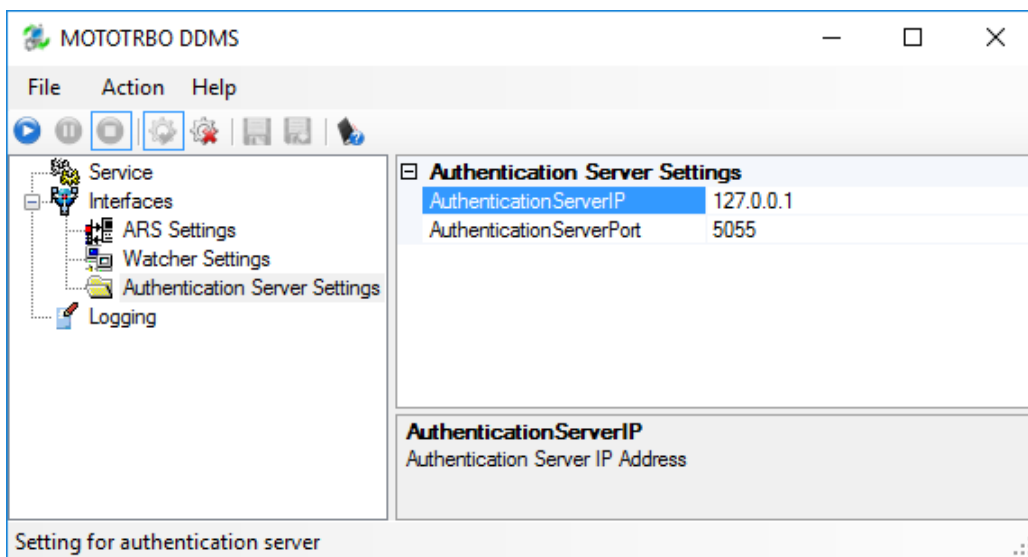
Local port: 0

Service IP Address: 127.0.0.1

Service port: 3000

Authentication Port: 5055

- In the left pane, select **Authentication Server Settings**.



MOTOTRBO DDMS

File Action Help

Service
Interfaces
ARS Settings
Watcher Settings
Authentication Server Settings
Logging

Authentication Server Settings

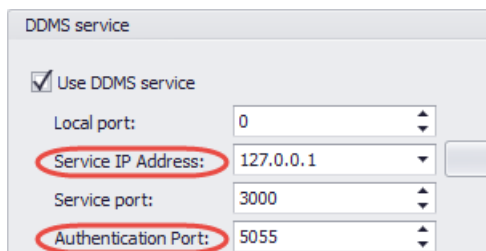
AuthenticationServerIP	127.0.0.1
AuthenticationServerPort	5055

AuthenticationServerIP
Authentication Server IP Address

Setting for authentication server

- **AuthenticationServerIP**
This is the authentication server IP address.
- **AuthenticationServerPort**
This is the authentication server port number.

Note: These values will be used when configuring DDMS parameters in section [5.1.1.3, DDMS Service](#), **Service IP Address** and **Authentication Port**, respectively.



DDMS service

☒ Use DDMS service

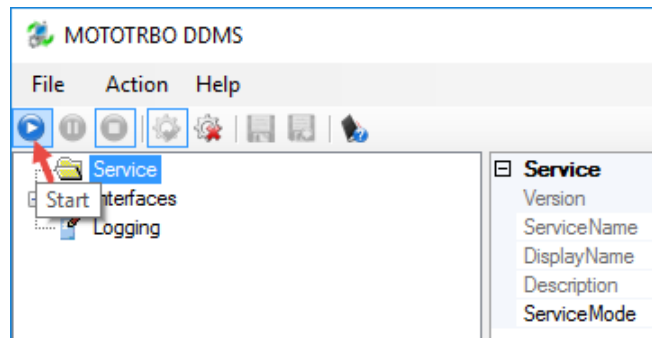
Local port: 0

Service IP Address: 127.0.0.1

Service port: 3000

Authentication Port: 5055

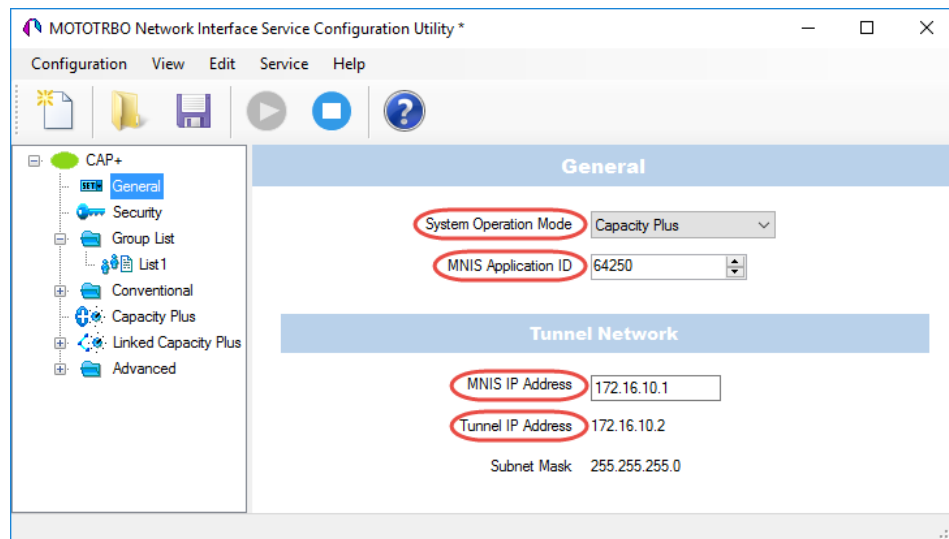
- Once you have finished configuring the desired DDMS parameters, click the **Start** button on the toolbar.



4.5 Configuring MOTOTRBO MNIS

This section describes how to configure and run MOTOTRBO MNIS service using MNIS Configuration Utility.

- Launch MNIS Configuration Utility.
- In the left pane, select **General**.



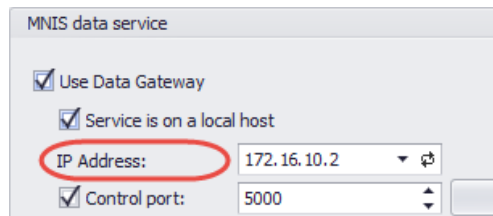
- System Operation Mode**
From the drop-down list, select **Capacity Plus**.
- MNIS Application ID**
Configure an individual ID that uniquely identifies the MNIS application in the radio system. The recommended value is **64250**.

Note: This is the ID that TRBOnet Server uses as its **Radio ID** when connecting a master repeater.

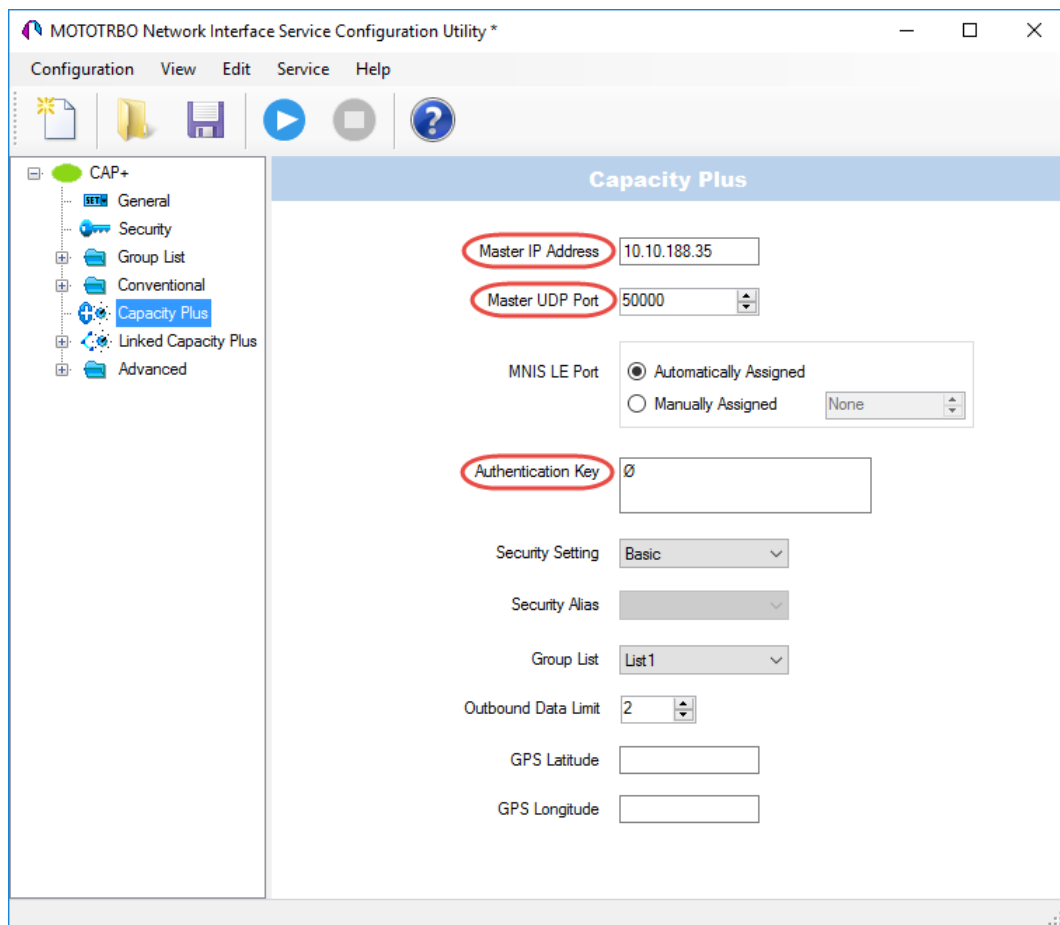
- MNIS IP Address**
It is recommended that the value of **172.16.10.1** is used unless there are conflicts with other network interfaces on the PC.

- **Tunnel IP Address**

This is the IP Address used by the MNIS to communicate with TRBOnet Enterprise (see [5.1.1.4, MNIS Data Service, IP Address](#)).

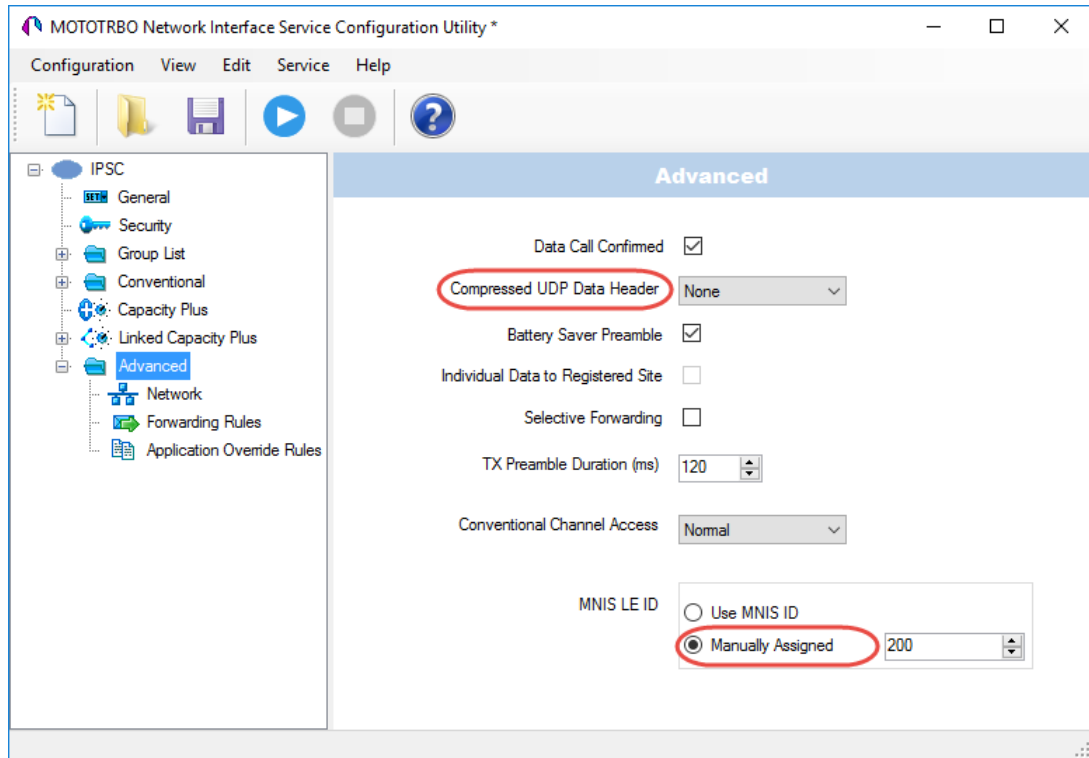


- In the left pane, select **Capacity Plus**



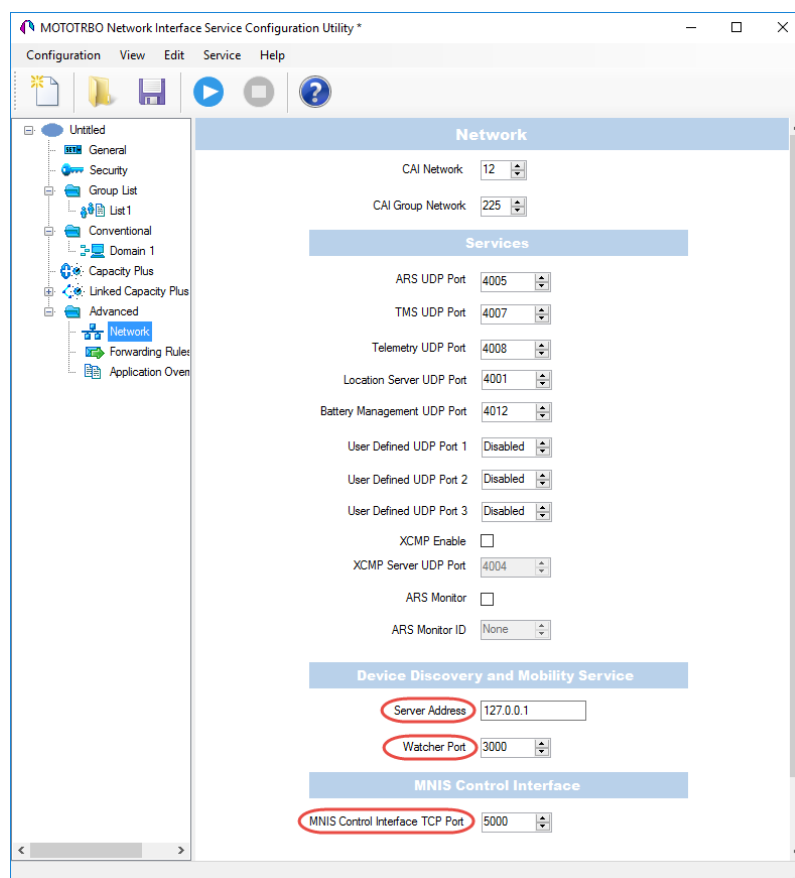
- **Master IP Address**
Enter the Ethernet IP address of the master repeater.
- **Master UDP Port**
Enter the UDP port number of the master repeater.
- **Authentication Key**
Enter the master repeater's authentication key (if any).

- In the left pane, select **Advanced**.



- **Compressed UDP Data Header**
From the drop-down list, select the type of compression protocol used for the UDP Data Header (None, MSI, DMR). It is recommended selecting **MSI**. Note that the same type must be set on all subscriber radio channels (*CPS>Channels>Compressed UDP Data Header*).
- **MNIS LE ID > Manually Assigned**
Enter a unique Peer ID among the repeaters in a radio system.

- In the left pane, select **Network**



Device Discovery and Mobile Service

■ Server Address

This is the IP address of the MOTOTRBO Device Discovery and Mobility Service (DDMS). The recommended value is **127.0.0.1** if both DDMS and MNIS reside on the same PC.

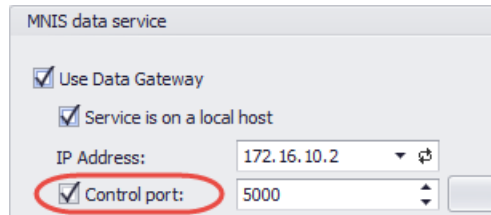
■ Watcher Port

This is the port number on the MOTOTRBO Device Discovery and Mobility Service (DDMS) server to which the Watcher requests should be sent.

MNIS Control Interface

■ MNIS Control Interface TCP Port

This is the Transmission Control Protocol (TCP) port for the MNIS Control Interface server. This value is used when connecting TRBOnet Server to MNIS Service (see [5.1.1.4, MNIS Data Service, Control port](#)).

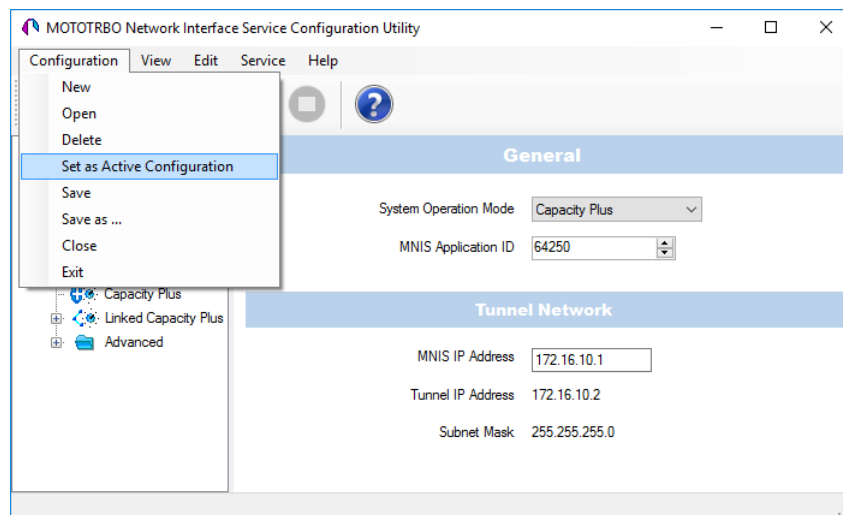


Once you have finished configuring the desired MNIS parameters, do the following:

- Click the **Save** button on the toolbar.



- On the **Configuration** menu, click **Set as Active Configuration**.



- Click the **Start** button on the toolbar.



5 Configuring TRBOnet Enterprise

This section describes how to configure TRBOnet Enterprise software. By properly configuring TRBOnet Server and TRBOnet Dispatch Console, you will be able to utilize the full capabilities of your Capacity Plus system.

5.1 Configuring TRBOnet Server

To start TRBOnet Server, click the corresponding shortcut on the desktop, or click **Start > All Programs > Neocom Software > TRBOnet Server x.x**

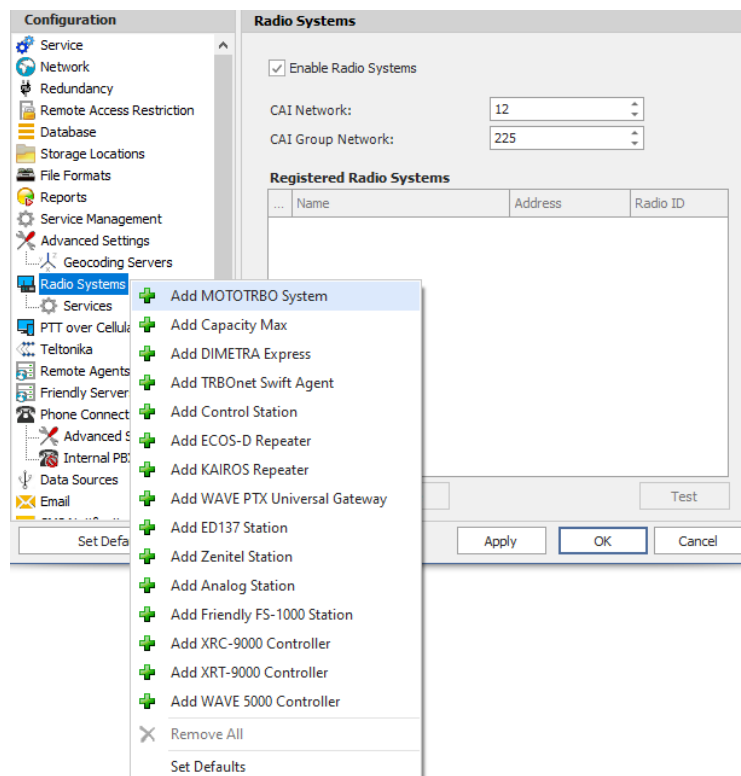
For how to configure TRBOnet Server's Database, Service, Network parameters, etc., refer to *TRBOnet Enterprise Quick Start Guide*.

5.1.1 Adding a Master Repeater

This section describes how to configure TRBOnet Server for communication with the master repeater of a Capacity Plus system.

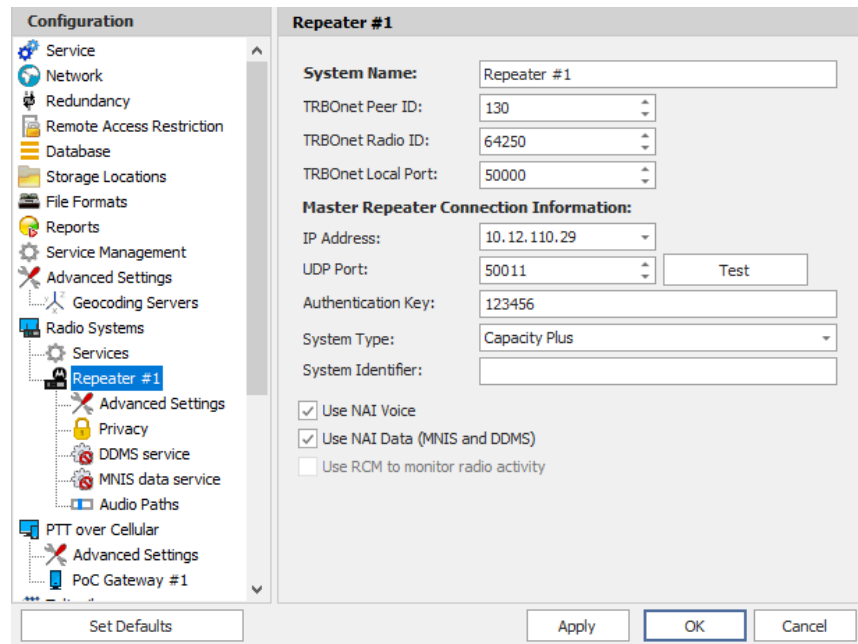
Note: Only the Master repeater needs to be added to TRBOnet Server.

- In the **Radio Systems** pane, click **Add**.
Or, in the **Configuration** pane, right-click **Radio Systems**.
- In the drop-down menu, click **Add MOTOTRBO System**.



In the **Repeater** pane, specify the connection parameters. To ensure your connection parameters match the actual configuration of your radio

network, you may need to use Motorola CPS to determine the values. Contact your radio network administrator, if you do not have this information.



Configuration

- Service
- Network
- Redundancy
- Remote Access Restriction
- Database
- Storage Locations
- File Formats
- Reports
- Service Management
- Advanced Settings
- Geocoding Servers
- Radio Systems
 - Repeater #1**
 - Advanced Settings
 - Privacy
 - DDMS service
 - MINIS data service
 - Audio Paths
- PTT over Cellular
 - Advanced Settings
- PoC Gateway #1

Repeater #1

System Name: Repeater #1

TRBOnet Peer ID: 130

TRBOnet Radio ID: 64250

TRBOnet Local Port: 50000

Master Repeater Connection Information:

IP Address: 10.12.110.29

UDP Port: 50011

Authentication Key: 123456

System Type: Capacity Plus

System Identifier:

☒ Use NAI Voice

☒ Use NAI Data (MNIS and DDMS)

☐ Use RCM to monitor radio activity

- **System Name**
Enter a name for the repeater. This name will be displayed in the Dispatch Console.
- **TRBOnet Peer ID**
Enter a Peer ID for TRBOnet Server. The Peer ID must be unique among the repeaters in the radio system.
- **TRBOnet Radio ID**
Enter the Radio ID of the gateway for voice and data in the radio system. This Radio ID is used as **ARS Radio ID** and **TMS Radio ID** in the Network settings of subscriber radios (see sections [4.3, Configuring a Subscriber Radio](#), [4.3.2, Network](#)). The default value is **64250**.
- **TRBOnet Local Port**
Enter the local port number that will be used by TRBOnet Server to establish a connection to the repeater. Use unique port numbers for each repeater connection if there are several repeaters connected.

Master Repeater Connection Information

- **IP Address**
Enter the WAN IP address of the site router behind which the master repeater resides. Or, enter the LAN address of the single master repeater if there is no site router.

Note: This value is programmed for a repeater via MOTOTRBO CPS, in *Link Establishment>Master IP*. See section [4.1.3](#).

- **UDP Port**

Enter the UDP port number of the master repeater.

Note: This value is programmed for a repeater via MOTOTRBO CPS, in *Link Establishment>Master UDP Port*. See section [4.1.3](#).

- **Authentication Key**

Enter the repeater's authentication key (if any).

Note: This value is programmed for a repeater via MOTOTRBO CPS, in *Link Establishment>Authentication Key*. See section [4.1.3](#).

- **System Type**

From the drop-down list, select **Capacity Plus**.

- **Test**

Click this button to check the connection to your master repeater. If the test is successful, you'll see the information on the repeater you are connected to, such as the serial number, firmware version, and other relevant information.

- **System Identifier**

Enter the system identifier. Note that the system identifier should be the same for all control stations and repeaters used in the same radio system.

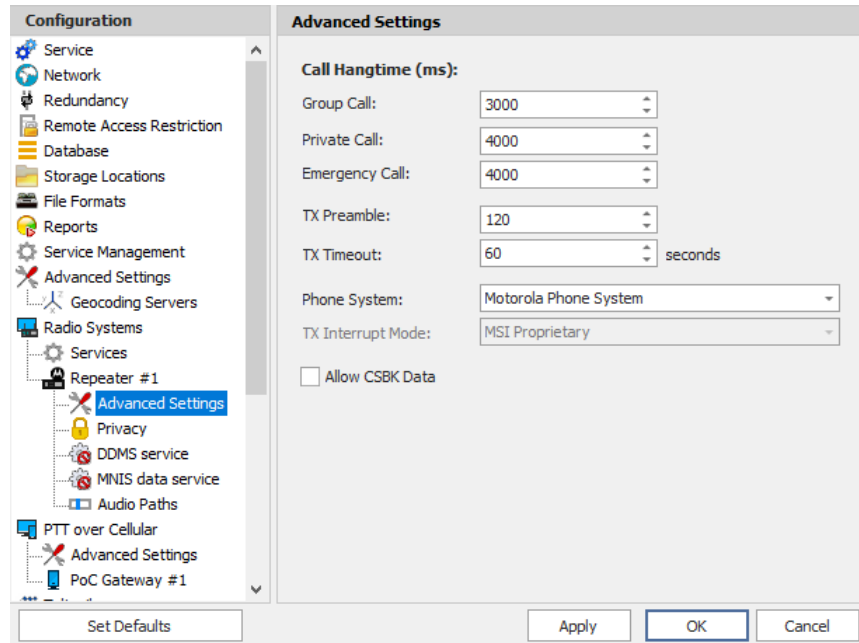
- **Use NAI Voice, Use NAI Data (MNIS and DDMS)**

Select these options if the Network Application Interface Voice and Network Application Interface Data features are enabled on the repeaters.

Click **Apply** after entering all the required values. A confirmation dialog will appear, prompting you to save the configuration and restart the TRBOnet Server service. You can also restart the service manually.

5.1.1.1 Advanced Settings

- In the **Configuration** pane, under the corresponding **Repeater**, select **Advanced settings**.



- In the **Advanced Settings** pane, specify the following repeater-related advanced settings:

Call Hangtime (ms):

- **Group Call**

This value sets the duration the repeater reserves the channel after the end of a group call transmission. During this time, only members of the group that the channel is reserved for can transmit.

- **Private Call**

This value sets the duration a radio keeps the private call setup after a user releases the PTT button. This is to avoid setting up the call again each time a user presses the PTT button to transmit. During this time, other radios can still transmit since the channel is essentially idle. After the hang timer expires, the radio transmits using the *TX Contact Name* parameter specified for this channel in MOTOTRBO CPS.

- **Emergency Call**

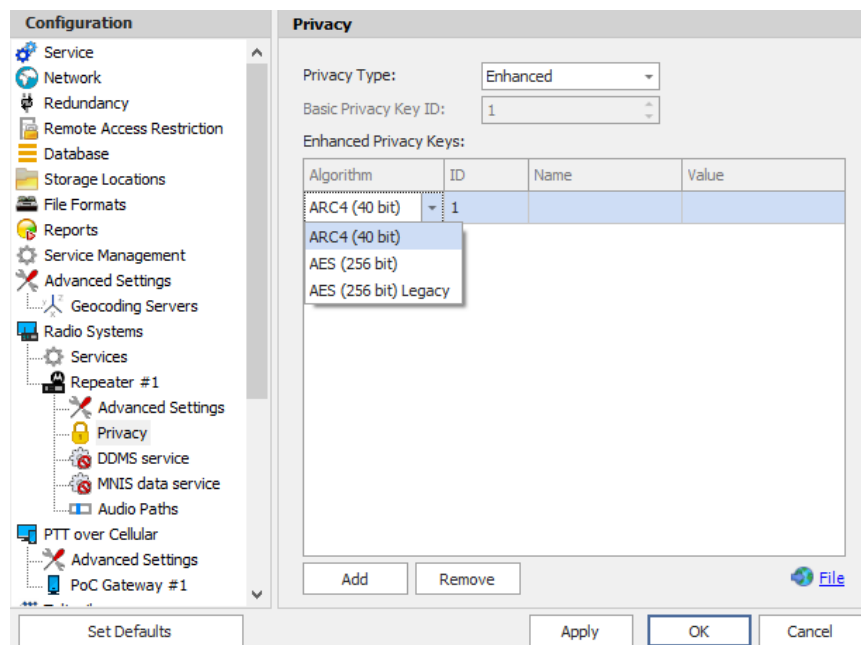
This value sets the duration the repeater reserves the channel after the end of an emergency call transmission. During this time, only members of the Group that the channel is reserved for can transmit.

Note: The values of the above three parameters must be taken from the corresponding parameter values programmed for the repeater via MOTOTRBO CPS in *General Settings*.

- **TX Preamble**
Enter the value of the TX Preamble. The TX Preamble is a string of bits added in front of a data or control message (Text Messaging, Location Messaging, Registration, Radio Check, Private Call, and other message types) before transmission. The acceptable range is 0 - 8640 ms. The recommended value is 120 ms.
- **TX Timeout**
Enter the time, in seconds, to be used as a voice session limit. When the dispatcher starts any voice session in the Dispatch Console, transmission will be interrupted after this TX Timeout expires.
- **Phone system**
From the drop-down list, select the system for phone calls:
 - **Motorola Phone System**
This system uses a special call type with the parameters specified for a radio unit in MOTOTRBO CPS.
 - **TRBOnet Phone System (TX Interrupt)**
This is a phone call system based on the private call type using TX Interrupt feature. This phone system is available for radio systems with control stations.
- **Allow CSBK Data**
Select this option so that GPS data is sent in a single CSBK.

5.1.1.2 Privacy

- In the **Configuration** pane, under the corresponding **Repeater**, select **Privacy**.



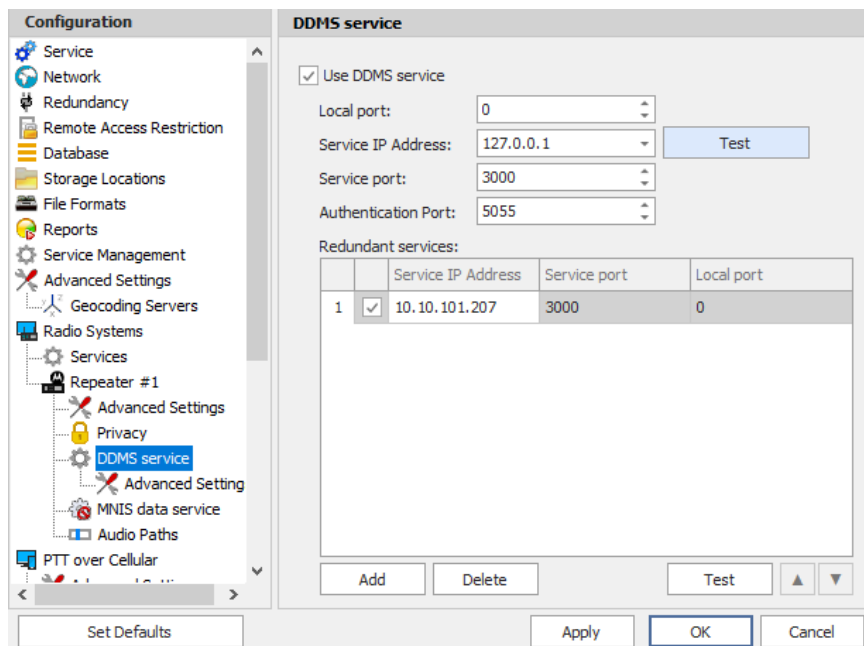
- In the **Privacy** pane, specify the following privacy-related settings:

- **Privacy Type**
From the drop-down list, select one of the privacy types: **None**, **Basic**, or **Enhanced**.
- **Basic Privacy Key ID**
Enter the Privacy Key ID available for the **Basic** privacy type.
- **Enhanced Privacy Keys**
Here you add enhanced privacy keys when the **Enhanced** privacy type is selected.
 - Click **Add** and specify the required **Algorithm**, **ID**, **Name**, and **Value** for the privacy key being added.
 - ✓ **Algorithm**
From the drop-down list, select one of the enhanced algorithms if you are going to use additional encryption.

5.1.1.3 DDMS Service

The DDMS, or Device Discovery and Mobility Service is a service for tracking the presence of radio subscribers in the radio network and transmitting the data to the server.

- In the **Configuration** pane, under the corresponding **Repeater**, select **DDMS service**.



Configuration

- Service
- Network
- Redundancy
- Remote Access Restriction
- Database
- Storage Locations
- File Formats
- Reports
- Service Management
- Advanced Settings
- Geocoding Servers
- Radio Systems
 - Services
 - Repeater #1
 - Advanced Settings
 - Privacy
 - DDMS service**
 - Advanced Setting
 - MNIS data service
 - Audio Paths
- PTT over Cellular

DDMS service

☒ Use DDMS service

Local port:

Service IP Address:

Service port:

Authentication Port:

Redundant services:

		Service IP Address	Service port	Local port
1	<input checked="" type="checkbox"/>	10.10.101.207	3000	0

- In the **DDMS service** pane, specify the following DDMS service-related settings:
 - **Use DDMS service**
Select this option to enable the DDMS service for the server.

- **Local Port**
Enter the number of the local port to be used on a PC with TRBOnet Dispatch Software for DDMS service.
- **Service IP Address**
Enter the IP Address of the PC with the DDMS service installed and running.
- **Service port**
Enter the service port number.

Note: This value is programmed for a DDMS service via MOTOTRBO DDMS Administrative Client, in *Interfaces>Watcher Settings>PortWatcher*.

- **Authentication Port**
Enter the authentication server port number.

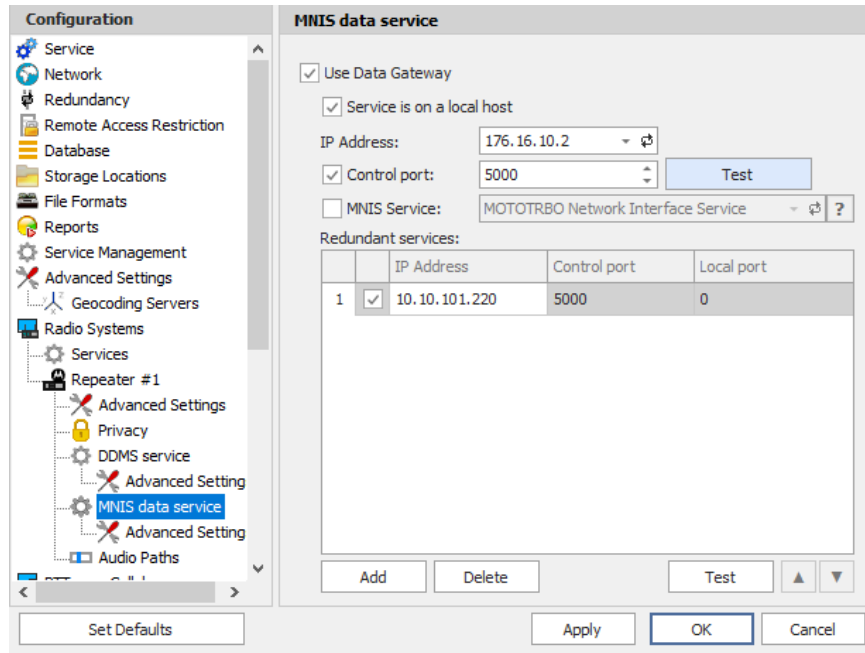
Note: This value is programmed for a DDMS service via MOTOTRBO DDMS Administrative Client, in *Interfaces>Authentication Server Settings>AuthenticationServerPort*.

- **Redundant services**
Here you see the list of redundant DDMS services for failover purposes.
 - Click **Add** and specify the required parameters for the DDMS service being added.
 - Click **Test** to test if the selected DDMS service is available.
 - Use the **Up** (▲) and **Down** (▼) buttons to move a selected DDMS service up and down in the priority list of DDMS services.

5.1.1.4 MNIS Data Service

The MNIS, or Motorola Network Interface Service, is a Windows application which acts as a data gateway between the data applications and the radio system. Data messages are routed through the MNIS.

- In the **Configuration** pane, under the corresponding **Repeater**, select **MNIS data service**.



Configuration

- Service
- Network
- Redundancy
- Remote Access Restriction
- Database
- Storage Locations
- File Formats
- Reports
- Service Management
- Advanced Settings
- Geocoding Servers
- Radio Systems
- Services
 - Repeater #1
 - Advanced Settings
 - Privacy
 - DDMS service
 - Advanced Setting
 - MNIS data service**
 - Advanced Setting
- Audio Paths

MNIS data service

☒ Use Data Gateway

☒ Service is on a local host

IP Address: 176.16.10.2

☒ Control port: 5000 Test

☐ MNIS Service: MOTOTRBO Network Interface Service

Redundant services:

		IP Address	Control port	Local port
1	<input checked="" type="checkbox"/>	10.10.101.220	5000	0

Add Delete Test ▲ ▼

Set Defaults Apply OK Cancel

- In the **MNIS data service** pane, specify the following MNIS data service-related settings:

- **Use Data Gateway**

Select this option to enable the MNIS data service for the server.

- **Service is on a local host**

Select this option if the MNIS data service will be used on the local PC.

- **IP Address**

Enter the IP Address used by the MNIS to communicate with the PC.

Note: This value is programmed for a MNIS data service via MOTOTRBO MNIS Configuration Utility, and can be retrieved from
General>Tunnel Network>Tunnel IP Address.

- **Control port**

Enter the number for the MNIS control port.

Note: This value is programmed for a MNIS data service via MOTOTRBO MNIS Configuration Utility, in
Advanced>Network>MNIS Control Interface TCP Port.

- **MNIS Service**

Select this option, and from the drop-down list select the available MNIS service.

- **Redundant services**

Here you see the list of redundant MNIS data services for failover purposes.

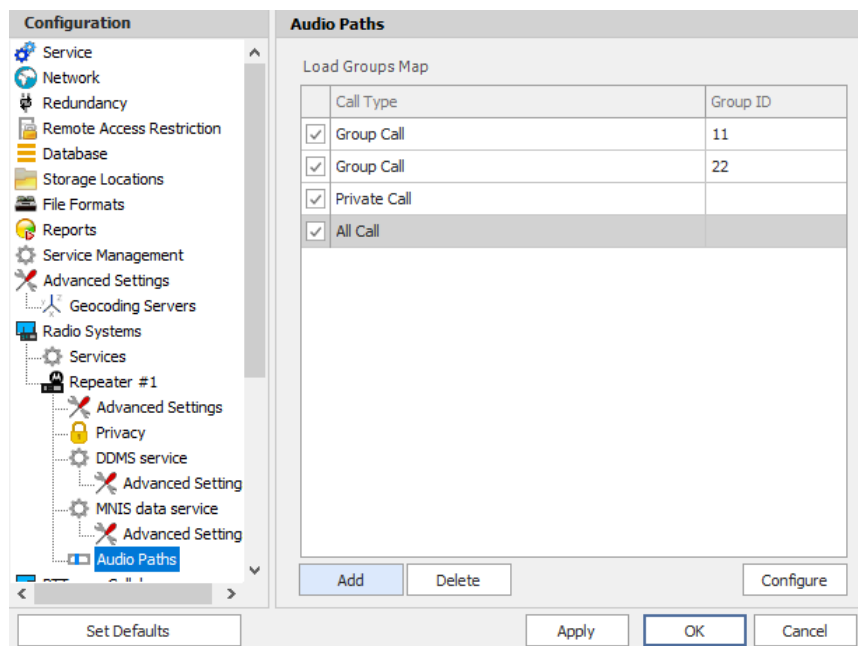
- Click **Add** and specify the required parameters for the MNIS data service being added.

- Click **Test** to test if the selected MNIS data service is available.
- Use the **Up** (▲) and **Down** (▼) buttons to move a selected MNIS data service up and down in the priority list of MNIS data services.

5.1.1.5 Audio Paths

The Audio Paths are talk paths of the system to make and receive Voice Calls; in general, they are talk groups. TRBOnet Server requires that all audio paths of a Capacity Plus system be registered in its configuration. If an audio path is not registered, the TRBOnet operator will not be able to receive and transmit to the corresponding talk group.

- In the **Configuration** pane, under the corresponding **Repeater**, select **Audio Paths**.



The screenshot shows the TRBOnet Configuration window. On the left is the 'Configuration' pane with a tree view. The 'Audio Paths' option is selected under 'Repeater #1'. The main area is the 'Audio Paths' pane, which contains a 'Load Groups Map' table. The table has two columns: 'Call Type' and 'Group ID'. The rows are: 'Group Call' (checked) with Group ID '11', 'Group Call' (checked) with Group ID '22', 'Private Call' (checked) with an empty Group ID, and 'All Call' (checked) with an empty Group ID. Below the table are 'Add' and 'Delete' buttons. At the bottom right is a 'Configure' button. At the bottom left is a 'Set Defaults' button. At the bottom center are 'Apply', 'OK', and 'Cancel' buttons.

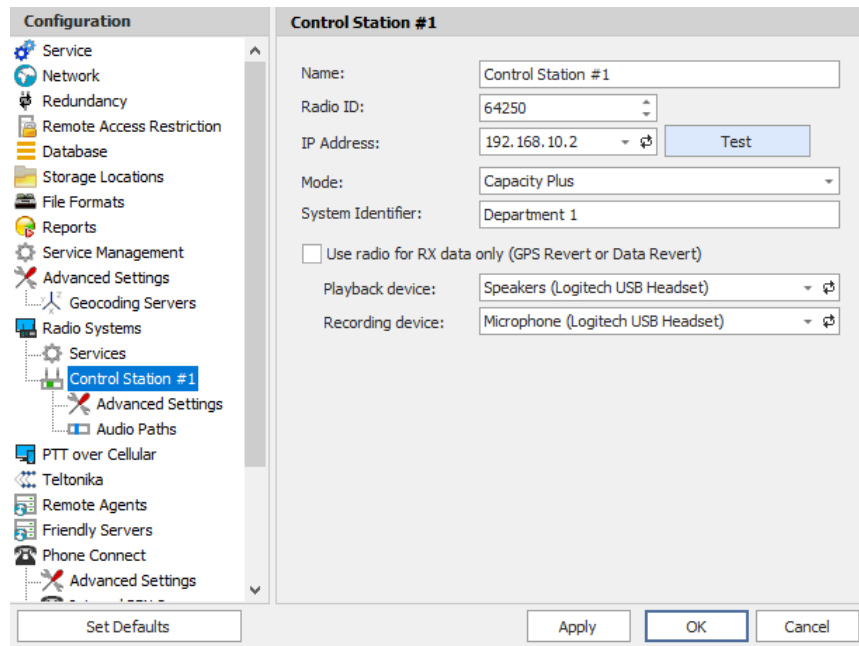
Call Type	Group ID
<input checked="" type="checkbox"/> Group Call	11
<input checked="" type="checkbox"/> Group Call	22
<input checked="" type="checkbox"/> Private Call	
<input checked="" type="checkbox"/> All Call	

- In the **Audio Paths** pane, specify the following Audio Path-related settings:
 - To add an audio path to the system, click **Add**.
 - Make sure the check box in the first column is selected to make and receive voice calls from the selected subscriber.
 - From the drop-down list, select the **Call Type** for the audio path. The available call types are All Call, Group Call, and Private Call.
 - Enter the **Group ID**, which is an ID of the talk group the dispatcher can make calls to. The Group ID is not applicable for Private Calls and All Calls.
 - To configure the selected audio path, click **Configure**.
 - Specify the desired audio path settings similar to those for a common repeater slot.

5.1.2 Adding a Control Station

This section describes how to configure TRBOnet Server for communication with a control station in a Capacity Plus system.

- In the **Radio Systems** pane, click **Add**.
Or, in the **Configuration** pane, right-click **Radio Systems**.
- In the drop-down menu, click **Add Control Station**.



The screenshot shows the TRBOnet Server Configuration window. On the left is the 'Configuration' pane with a tree view containing various system settings. 'Radio Systems' is selected, and 'Control Station #1' is highlighted. The main area is the 'Control Station #1' configuration pane. It contains the following fields and options:

- Name:** Control Station #1
- Radio ID:** 64250
- IP Address:** 192.168.10.2 (with a 'Test' button next to it)
- Mode:** Capacity Plus
- System Identifier:** Department 1
- ☐ Use radio for RX data only (GPS Revert or Data Revert)
- Playback device:** Speakers (Logitech USB Headset)
- Recording device:** Microphone (Logitech USB Headset)

At the bottom of the window are buttons for 'Set Defaults', 'Apply', 'OK', and 'Cancel'.

- In the **Control Station** pane, specify the following control station-related parameters:
 - **Name**
Enter a name for the control station. This name will be displayed in the Dispatch Console.
 - **Radio ID**
This is the Radio ID of the radio unit connected as a control station.

Note: This box is populated automatically once you have successfully tested the control station by clicking the **Test** button.

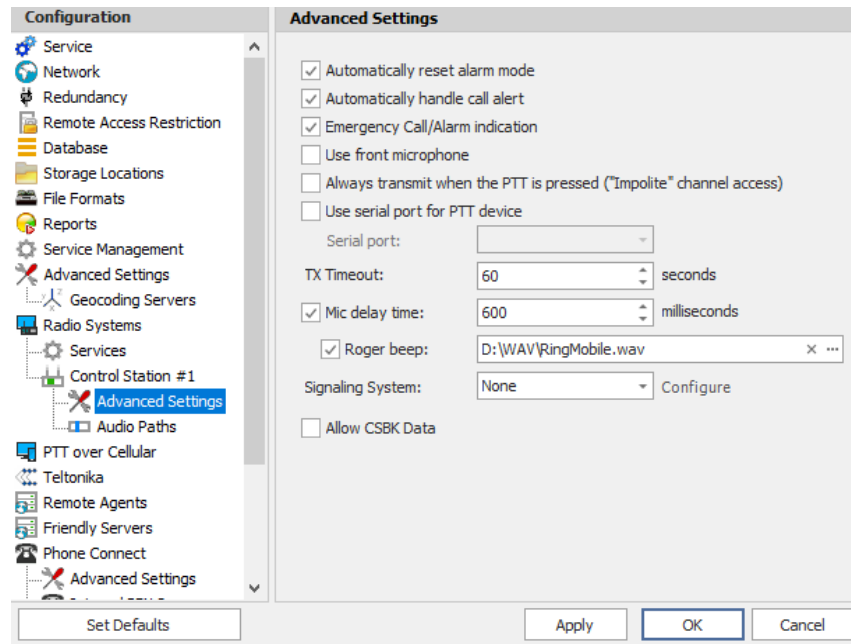
- **IP Address**
Enter, or select from the list, the IP Address of the control station network interface.

Note: This value can be taken from the radio's configuration in MOTOTRBO CPS, in *Network>Accessory IP*.

- **Test**
Click this button to check the connection to the control station. If the test is successful, you'll see the information on the control station you are connected to, such as radio ID, serial number, firmware version, and other relevant information.
- **Mode**
From the drop-down list, select **Capacity Plus**.
- **System Identifier**
Enter the system identifier. Note that the system identifier should be the same for all control stations and repeaters used in the same radio system.
- **Use the radio for RX data only (GPS Revert or Data Revert)**
Select this option to configure the radio channel so that it will only receive data, thus having no transmission capability.
- **Playback device**
From the drop-down list, select the playback device on the PC that will be used to transfer audio data to the connected control station.
- **Recording device**
From the drop-down list, select the recording device on the PC that will be used to receive audio data from the control station connected via a line-in jack.
- Click **Apply** after entering all the required values. A confirmation dialog will appear, prompting you to save the configuration and restart the TRBOnet Server service. You can also restart the service manually.

5.1.2.1 Advanced Settings

- In the **Configuration** pane, under the corresponding **Control Station**, select **Advanced Settings**.



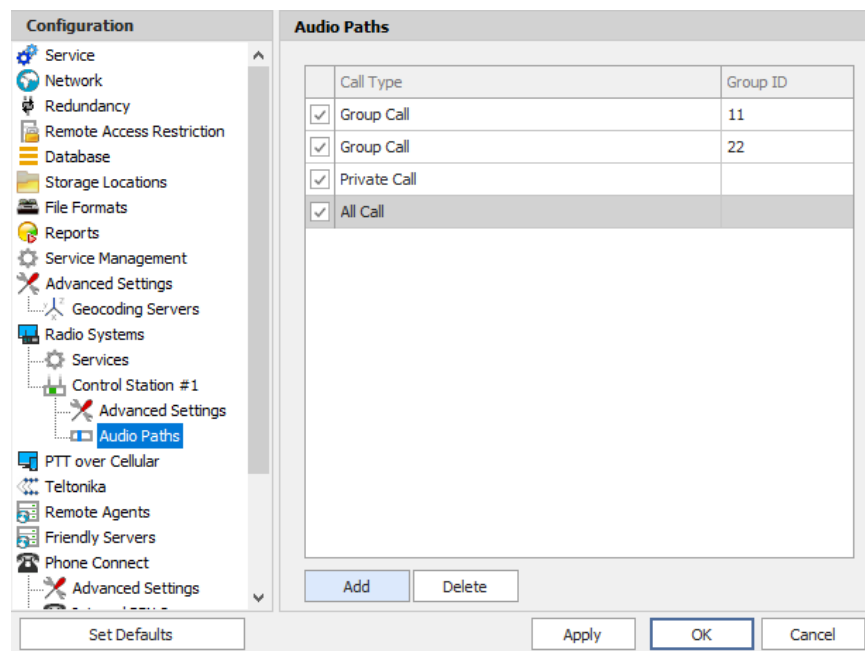
- In the **Advanced Settings** pane, specify the following control station-related advanced settings:
 - **Automatically reset alarm mode**
Select this option to reset alarm mode on the control station radio automatically. It is recommended to enable this option.
 - **Automatically handle call alert**
Select this option to automatically redirect call alerts from the control station radio to the Dispatch Console.
 - **Emergency Call/Alarm indication**
Select this option so that audio and visual indication is given by the control station radio when an emergency Call/Emergency Alarm is received.
 - **Use front microphone**
Select this option to use a remote control of the PTT button via a remote speaker microphone on the radio.
 - **Always transmit when the PTT is pressed ("Impolite" channel access)**
Select this option so that when the PTT button is pressed, the radio will start transmitting regardless of whether the channel is free or not (that is any transmission in progress will be interrupted).
 - **Use serial port for PTT device**
Select this option to use a remote control of the PTT button via the serial port of the PC, and select the serial port from the drop-down list.
 - **TX Timeout**
Enter the time, in seconds, to be used as a voice session limit. When a dispatcher starts any voice session in the Dispatch Console, the ongoing transmission will be interrupted after this TX Timeout expires.

- **Mic delay time**
Select this option and specify the time, in milliseconds, to be used as a delay time interval between pushing the PTT and enabling the microphone.
- **Roger beep**
Select this option to play a beep sound for the time interval until the microphone is enabled. Click the ellipsis button (...) on the right and locate the desired sound file (WAV).
- **Signaling system**
From the drop-down list, select the signaling system.
- **Allow CSBK Data**
Select this option so that the GPS data are compressed into a single CSBK data.

5.1.2.2 Audio Paths

The Audio Paths are talk paths of the system to make and receive Voice Calls; in general, they are talk groups. TRBOnet Server requires that all audio paths of a radio system be registered in its configuration. If an audio path is not registered, the TRBOnet operator will not be able to receive and transmit to the corresponding talk group.

- In the **Configuration** pane, under the corresponding **Control Station**, select **Audio Paths**.



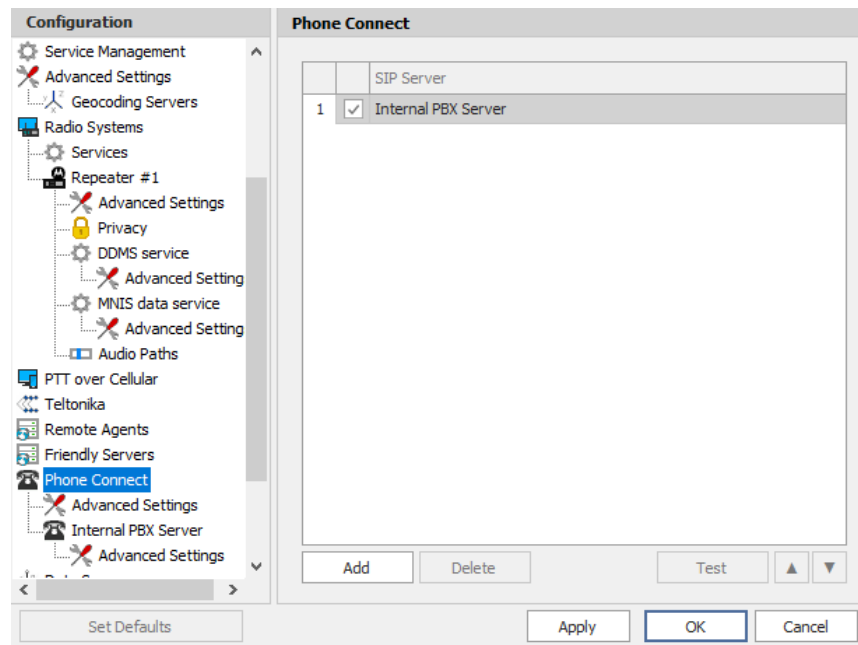
- In the **Audio Paths** pane, specify the following Audio Path-related settings:
 - To add an audio path to the system, click **Add**.

- Make sure the check box in the first column is selected to make and receive voice calls from the selected subscriber.
- From the drop-down list, select the **Call Type** for the audio path. The available call types are All Call, Group Call, and Private Call.
- Enter the **Group ID**, which is an ID of the talk group the dispatcher can make calls to. The Group ID is not applicable for Private Calls and All Calls.

5.1.3 Enabling Telephony

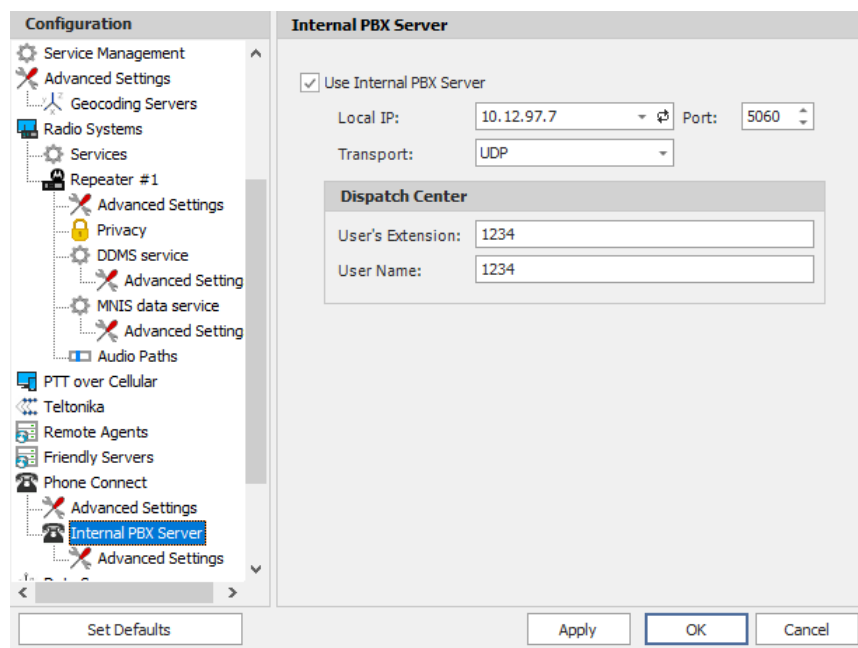
TRBOnet Server has its own built-in SIP server to support VoIP communications between the radios as well as other SIP-compliant clients.

- In the **Configuration** pane, select **Phone Connect**.
- In the **Phone Connect** pane, select **Internal PBX Server**.



5.1.3.1 Internal PBX Server

- In the **Configuration** pane, select **Internal PBX Server**.



- In the **Internal PBX Server** pane, specify the following parameters:
 - **Local IP**
Enter the IP address of the PC with TRBOnet Server.
 - **Port**
Enter the local UDP port number for the SIP service (5060, by default).
 - **Transport**
In the list, select one or more transport protocols (UDP, TCP, and/or TLS). Note that if **TLS** is selected, make sure that a valid certificate is specified in **Network > Server Certificate**.

Dispatch Center

- **User's Extension**
Enter the user extension number that will be used by the Dispatch Center.
- **User Name**
Enter the user name that will be used by the Dispatch Center.

Note: In addition, make sure that the Private Call audio path has been added to the repeater's Audio Paths (see section [5.1.1.5, Audio Paths](#)).

5.2 Configuring TRBOnet Dispatch Console

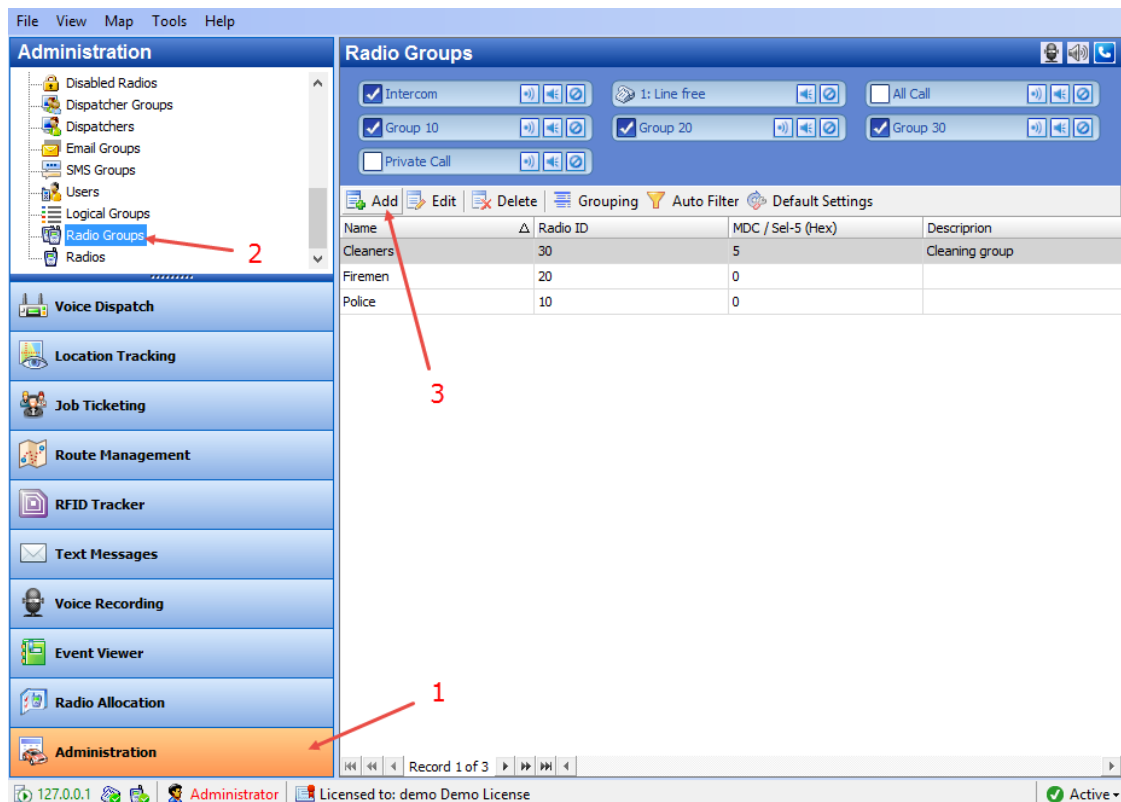
To start TRBOnet Server, click the corresponding shortcut on the desktop, or click **Start > All Programs > Neocom Software > TRBOnet Dispatch x.x**

The dialog box will appear prompting you to enter the TRBOnet Server IP address, User Name, and Password. The default Administrator credentials are **admin** for the login and **admin** for the password.

For a more detailed information on how to use TRBOnet Dispatch Console, refer to *TRBOnet Enterprise User Manual*.

5.2.1 Registering Radio Groups

Go to **Administration (1)**, **Radio Group (2)** to add/edit/delete Radio Groups in the system.

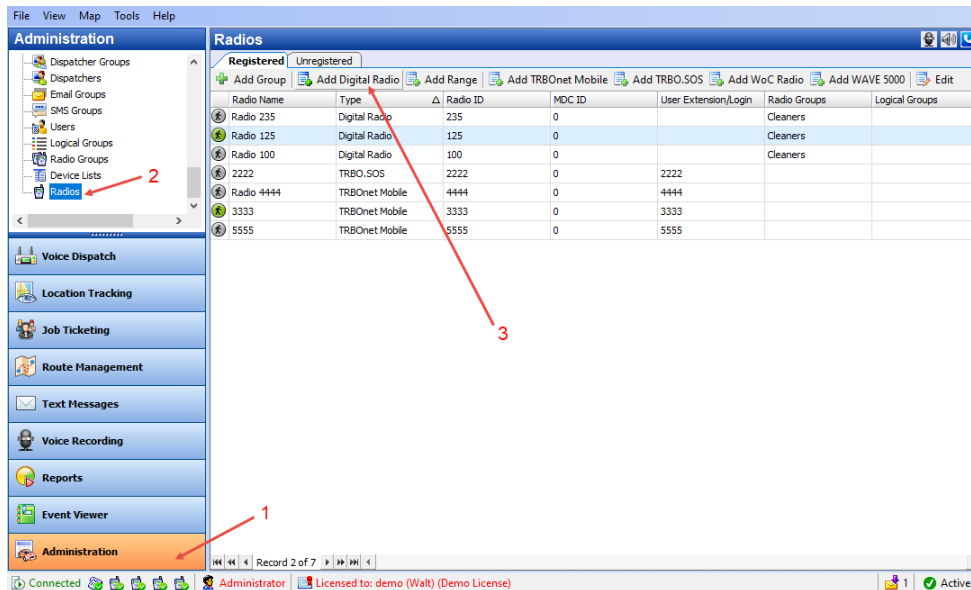


- Click **Add (3)** to add a radio group to the system:
- In the dialog box that appears, specify the **Name** and **Group ID (Radio ID)** of the group you are adding.

Note: Make sure that the radio group(s) created in the Dispatch Console are present in the radio's RX Group List (see section [4.3.4, RX Group Lists](#)). In addition, make sure these radio groups have been added to TRBOnet Server as Audio Paths.

5.2.2 Registering Radios

Go to **Administration** (1), **Radios** (2) to add/edit/delete Radios in the system.



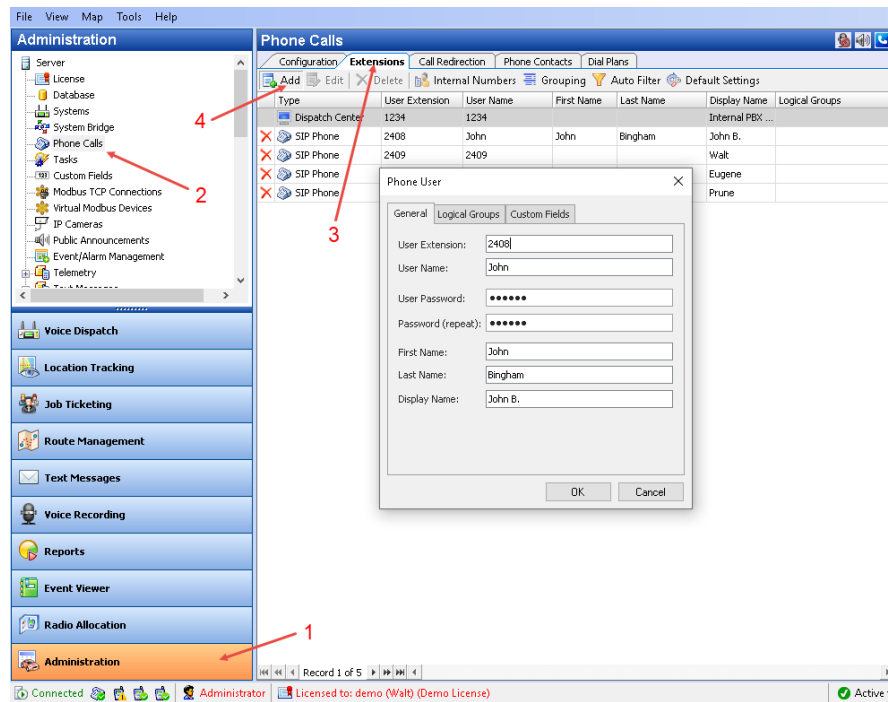
- Click **Add Digital Radio** (3) to add a new radio.
- In the dialog box that appears, specify the **Radio Name** and **Radio ID**, and **Radio Groups**, to which the radio belongs.

5.2.3 Configuring Telephony

5.2.3.1 Registering SIP extensions

This section describes how to add SIP extensions to TRBOnet Dispatch Console.

- Go to **Administration** (1), **Phone Calls** (2).
- In the **Phone Calls** pane, click the **Extensions** tab (3), and then **Add** (4).



In the **Phone User** dialog box, specify the following parameters:

- **User Extension**
Enter the extension number that will be used by the phone user.
- **User Name**
Enter the user name that will be used by the phone user.
- **User Password**
Enter the password for the phone user to be authenticated by the telephone system.
- **Password (repeat)**
Enter the password again.
- **Fist Name/Last Name/Display Name**
Enter the first, last and display names of the phone user.
- In addition, on the **Logical Groups** tab, specify logical groups for the phone user.
- On the **Custom Fields** tab, specify the desired values for the custom fields.

5.2.3.2 Setting DTMF codes

This section describes how to set DTMF Access and Deaccess codes in TRBOnet Dispatch Console.

- Go to **Administration** (1), **Phone Calls** (2), **Configuration** (3), **Configure** (4) and set **Access code** and **Deaccess code** (5) to **0** and **#**, respectively:

