

# TRBOnet Enterprise/PLUS Radio Allocation User Guide

Version 6.0

## USA Office

Neocom Software  
150 South Pine Island Rd., Suite 300  
Plantation, FL 33324, USA

## Sales

EMEA: +44 203 608 0598  
Americas: +1 872 222 8726  
APAC: +61 28 607 8325

[www.trbonet.com](http://www.trbonet.com)  
[info@trbonet.com](mailto:info@trbonet.com)

## Notices

This document is for informational purposes only. Neocom Software offers no warranties, express or implied, in this document.

Neocom and the Neocom logo, TRBOnet and the TRBOnet logo are either registered trademarks or trademarks of Neocom Software, Ltd.

MOTOROLA, MOTO, MOTOROLA SOLUTIONS and the Stylized M logo are trademarks or registered trademarks of Motorola Trademark Holdings, LLC.

Intellectual property rights protect the voice coding technology embodied in this product including patent rights, copyrights and trade secrets of Digital Voice Systems, Inc. This voice coding technology is licensed solely for use within this communications equipment. U.S. Pat. Nos. 6,199,037, 5,870,405, 5,754,974, 5,664,051, 5,630,011, 5,517,511, 5,491,772, 5,247,579, 5,226,108, 5,226,084, 5,216,747 and 5,081,681.

Microsoft, Windows, SQL Server and the .NET logo are either registered trademarks or trademarks of Microsoft Corporation in the United States and/or other jurisdictions.

Other product or company names mentioned herein may be trademarks of their respective owners.

© 2022 by Neocom Software, Ltd. All rights reserved.

This document was last revised on April 14, 2022.

## Contents

1	Introduction .....	1
1.1	About This Guide .....	1
1.2	About TRBOnet.....	1
1.3	Contacts.....	1
2	Overview.....	2
3	Taking/Returning Radios by Dispatcher .....	3
4	Taking/Returning Radio by Radio User .....	4
5	Radio Allocation Module .....	6
5.1	Configuring TRBOnet Dispatch Console .....	6
5.1.1	Custom Fields .....	6
5.1.2	Logical Groups .....	6
5.1.3	Users .....	7
5.1.4	Radios.....	9
5.2	Connecting Barcode Scanner.....	11
6	Reports .....	13
6.1	Radio Allocation.....	13
6.2	Checked Out Radios.....	14

## 1 Introduction

### 1.1 About This Guide

This document is intended for administrators setting up evaluation and proof-of-concept deployments of MOTOTRBO Dispatch over IP solutions. The document describes how to use the Radio Allocation feature in the TRBOnet Enterprise software.

### 1.2 About TRBOnet

TRBOnet is a suite of professional applications for MOTOTRBO digital two-way radio networks. TRBOnet manages voice and data communication paths across network endpoints. It provides a unified graphical dispatcher workbench interface for the entire range of workforce fleet management tasks.

For more information about TRBOnet products, refer to our [website](#).

### 1.3 Contacts

Region	Phone	Email & Support
EMEA	+44 203 608 0598	<a href="mailto:info@trbonet.com">info@trbonet.com</a> — general and commercial inquiries
Americas	+1 872 222 8726	<a href="mailto:support@trbonet.com">support@trbonet.com</a> — technical support
APAC	+61 28 607 8325	<a href="https://trbonet.com/kb/">https://trbonet.com/kb/</a> — online knowledge base

## 2 Overview

The TRBOnet Radio Allocation feature is used to check out/check in (allocate/reallocate) radios to selected employees. This can be done either by the dispatcher in the Dispatch Console application, or by the radio user directly from the radio.

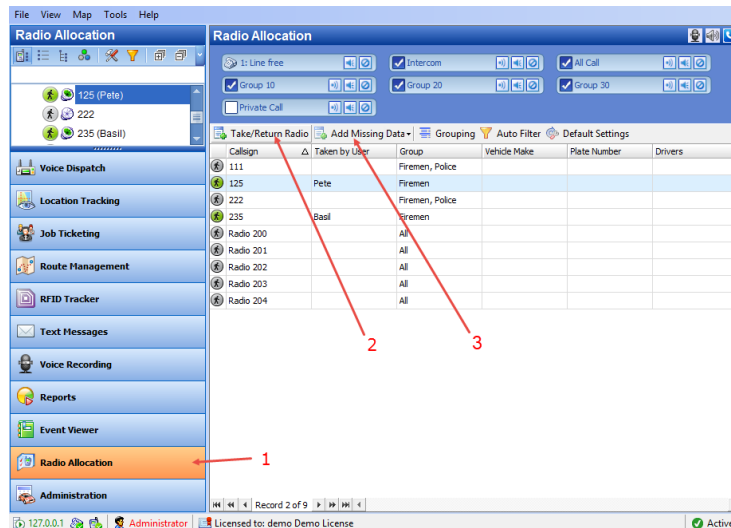
In addition, the Radio Allocation module can be used to automate checking out/checking in (allocating/reallocating) radios using 'Honeywell Xenon 1900' barcode scanners. The automatic check-in/check-out procedure is quite easy and fast. The user first scans the radio's barcode and then scans their own badge. If the user is authorized, they can check out/check in the radio.

## 3 Taking/Returning Radios by Dispatcher

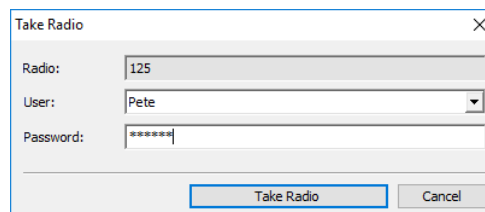
This section describes how to allocate/reallocate (take/return) radios to users by the dispatcher in TRBOnet Dispatch Console.

### 3.1 Taking/Returning Radio

- Click the **Radio Allocation** tab (1):



- Select the radio in the list and click the **Take/Return Radio** button (2):



- Radio**  
 This box displays the selected radio.
- User**  
 From the drop-down list, select the user to allocate (check out) the radio to.
- Password**  
 Enter the password for the selected user.
- Click the **Take Radio** button to assign the radio to the selected user.

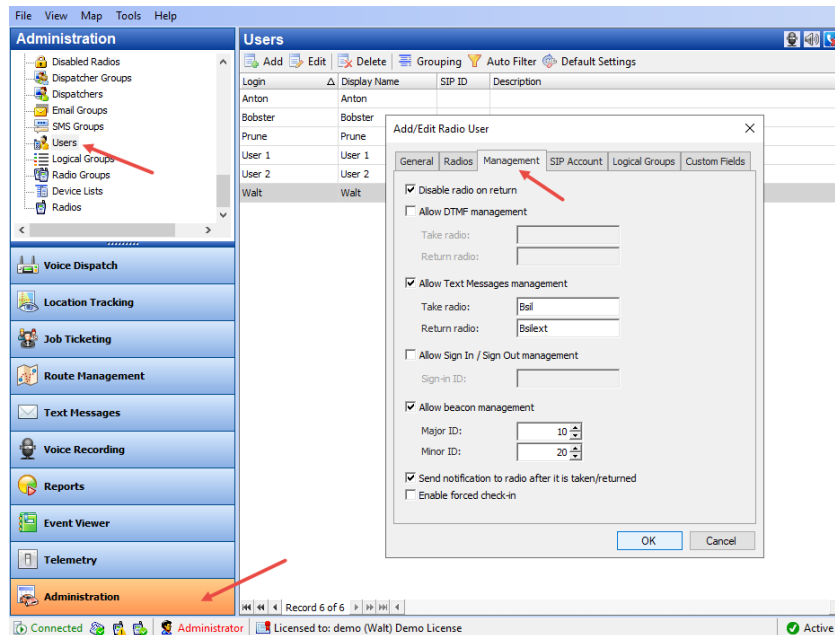
Note: The radio is returned (checked in) by the dispatcher in a similar way.

## 4 Taking/Returning Radio by Radio User

This section describes how to appropriately configure the radio user in TRBOnet Dispatch Console so that a radio can be allocated/reallocated (taken/returned) by the radio user directly from the radio.

### 4.1 Configuring Radio User

- Go to **Administration, Users** to add/edit/delete users in the system.



- Click either **Add** to add a user to the system, or **Edit** to edit the selected user.
- Switch to the **Management** tab and specify the following parameters:
  - Disable radio on return**  
Select this option so that a radio will be disabled after the users returns it.
  - Allow DTMF management**  
Select this option to allow taking/returning radios by sending the specified DTMF tones.
    - Take radio**  
Specify DTMF tones to be sent by the user to take a radio.
    - Return radio**  
Specify DTMF tones to be sent by the user to return a radio.
  - Allow Text Messages management**  
Select this option to allow taking/returning radios by sending specified text messages.

- **Take radio**  
Specify the text of the message to be sent by the user to take a radio.
  - **Return radio**  
Specify the text of the message to be sent by the user to return a radio.
  - **Allow Sign In / Sign Out management**  
Select this option to allow taking radios when the user signs in to a radio.
    - **Sign-in ID**  
Specify the password that the user enters to sign in when they take a radio.
  - **Allow beacon management**  
Select this option and enter **Major ID** and **Minor ID** of the beacon that will be used for taking/returning radios. When a radio enters/leaves the range of the specified beacon, this radio will be considered taken/returned by the user.
- Note: This functionality is available only if the radio is equipped with an option board.
- **Send notification to radio after it is taken/returned**  
Select this option so that a notification is sent to a radio every time the user takes/returns it.
  - **Enable forced check-in**  
This option affects the Radio Allocation module. If enabled, the user will be able to return any radio, regardless of whether who has taken the radio.



## 5 Radio Allocation Module

This section describes how to configure the TRBOnet Dispatch Console and TRBOnet One applications so that the Radio Allocation module can be used to automate checking out/checking in (allocating/reallocating) radios using 'Honeywell Xenon 1900' barcode scanners.

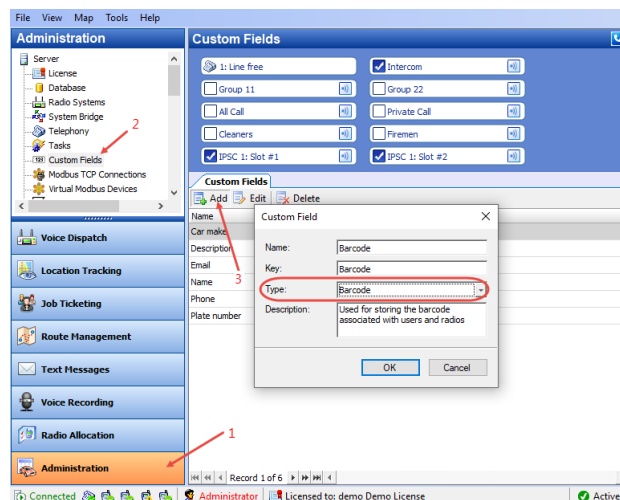
### 5.1 Configuring TRBOnet Dispatch Console

This section describes how to appropriately configure the users and radios in TRBOnet Dispatch Console.

#### 5.1.1 Custom Fields

This section describes how to add a custom field of the Barcode type.

- Go to **Administration** (1), **Custom Fields** (2)

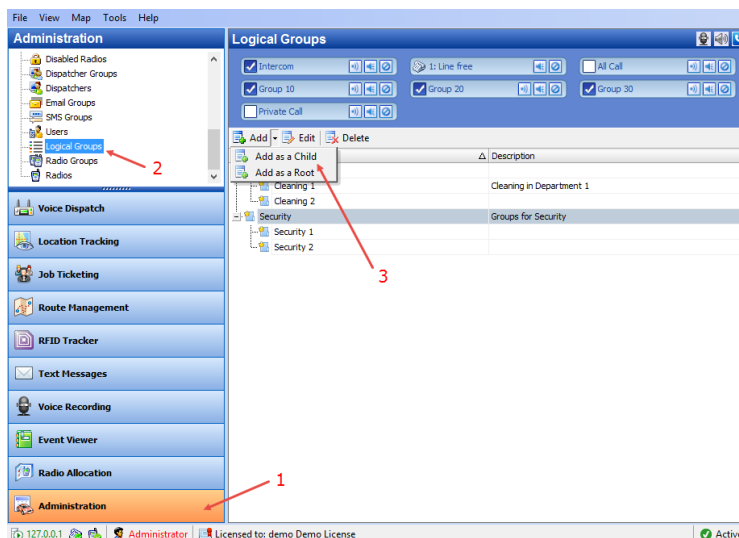


- Click the **Add** button (3).
- In the **Custom Field** dialog box, specify the parameters of the field, making sure that the Type value is **Barcode**.

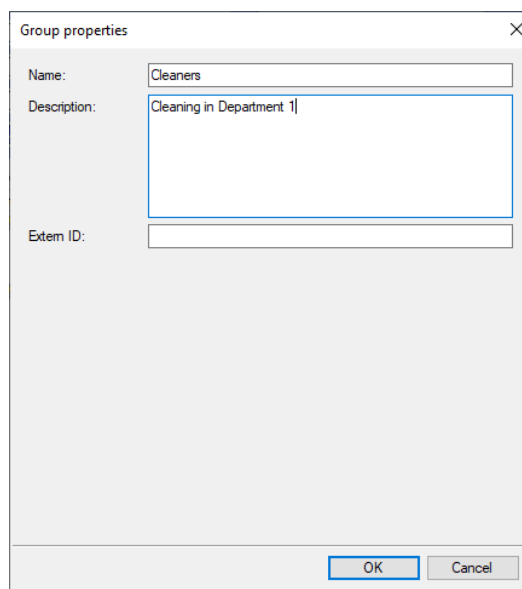
#### 5.1.2 Logical Groups

This section describes how to create logical groups. You must create at least one logical group that will be common to both the User and Radio so that the User will be able to check out that Radio.

- Go to **Administration** (1), **Logical groups** (2):



- Click **Add** (3) to add a logical group.
  - Select **Add as a Root** to add a logical group as a root folder.
  - Select **Add as a Child** to add a logical group as a child folder.

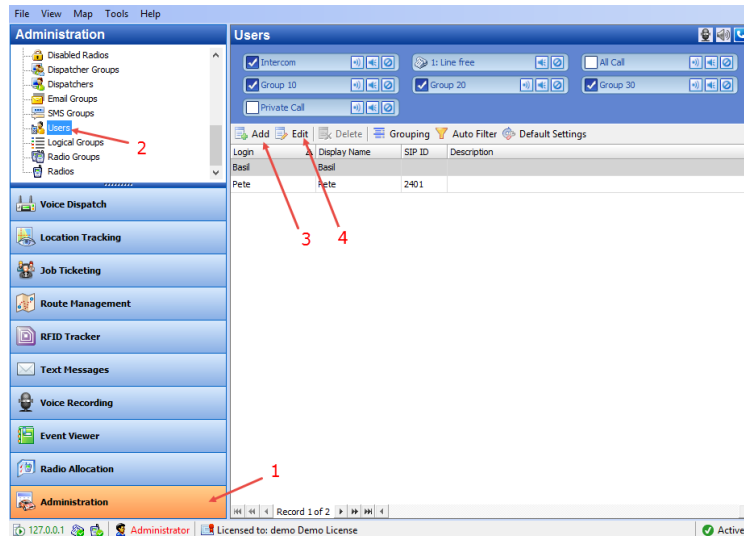


- Specify a **Name** and **Description** for the logical group.
- Click **OK** to add the logical group.

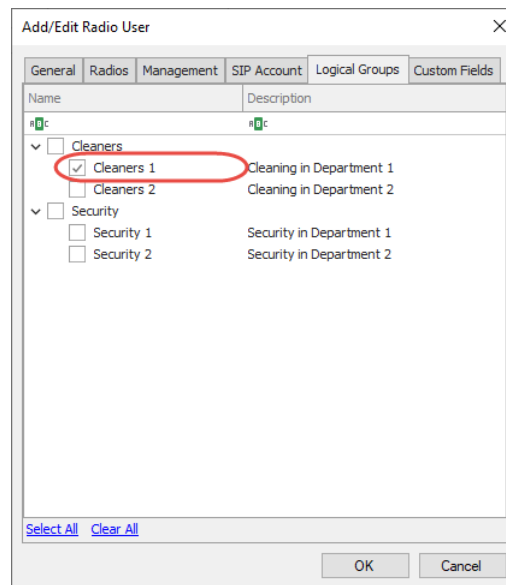
## 5.1.3 Users

This section describes to appropriately configure the user so that they can check out radios.

- Go to **Administration** (1), **Users** (2) to add/edit/delete users in the system:



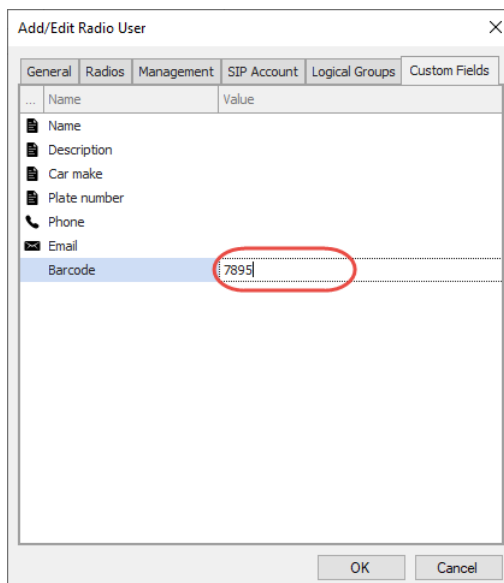
- Click either **Add** (3) to add a user to the system, or **Edit** (4) to edit the selected user:
- In the dialog box that opens, go to the **Logical Groups** tab.



- Make sure that at least one logical group is selected.

Note: This logical group must be common with the radio's logical group so that the user will be able to check out that radio.

- Go to the **Custom Fields** tab.



The 'Add/Edit Radio User' dialog box has tabs for General, Radios, Management, SIP Account, Logical Groups, and Custom Fields. The General tab is active, showing fields for Name, Description, Car make, Plate number, Phone, Email, and Barcode. The Barcode field is highlighted with a red circle and contains the value '7895'.

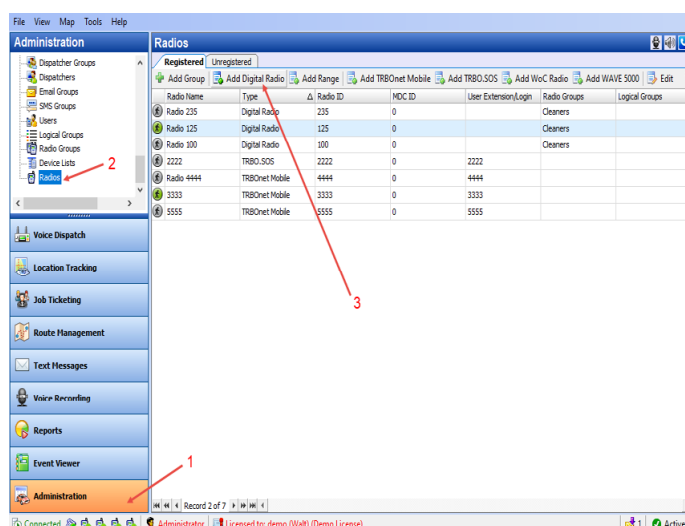
- Make sure that the Barcode field is populated with a unique value identifying the user.

Note: Print this value as a barcode and keep as the user's badge.

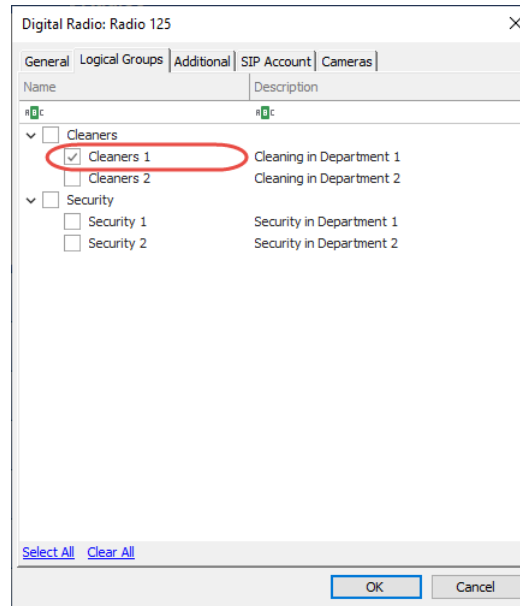
## 5.1.4 Radios

This section describes to appropriately configure the radio so that it can be checked out to users.

- Go to **Administration (1)**, **Radios (2)**.



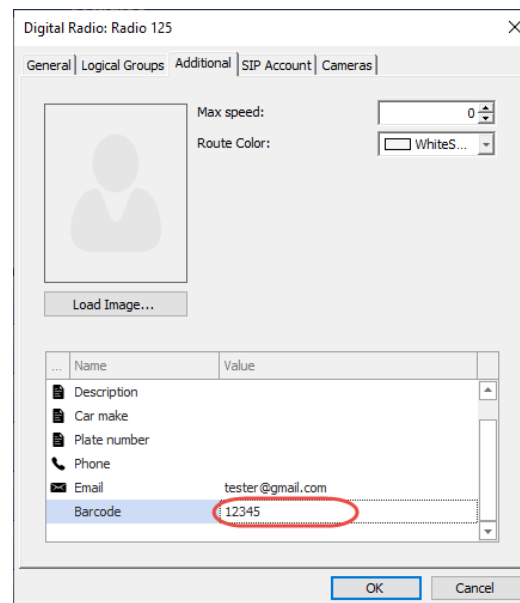
- Click **Add Digital Radio (3)** to add a new radio or double-click the selected radio.
- In the dialog box that opens, go to the **Logical Groups** tab.



- Make sure that at least one logical group is selected.

Note: This logical group must be common with the user's logical group so that that user will be able to check out the radio.

- Go to the **Custom Fields** tab.



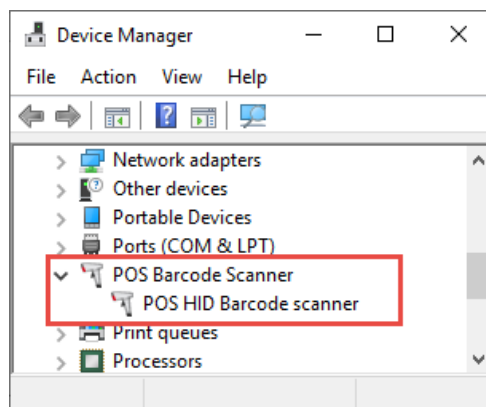
- Make sure that the Barcode field is populated with a unique value identifying the radio.

Note: Print this value as a barcode and keep as the radio's barcode.

## 5.2 Connecting Barcode Scanner

This section describes how to connect and configure a barcode scanner.

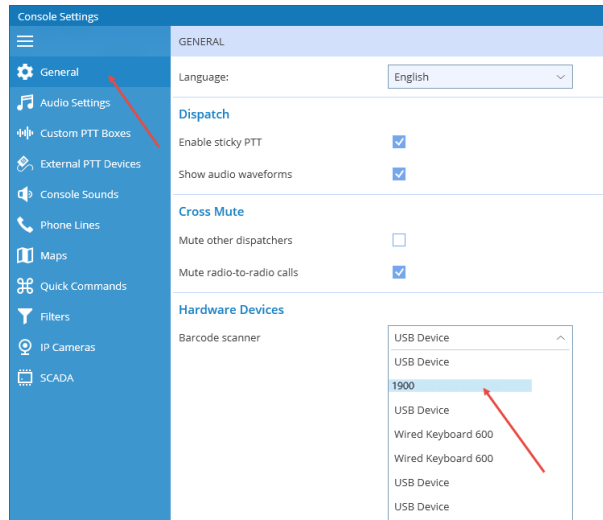
- Connect the barcode scanner to a PC via the USB cable and see it displayed in the Device Manager as a "POS HID Barcode scanner".



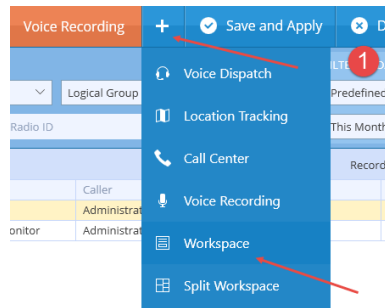
Note: If you don't see the barcode scanner as a HID device, scan the barcode below to appropriately program the scanner (see also the user manual at <https://www.honeywellaidc.com/-/media/en/files-public/technical-publications/barcode-scanners/xenon/xenon-ug.pdf>):



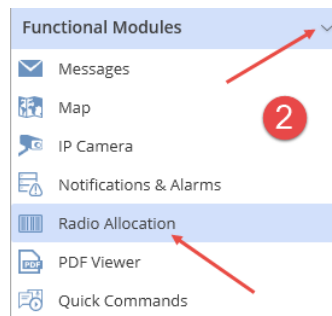
- Run the TRBOnet One application.
- Go to **Console Settings > General > Hardware Devices > Barcode scanner**.
- From the drop-down list, select **1900**.



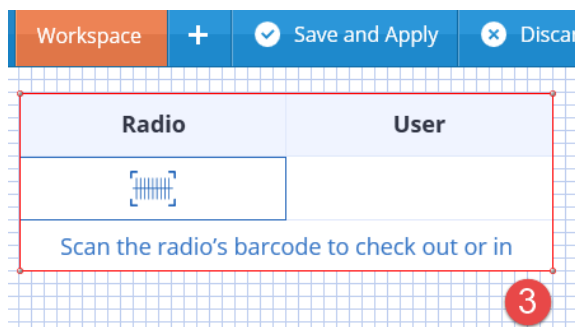
- Add a **Workspace** tab (1).



- In the right pane, go to **Functional Modules > Radio Allocation** (2).



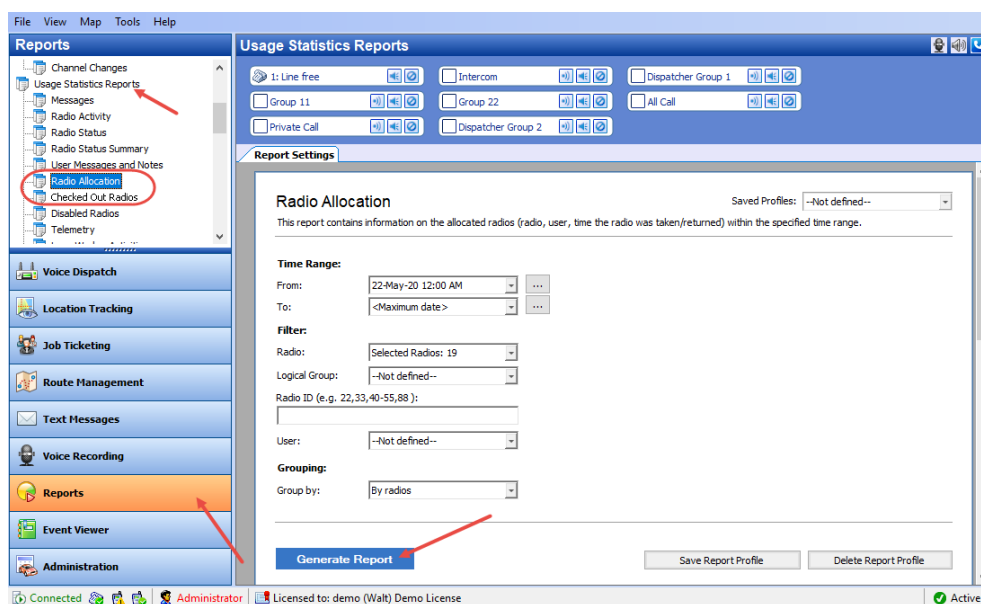
- Drag it to the newly created workspace (3).



## 6 Reports

The administrator/dispatcher can generate reports on the allocated radios and checked out radios.

- Click the **Reports** tab, and in the **Reports** pane, select **Usage Statistics Reports > Radio Allocation** or **Checked Out Radios**:
- Enter the required report parameters and click **Generate Report**.



### 6.1 Radio Allocation

This report contains information on the allocated radios (radio, user, time the radio was taken/returned) within the specified time range.

#### Filter

- **Radio**  
In the list, select the desired radio(s).
- **Logical Group**  
In the list, select the logical group(s).
- **Radio ID**  
Enter a Radio ID or multiple Radio IDs of the radio(s) whose information to include in the report.
- **User**  
From the list, select the user whose information to include in the report.

#### Grouping

- **Group by**  
From the list, select how to group records in the report, by radios or by users.



## 6.2 Checked Out Radios

This report contains information on the radios that were checked out (taken) and not checked in (returned) during the specified time period.

### Filter

- **Radio**  
In the list, select the desired radio(s).
- **Logical Group**  
In the list, select the logical group(s).
- **Radio ID**  
Enter a Radio ID or multiple Radio IDs of the radio(s) whose information to include in the report.
- **User**  
In the list, select the user(s) whose information to include in the report.