

TRBOnet

Swift Footswitch P001

User Guide



USA Office

Neocom Software
150 South Pine Island Rd., Suite 300
Plantation, FL 33324, USA

Sales

EMEA: +44 203 608 0598
Americas: +1 872 222 8726
APAC: +61 28 607 8325

www.trbonet.com
info@trbonet.com

Notices

This document is for informational purposes only. Neocom Software offers no warranties, express or implied, in this document.

Neocom and the Neocom logo, TRBOnet and the TRBOnet logo are either registered trademarks or trademarks of Neocom Software, Ltd.

MOTOROLA, MOTO, MOTOROLA SOLUTIONS and the Stylized M logo are trademarks or registered trademarks of Motorola Trademark Holdings, LLC.

Intellectual property rights protect the voice coding technology embodied in this product including patent rights, copyrights and trade secrets of Digital Voice Systems, Inc. This voice coding technology is licensed solely for use within this communications equipment. U.S. Pat. Nos. 6,199,037, 5,870,405, 5,754,974, 5,664,051, 5,630,011, 5,517,511, 5,491,772, 5,247,579, 5,226,108, 5,226,084, 5,216,747 and 5,081,681.

Microsoft, Windows, SQL Server and the .NET logo are either registered trademarks or trademarks of Microsoft Corporation in the United States and/or other jurisdictions.

Other product or company names mentioned herein may be trademarks of their respective owners.

© 2022 by Neocom Software, Ltd. All rights reserved.

This document was last revised on April 14, 2022.

Contents

1	Introduction	1
1.1	Technical features	1
2	Configuration in TRBOnet Enterprise	2
2.1	Connecting via COM-port	2
2.2	Connecting via USB-port	4
2.3	Connecting via USB-port using M002 adapter	5
2.4	Associating with PTT boxes	7

1 Introduction

The **TRBOnet Swift Footswitch P001** (hereinafter "footswitch") allows the dispatcher to push and release the PTT button while their hands are free. There are three design versions of the footswitch: with RS-232, RJ-45, or USB connectors.



1.1 Technical features

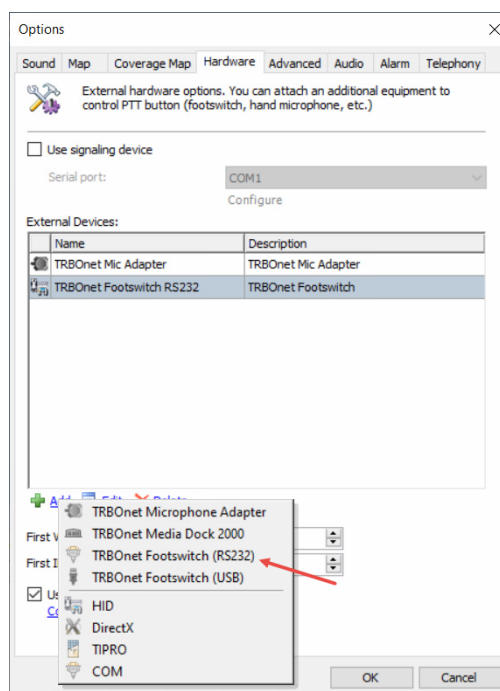
- Plug connection: RS-232, RJ-45, or USB
- Connector cable: 1,8 m
- Dimensions: 78/103/39 mm
- Weight: 250 g
- Material: plastic
- Color: black

2 Configuration in TRBOnet Enterprise

2.1 Connecting via COM-port

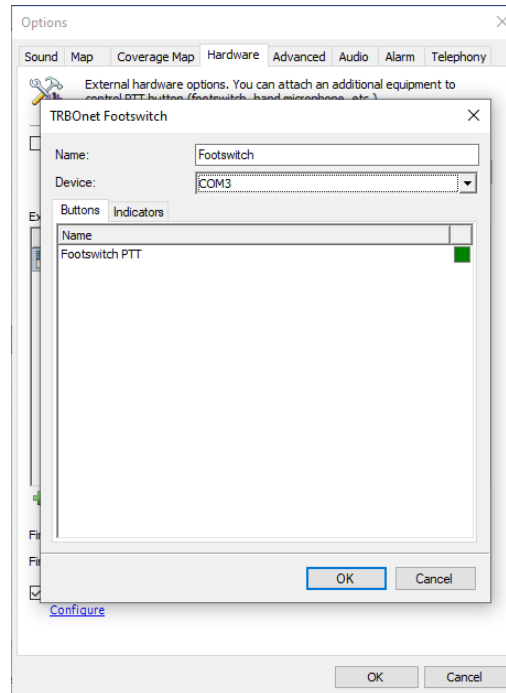
This section describes how to connect the footswitch to the PC via a COM-port and configure required parameters in TRBOnet Dispatch Console.

- Connect the footswitch to the PC via a COM-port.
- Run TRBOnet Dispatch Console.
- On the **Tools** menu, click **Options**.
- In the **Options** dialog box, select the **Hardware** tab.



- In the **External Devices** section, click the **Add** link and from the drop-down menu select **TRBOnet Footswitch (RS232)**.

The **TRBOnet Footswitch** dialog box appears on top of the **Options** dialog box.

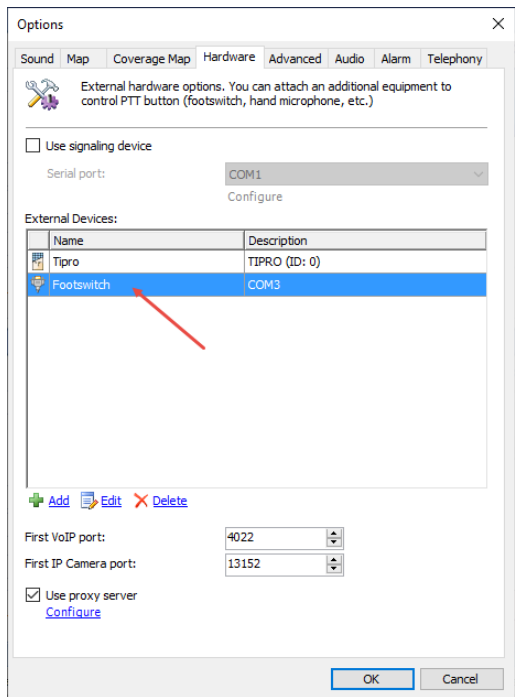


- **Name**
Enter the name of the footswitch device.
- **Device**
From the drop-down list, select **COM3**.
The **Footswitch PTT** button appears in the table below.
- Press the footswitch button and see if the indicator box becomes green. Release the footswitch button and see if the indicator box returns to red.

Note: If pressing the footswitch button doesn't change the indicator's color to green, try toggling the polarity inversion switch.

- Click **OK**.

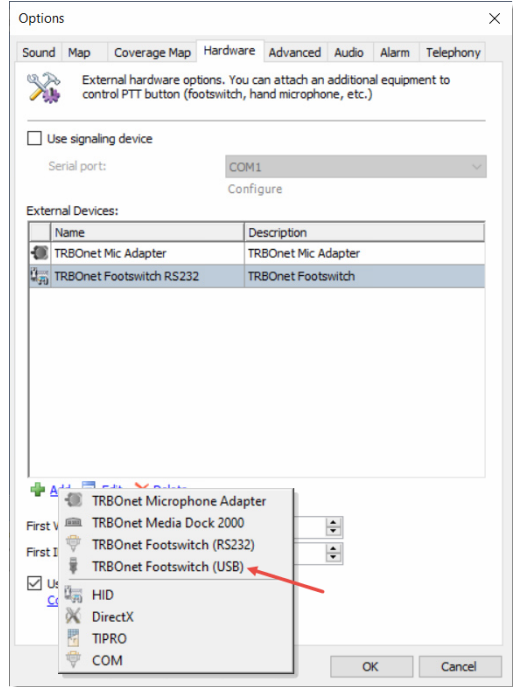
As a result, the footswitch device will appear in the list of External Devices.



2.2 Connecting via USB-port

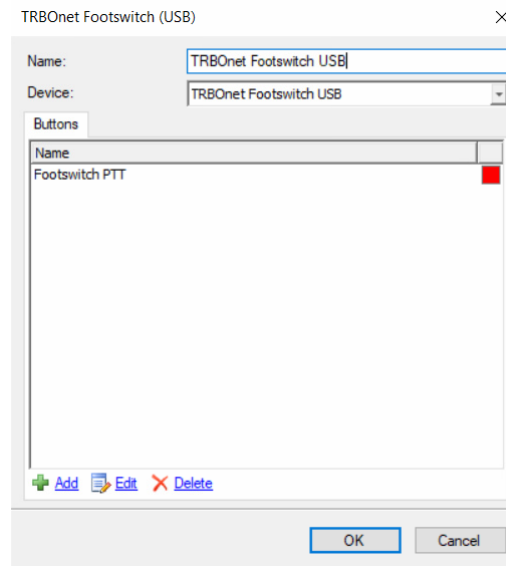
This section describes how to connect the footswitch to the PC via a USB-port and configure required parameters in TRBOnet Dispatch Console.

- Connect the footswitch to a USB-port of the PC.
- Run TRBOnet Dispatch Console.
- On the **Tools** menu, click **Options**.
- In the **Options** dialog box, select the **Hardware** tab.



- In the **External Devices** section, click the **Add** link and from the drop-down menu select **TRBOnet Footswitch (USB)**.

The **TRBOnet Footswitch** dialog box appears on top of the **Options** dialog box.



- **Name**
Enter the name of the footswitch device.
- **Device**
From the drop-down list, select **TRBOnet Footswitch USB**.
The **Footswitch PTT** button appears in the table below.
- Press the footswitch button and see if the indicator box becomes green. Release the footswitch button and see if the indicator box returns to red.

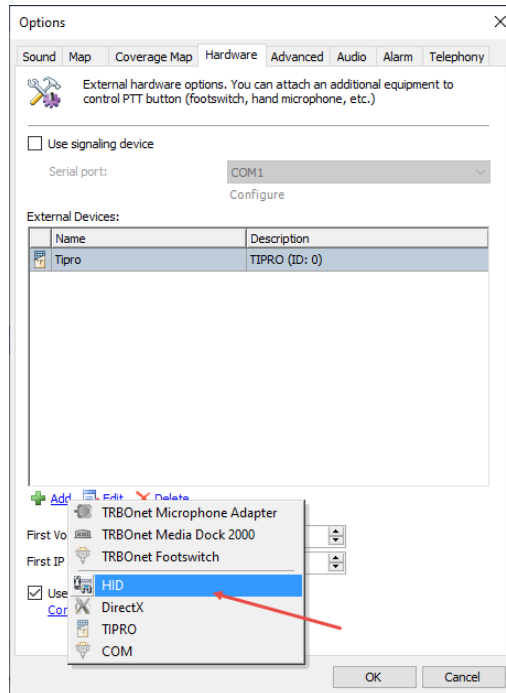
Note: If pressing the footswitch button doesn't change the indicator's color to green, try toggling the polarity inversion switch.

- Click **OK**.

2.3 Connecting via USB-port using M002 adapter

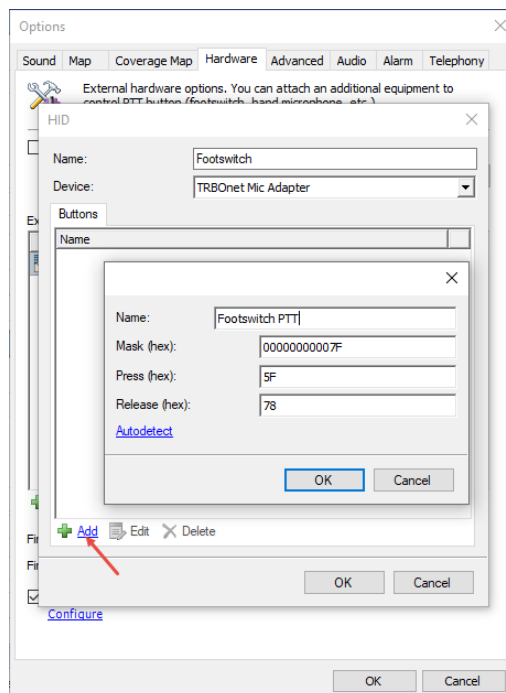
You can also connect a footswitch with RJ-45 connector to the PC via a USB-port by using an additional TRBOnet Swift Adapter M002 (hereinafter, "M002 adapter").

- Connect the footswitch to a USB-port of the PC by using the M002 adapter.
- Run TRBOnet Dispatch Console.
- On the **Tools** menu, click **Options**.
- In the **Options** dialog box, select the **Hardware** tab.



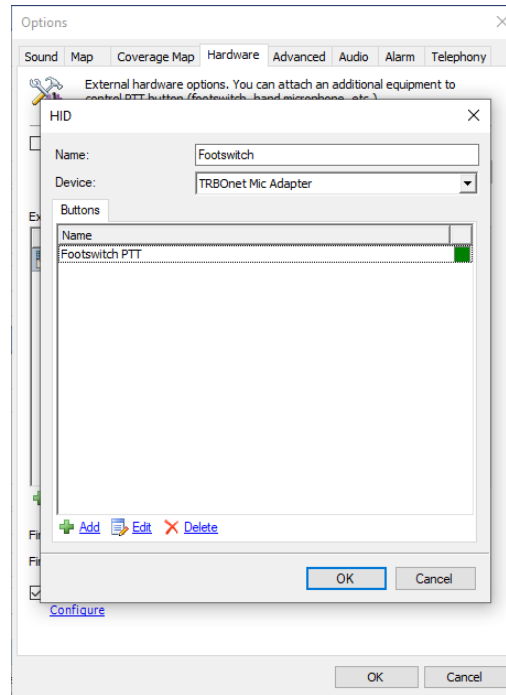
- In the **External Devices** section, click the **Add** link and from the drop-down menu select **HID**.

The **HID** dialog box appears on top of the **Options** dialog box.



- Click the **Add** link.
 - One more dialog appears on top:
 - **Name**
Enter the name of the button.

- **Autodetect**
Click this link and press the footswitch button. See if the other fields (Mask, Press, and Release) get populated with the appropriate hex values.
- Click **OK**.
As a result, the footswitch button will appear in the list of buttons in the **HID** dialog box.



- ✓ Press the footswitch button and see if the indicator box becomes green. Release the footswitch button and see if the indicator box returns to red.

Note: If pressing the footswitch button doesn't change the indicator's color to green, try toggling the polarity inversion switch.

2.4 Associating with PTT boxes

- In the **Radio Interface** pane, right-click on a PTT box for which you want to use the TRBOnet footswitch, and on the context menu, select **Specify External PTT > [Device Name]**.

