

# TRBOnet Web Console User Guide

Version 6.1

## USA Office

Neocom Software  
150 South Pine Island Rd., Suite 300  
Plantation, FL 33324, USA

## Sales

EMEA: +44 203 608 0598  
Americas: +1 872 222 8726  
APAC: +61 28 607 8325

[www.trbonet.com](http://www.trbonet.com)  
[info@trbonet.com](mailto:info@trbonet.com)

## Notices

This document is for informational purposes only. Neocom Software offers no warranties, express or implied, in this document.

Neocom and the Neocom logo, TRBOnet and the TRBOnet logo are either registered trademarks or trademarks of Neocom Software, Ltd.

MOTOROLA, MOTO, MOTOROLA SOLUTIONS and the Stylized M logo are trademarks or registered trademarks of Motorola Trademark Holdings, LLC.

Intellectual property rights protect the voice coding technology embodied in this product including patent rights, copyrights and trade secrets of Digital Voice Systems, Inc. This voice coding technology is licensed solely for use within this communications equipment. U.S. Pat. Nos. 6,199,037, 5,870,405, 5,754,974, 5,664,051, 5,630,011, 5,517,511, 5,491,772, 5,247,579, 5,226,108, 5,226,084, 5,216,747 and 5,081,681.

Microsoft, Windows, SQL Server and the .NET logo are either registered trademarks or trademarks of Microsoft Corporation in the United States and/or other jurisdictions.

Other product or company names mentioned herein may be trademarks of their respective owners.

© 2022 by Neocom Software, Ltd. All rights reserved.

This document was last revised on August 15, 2022.

## Contents

1	Introduction .....	1
1.1	About This Guide .....	1
1.2	About TRBOnet Web Console.....	1
1.3	About TRBOnet by Neocom Software .....	1
2	Installation .....	2
2.1	Installing Web Console .....	2
3	Configuration.....	7
3.1	Configuring Web Console.....	7
4	Operation .....	9
4.1	Connecting to TRBOnet Server .....	9
4.2	Radio List.....	10
4.2.1	Disabling a radio.....	11
4.3	Map.....	11
4.3.1	Map Layers.....	11
4.3.2	Zoom In/Out.....	11
4.3.3	Radio Coordinates and Address .....	12
4.3.4	Filter Radios .....	12
4.3.5	Search by address .....	13
4.3.6	Text Messages .....	13
4.4	Job Ticketing.....	14
4.4.1	Add a Job Ticket .....	14
4.4.2	Assign a Job Ticket.....	15
4.5	Reports .....	15
4.6	Alarms.....	16

## 1 Introduction

### 1.1 About This Guide

This document is intended for MOTOTRBO radio network administrators responsible for the dispatch operations. It provides guidance on the installation, configuration, and maintenance of the **TRBOnet Web Console** application.

### 1.2 About TRBOnet Web Console

TRBOnet Web Console is a special online application. It is an extension for TRBOnet Dispatch Software which allows dispatchers to get access to the system via a Web browser. The Web Console is the best solution for carriers, operators and systems with a huge number of users.

This application allows you to monitor your system without any special software installed on your computer.

### 1.3 About TRBOnet by Neocom Software

TRBOnet is a suite of professional applications for dispatch centers of MOTOTRBO™ radio networks developed by Neocom Software since 2008. TRBOnet manages voice, text and data communication paths to network endpoints and provides a unified graphical dispatcher workbench interface for all the messaging and workforce orchestration tasks. Recognized as the Best Radio Application Partner by Motorola Solutions, TRBOnet enjoys a proven track record of success in business-critical radio network deployments worldwide.

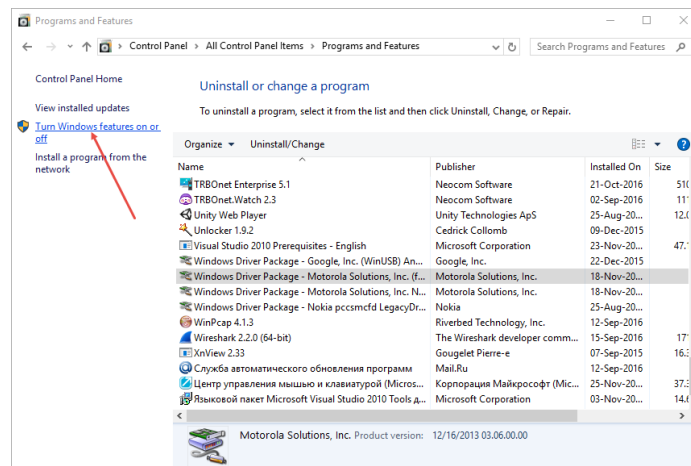
The TRBOnet family of products deliver:

- Flexible, connection type independent cross-patching of subscriber groups, both preconfigured by network designers and improvised by dispatchers with a drag-and-drop ease.
- Extensive connectivity options for any mode MOTOTRBO networks with public phone, SIP and private VoIP interconnects, SMS and email gateways, intercom among multiple dispatchers.
- Comprehensive location awareness features which include integration with a variety of online and offline map providers, indoor positioning, geofencing, route and speed control and GPS event-driven workflows.
- Support for communication scenarios typical for key vertical markets, such as 'lone worker' monitoring, site alarms, job ticketing, RFID integration, field device telemetry collection and many others.
- Full audio and activity logging complemented by a rich set of configurable built-in reports.

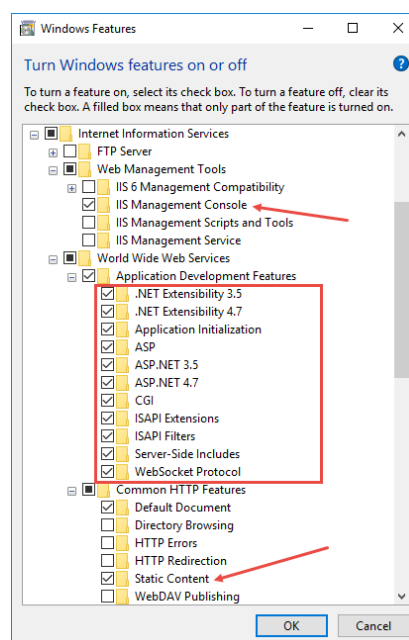
## 2 Installation

### 2.1 Installing Web Console

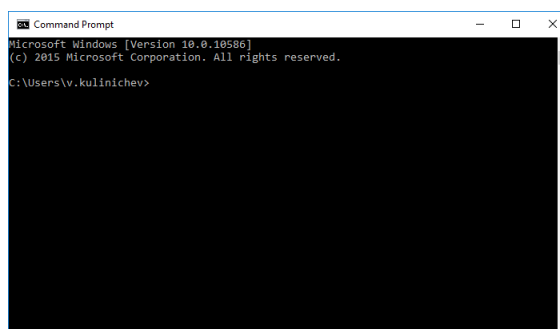
- Click **Start>Control Panel>Programs and Features**.
- Click the **Turn Windows features on or off** link.



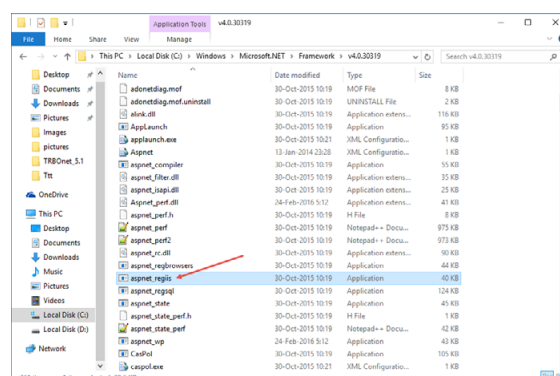
- In the **Windows Features** dialog box, expand **Internet Information Services**:
  - Expand **Web Management Tools** and make sure that **IIS Management Console** is selected.
  - Go to **World Wide Web Services>Application Development Features** and make sure all of them are selected.
  - In addition, expand **Common HTTP Features** make sure that **Static Content** is selected.



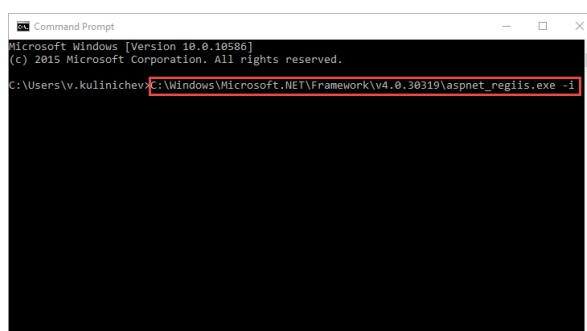
- Restart your PC.
- Click **Start>All Programs>Accessories>Command Prompt**.



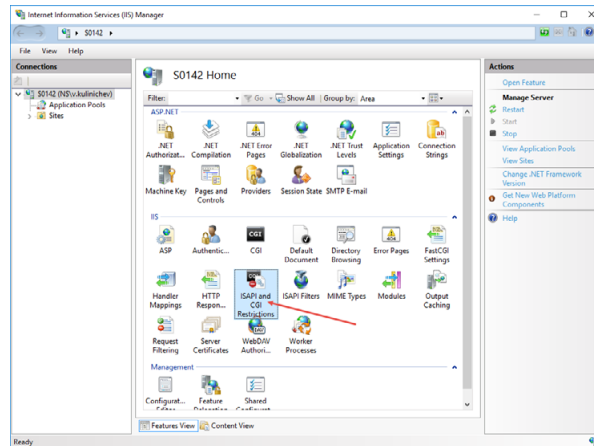
- For 32-bit systems:  
Go to **This PC>Local Disk (C: )> Windows > Microsoft.NET > Framework > v4.0.30319/aspnet\_regiis**.
- For 64-bit systems:  
Go to **This PC>Local Disk (C: )> Windows > Microsoft.NET > Framework64 > v4.0.30319/aspnet\_regiis**.



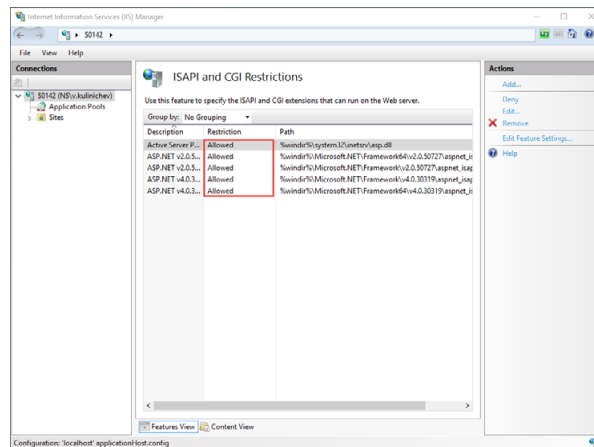
- Drag the **aspnet\_regiis** file into the **Command Prompt** then press the space bar and add the **-i** key. Then press the **Enter** key:



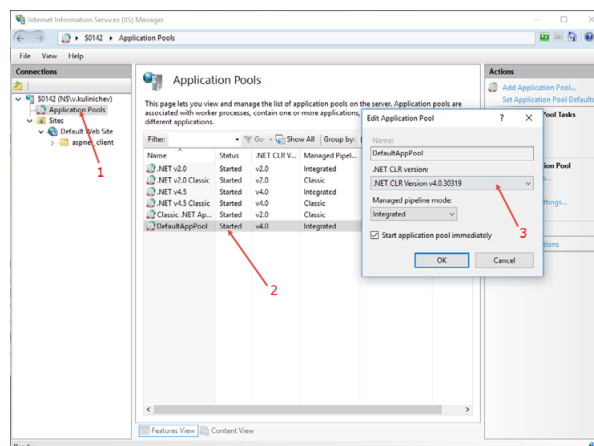
- Go to **Control Panel > Administrative Tools**.
- Double-click the **Internet Information Services (IIS) Manager** shortcut and double-click **ISAPI and CGI Restrictions**.



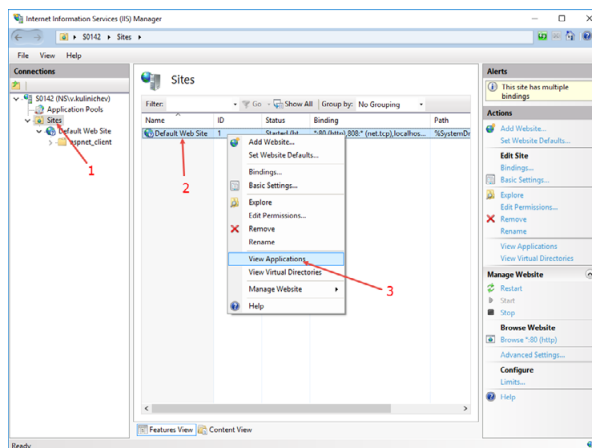
- In the **Restriction** column, set **Allowed** in all lines.



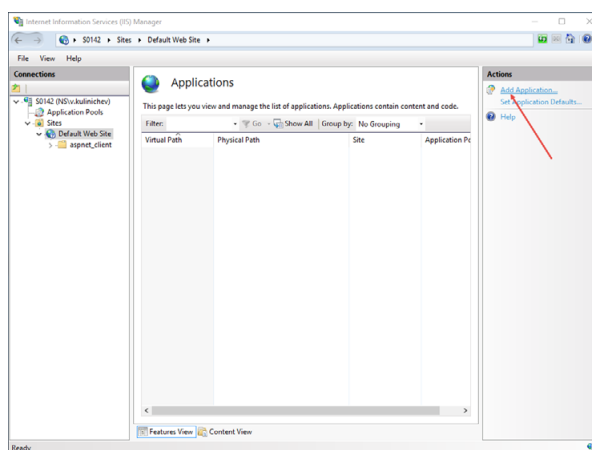
- Copy the Web Site archive **WebConsole** to **Computer > Local Disc (C:) > inetpub** to create a folder for the Web Console.
- Go to **Application Pools** (1). Double-click **DefaultAppPool** (2) and check the **.Net CLR Version** (3):



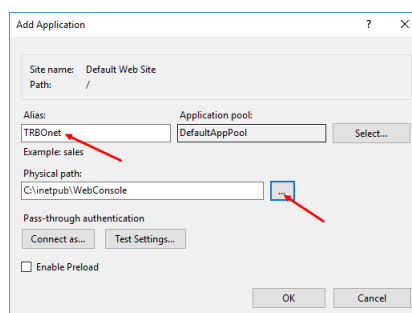
- Click **Sites** (1), right-click **Default Web Site** (2) and choose **View Applications** (3):



- Click the **Add Application** link.

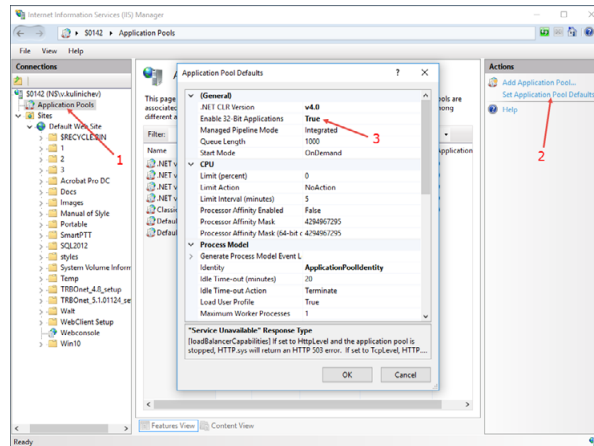


- Specify the **Alias** and **Physical path** for the application:



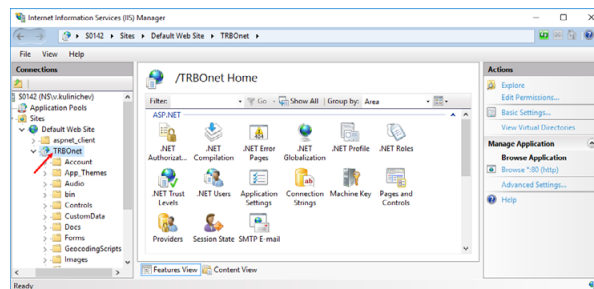
- Browse for the folder with unarchived Web Console.
- Click **OK**.
- Select **Application Pools** (1) and click the **Set Application Pool Defaults** link (2):





- Set **Enable 32-Bit Applications** to True (3).

The Web Console will be added as an application to under the Default Web Site:

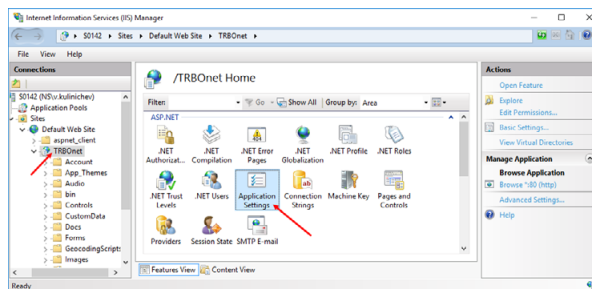


Note: Make sure your account has sysadmin privileges.

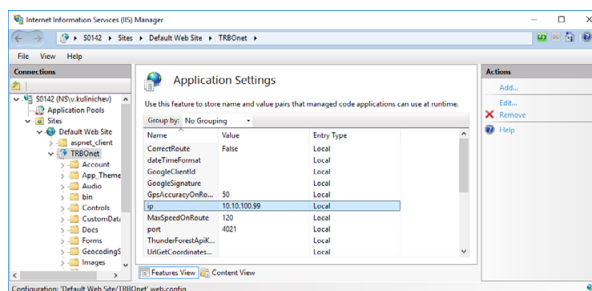
## 3 Configuration

### 3.1 Configuring Web Console

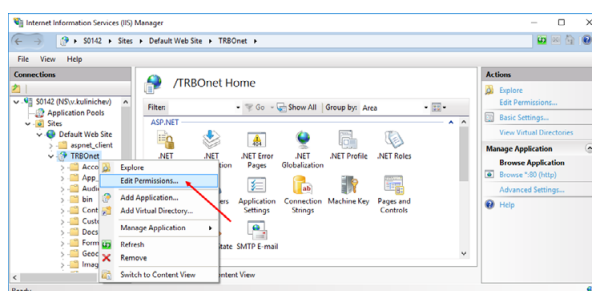
- If TRBOnet Server is not installed on the PC, select the application and double-click **Application Settings**:



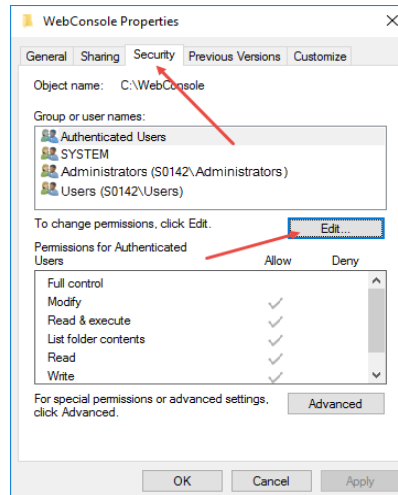
- Specify the **IP address** and **Port** of the PC with installed TRBOnet Server:



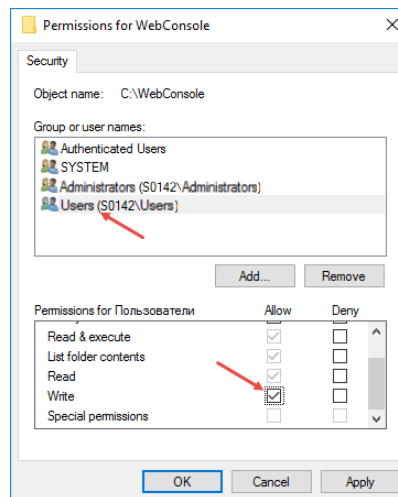
- Right click **TRBOnet Web Console** and choose **Edit Permissions**.



- Click the **Security** tab and then click the **Edit** button to edit permissions:



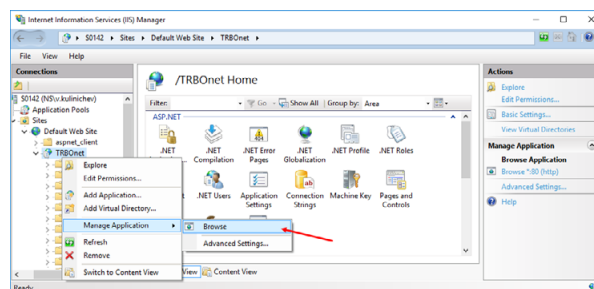
- Select **User** in the Users list. In the **Allow** column, select **Write**:



- Click **Apply**.
- Click **OK**.

To open TRBOnet Web Console:

- Go to **Internet Information Services (IIS) Manager > Connections > Sites > Default Web Site > TRBOnet**
- Right-click it and choose **Manage Application > Browse**.



TRBOnet Web Console is now ready for operation.

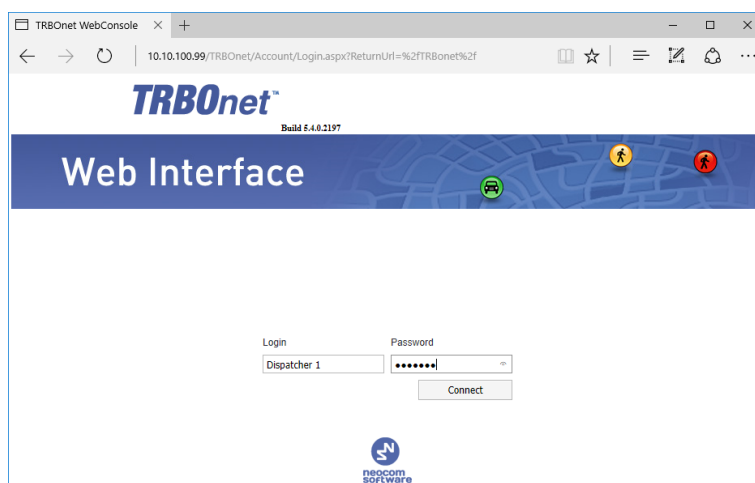
## 4 Operation

### 4.1 Connecting to TRBOnet Server

- Launch the browser.
- In the browser's address bar, enter the IP address of the PC with the installed TRBOnet Web Console, and the path (for example, *10.10.100.99/TRBOnet*).

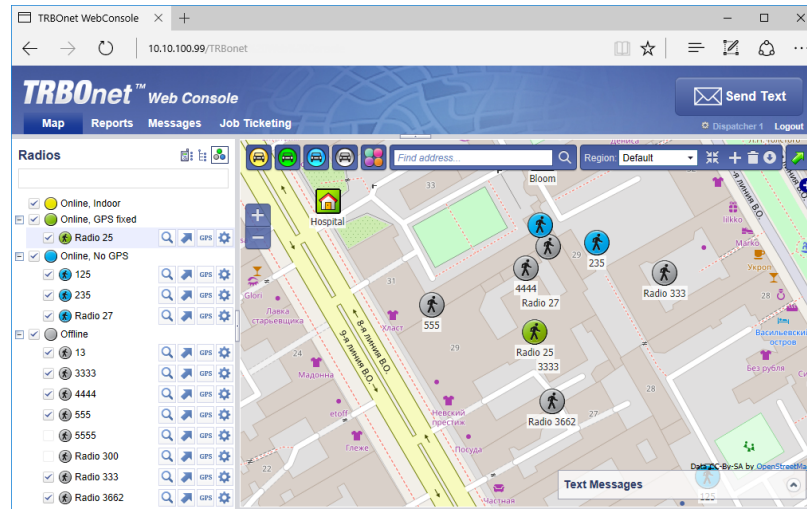
Note: For the path, see section [2, Installation, IIS Manager>Add Application>Alias](#)

As a result, the TRBOnet Login page will open:



- **Login**  
Enter the User Name registered in the TRBOnet Dispatch Console Users list.
- **Password**  
Enter the user password.
- Click **Connect**.


Once you have connected to TRBOnet Server, you will see a window like this.

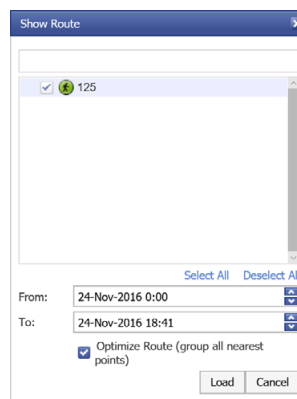


## 4.2 Radio List


The Radio List pane is located on the left and contains the list of radios. From this pane, you can perform the following tasks.

Click the  button to see the selected radio in the center of the map.


Click the  button to display a route traveled by the selected radio on the map.

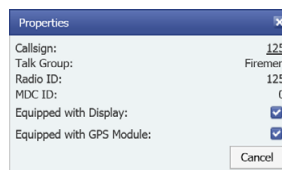


Specify the **From** and **To** date and time. Select the **Optimize Route** option to group all points in a 100 meter radius.

Click the  button to request a location of the selected radio.



Click the  button to display the selected radio properties.



## 4.2.1 Disabling a radio

To disable a radio:

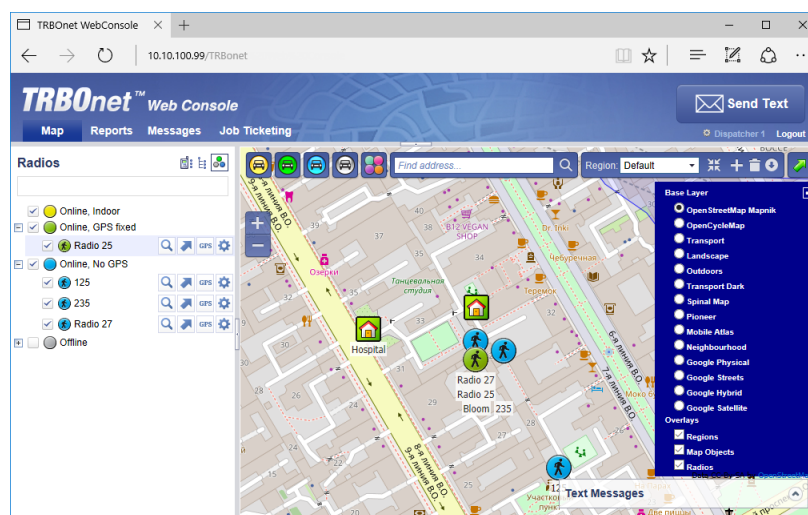
- Right-click the desired radio in the Radio List pane.
- In the shortcut menu that opens, click **Disable**.
- Enter the **Reason** and click **OK**.

Note: The dispatcher can disable a radio when they have relevant Access Rights.

## 4.3 Map

### 4.3.1 Map Layers

- Click the small plus button on the right of the Map pane.
- Choose the map layer to display in the Map pane.
- In the Overlays list, select whether to display Regions, Map Objects and Radios on the map. Just select/deselect the corresponding check box.



### 4.3.2 Zoom In/Out

- Click the large plus button on the left of the Map pane to zoom in the map.
- Click the large minus button on the left of the Map pane to zoom out the map.

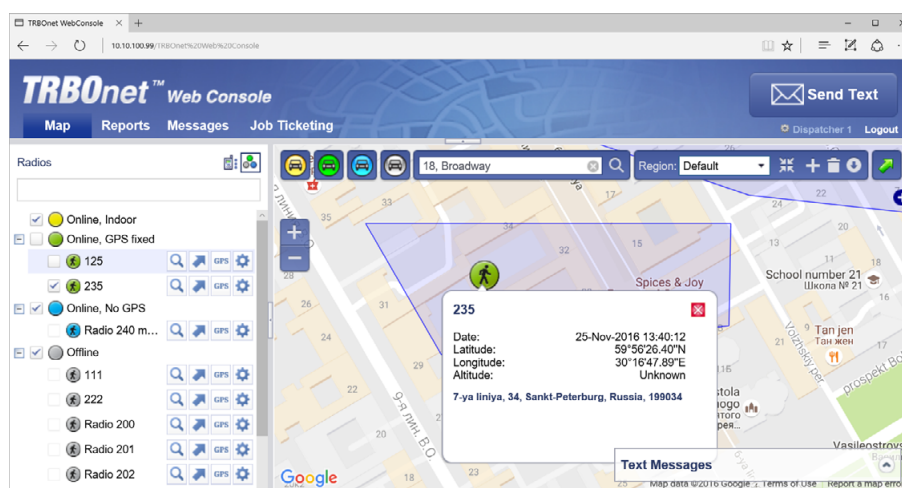
Or:

- Use the mouse wheel to zoom in/out the map.

### 4.3.3 Radio Coordinates and Address






- In the Map pane, click the radio you want to inspect.

As a result, a window will appear displaying the coordinates and address of the inspected radio.



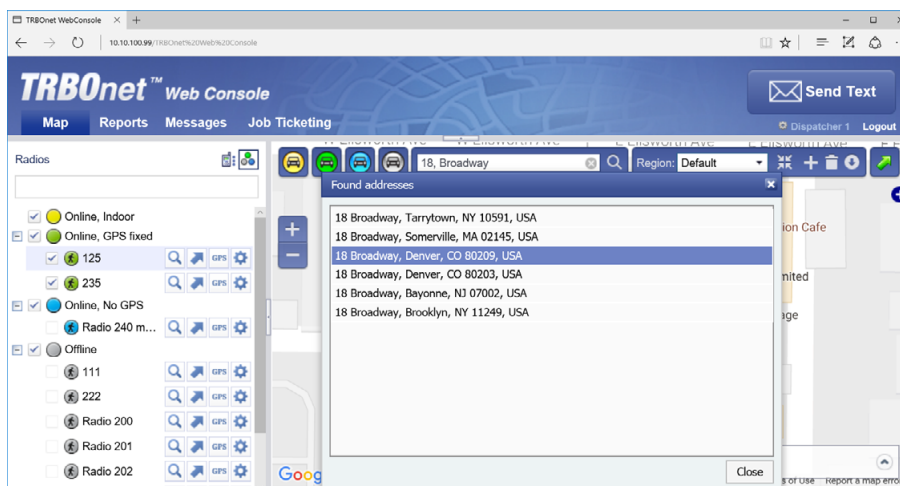
### 4.3.4 Filter Radios

You can filter the display of radios on the map. To do this, use the colored car buttons at the top of the Map pane.

- Click  to remove radios that are online and have a detected beacon position from the map view. Click this button again to bring them back to be displayed.
- Click  to remove radios that are online and have a detected GPS position from the map view. Click this button again to bring them back to be displayed.
- Click  to remove radios that are online and have no detected GPS position from the map view. Click this button again to bring them back to be displayed.
- Click  to remove radios that are offline and have no detected GPS position from the map view. Click this button again to bring them back to be displayed.
- Click  and select the visibility of the radios having **On Duty** and/or **Off Duty** states.

## 4.3.5 Search by address

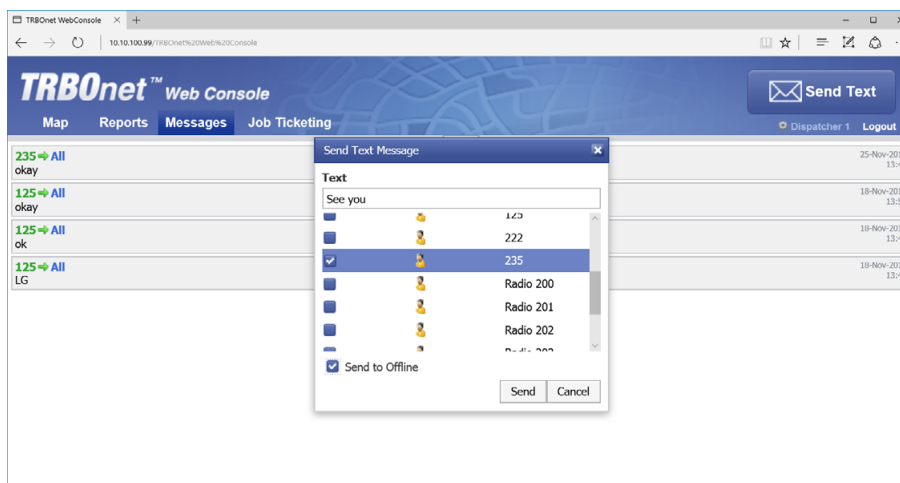
- In the Find Address box, enter the address you want to locate on the map.
- Click the lens button on the right.
- In the Found addresses window, click the address to locate it on the map.



## 4.3.6 Text Messages

With TRBOnet Web Console, you can send text messages to radios/radio groups/dispatchers.

- Click the **Messages** tab at the top of the window.
- Click the **Send Text** button.



In the **Send Text Message** window that appears:

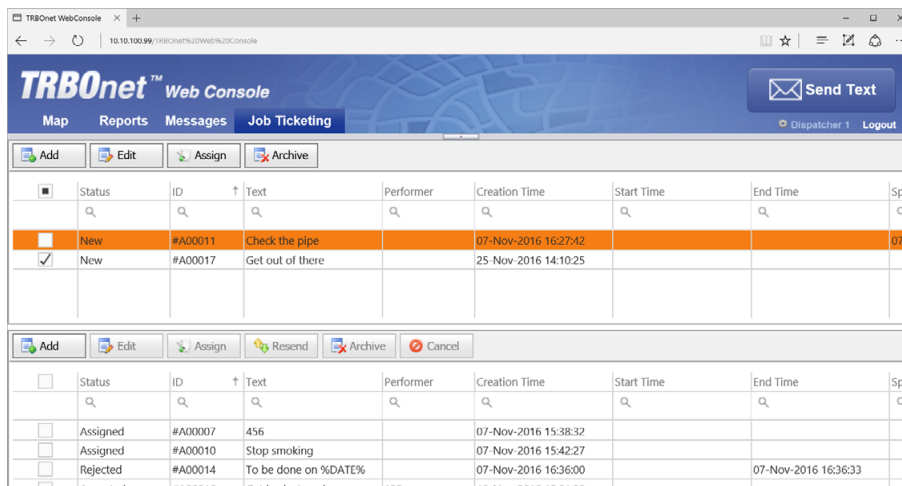
- Enter the text of the message.
- Select the radios/radio groups/dispatchers to send the message to.
- Select the **Send to Offline** option to send the message to offline radios.



## 4.4 Job Ticketing

With TRBOnet Web Console, you can create, assign, and track job tickets through the radio network.

- Click the **Job Ticketing** tab at the top of the window.



Status	ID	Text	Performer	Creation Time	Start Time	End Time	Spe
New	#A00011	Check the pipe		07-Nov-2016 16:27:42			07-
New	#A00017	Get out of there		25-Nov-2016 14:10:25			

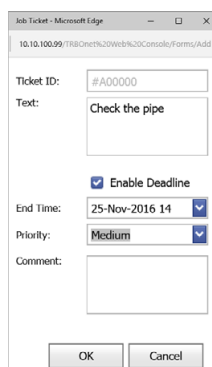
  

Status	ID	Text	Performer	Creation Time	Start Time	End Time	Spe
Assigned	#A00007	456		07-Nov-2016 15:38:32			
Assigned	#A00010	Stop smoking		07-Nov-2016 15:42:27			
Rejected	#A00014	To be done on %DATE%				07-Nov-2016 16:36:00	

In the upper pane, you see the list of created job tickets. In the lower pane, there are assigned job tickets.

### 4.4.1 Add a Job Ticket

- Click the **Add** button.



Job Ticket - Microsoft Edge

10.10.100.99/TRBOnet%20Web%20Console/Forms/Add

Ticket ID: #A00000

Text: Check the pipe

☒ Enable Deadline

End Time: 25-Nov-2016 14

Priority: Medium

Comment:

OK Cancel

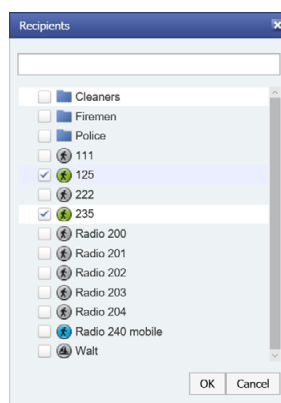
- Ticket ID**  
This value will be set automatically once the ticket has been created.
- Text**  
Enter the text message in this box.
- Enable Deadline**  
Select this option and in the **End Time** box, specify a due date and time for the task.
- Priority**  
From the drop-down list, select the task priority level.

- **Comment**  
Enter a comment for the ticket.
- Click **OK**.

Once you have added a ticket, it will appear in the list of tickets in the upper pane.

## 4.4.2 Assign a Job Ticket

Select the job ticket in the upper pane, and click the **Assign** button.

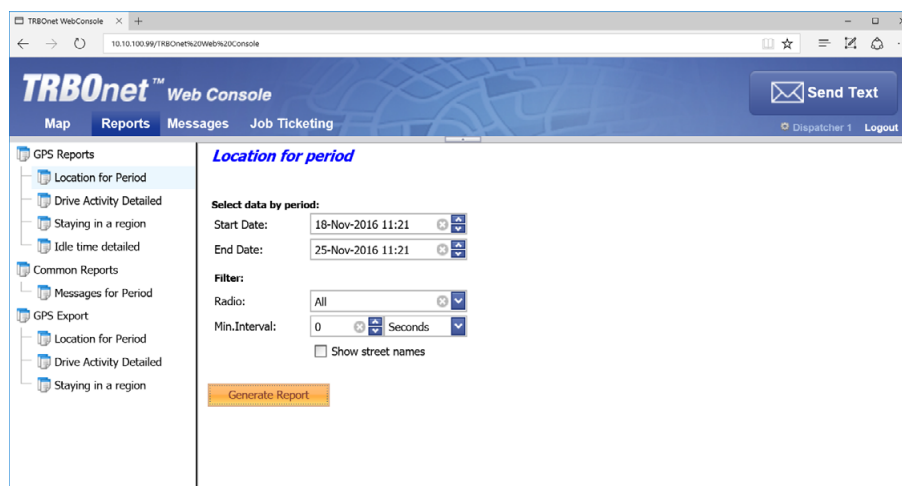


- In the list, select a radio(s), radio or logical group to which to assign the job ticket.
- Click **OK** to assign the task to selected radio(s).

As a result, the selected radio will receive the job ticket. The assigned job ticket will appear in the upper pane.

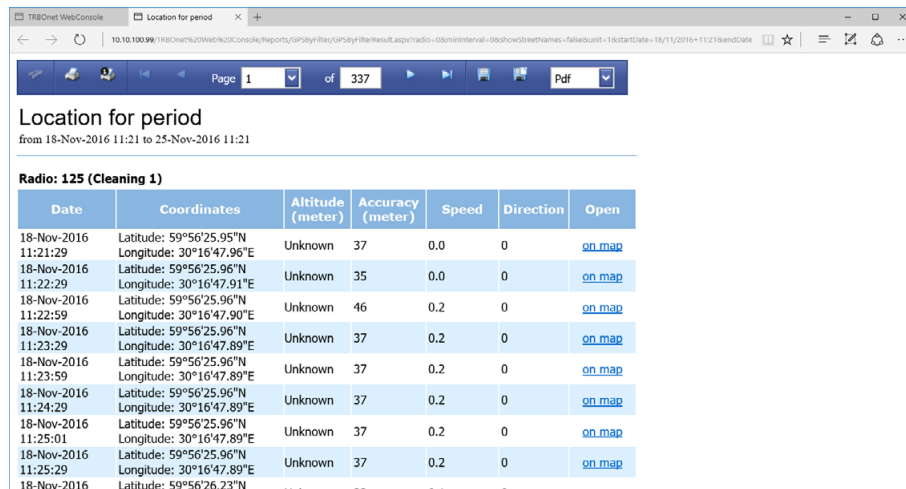
## 4.5 Reports

- Click the **Reports** tab at the top of the window.



- In the right pane, select report parameters and click **Generate Report**.

Once the report is generated, you will see it in a separate tab of your Web browser.



Date	Coordinates	Altitude (meter)	Accuracy (meter)	Speed	Direction	Open
18-Nov-2016 11:21:29	Latitude: 59°56'25.95"N Longitude: 30°16'47.96"E	Unknown	37	0.0	0	<a href="#">on map</a>
18-Nov-2016 11:22:29	Latitude: 59°56'25.96"N Longitude: 30°16'47.91"E	Unknown	35	0.0	0	<a href="#">on map</a>
18-Nov-2016 11:22:59	Latitude: 59°56'25.96"N Longitude: 30°16'47.90"E	Unknown	46	0.2	0	<a href="#">on map</a>
18-Nov-2016 11:23:29	Latitude: 59°56'25.96"N Longitude: 30°16'47.89"E	Unknown	37	0.2	0	<a href="#">on map</a>
18-Nov-2016 11:23:59	Latitude: 59°56'25.96"N Longitude: 30°16'47.89"E	Unknown	37	0.2	0	<a href="#">on map</a>
18-Nov-2016 11:24:29	Latitude: 59°56'25.96"N Longitude: 30°16'47.89"E	Unknown	37	0.2	0	<a href="#">on map</a>
18-Nov-2016 11:25:01	Latitude: 59°56'25.96"N Longitude: 30°16'47.89"E	Unknown	37	0.2	0	<a href="#">on map</a>
18-Nov-2016 11:25:29	Latitude: 59°56'25.96"N Longitude: 30°16'47.89"E	Unknown	37	0.2	0	<a href="#">on map</a>
18-Nov-2016	Latitude: 59°56'26.23"N					

You can print the report, save it as a file, and so forth.

## 4.6 Alarms

When an alarm is received from a radio, the radio icon will turn red, and a corresponding Information window will pop up displaying the radio's name, coordinates, and speed.

